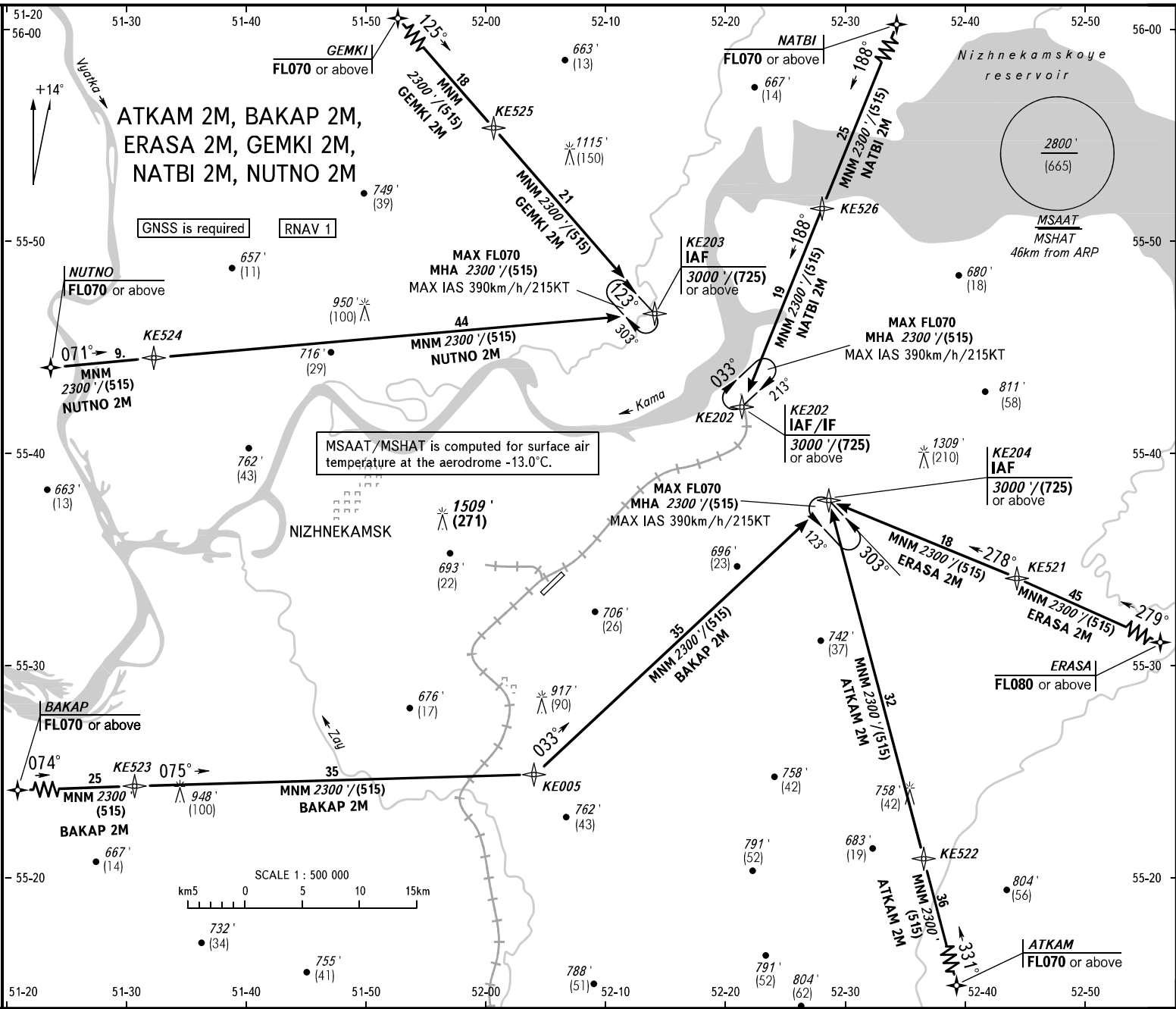


STANDARD ARRIVAL CHART  
INSTRUMENT (STAR) - ICAO

NIZHNEKAMSK, RUSSIA  
BEGISHEVO  
RNAV RWY 21

TRANSITION  
LEVEL: 1



ATKAM 2M, BAKAP 2M,  
ERASA 2M, GEMKI 2M,  
NATBI 2M, NUTNO 2M

RADAR  
START 121.200  
KAZAN APPROACH 128.625

127.900  
121.200  
128.625

BEARINGS AND TRACKS ARE MAGNETIC  
ALTITUDES IN FEET  
HEIGHTS IN METRES  
ELEVATIONS IN FEET AND METRES  
DISTANCES IN KILOMETRES

All set: -QN(H)(QFE on req.)  
-hPa(mm on req.)

TRANSITION LEVEL:

- FL040 when QNH is 1013 hPa (760mm mercury column) or above;
- FL050 when QNH is 977 hPa (733mm mercury column) or above, but less than 1013 hPa (760mm mercury column);
- FL060 when QNH is less than 977 hPa (733mm mercury column).

SCALE 1 : 500 000  
km 5 0 5 10 15km