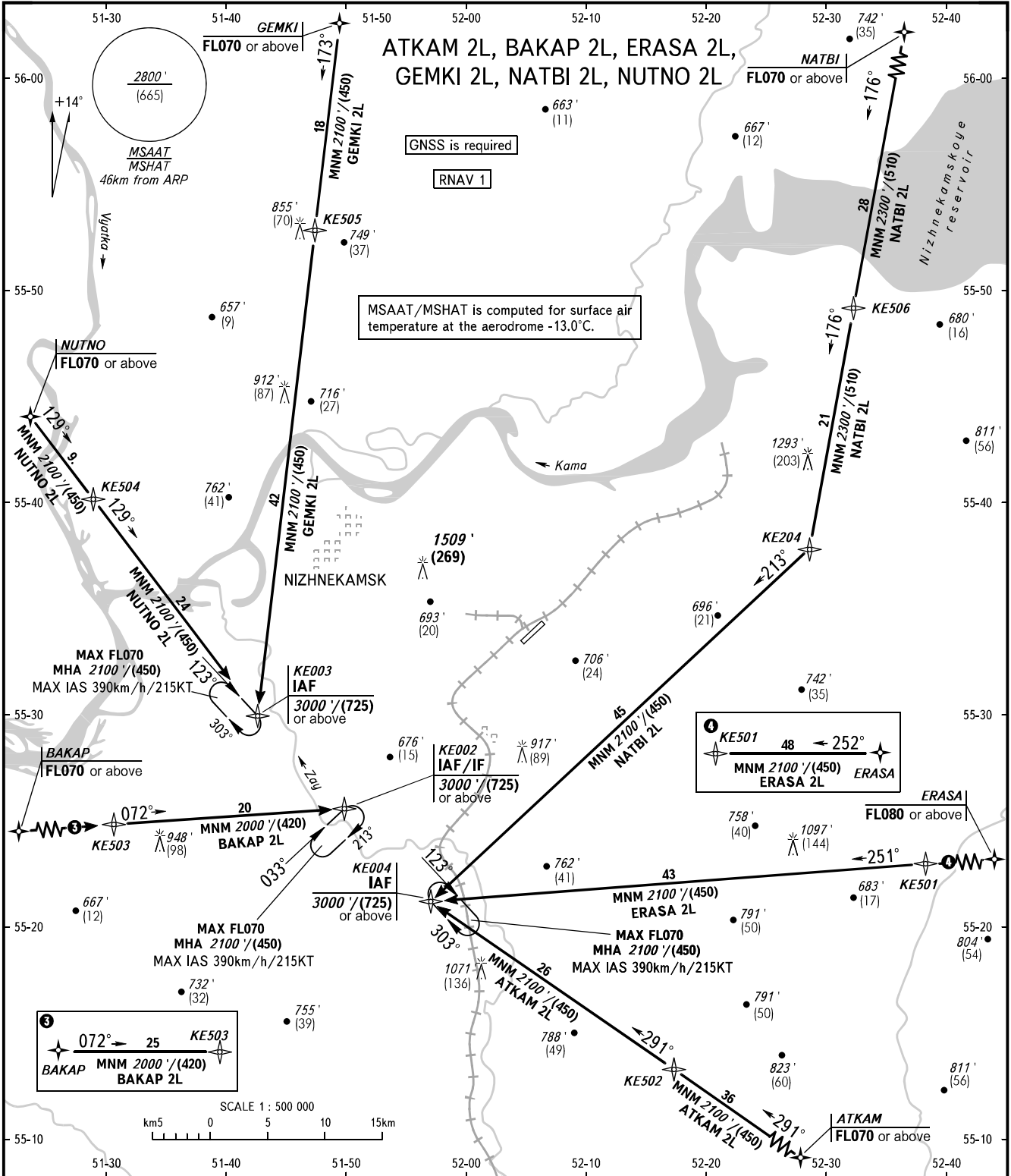


STANDARD ARRIVAL CHART
INSTRUMENT (STAR) - ICAO

NIZHNEKAMSK, RUSSIA
BEGISHEVO
RNAV RWY 03

TRANSITION
LEVEL: 1



MSAAT/MSHAT is computed for surface air temperature at the aerodrome -13.0°C.

GNSSE is required

RNAV 1

KE501
MNM 2100'/(450)
ERASA 2L

072° → 25 KE503
BAKAP MNM 2000'/(420)
BAKAP 2L

RADAR 127.900
START 121.200
KAZAN APPROACH 128.625

- 1 TRANSITION LEVEL:
- FL040 when QNH is 1013 hPa (760mm mercury column) or above;
 - FL050 when QNH is 977 hPa (733mm mercury column) or above, but less than 1013 hPa (760mm mercury column);
 - FL060 when QNH is less than 977 hPa (733mm mercury column).

BEARINGS AND TRACKS ARE MAGNETIC
ALTITUDES IN FEET
HEIGHTS IN METRES
ELEVATIONS IN FEET AND METRES
DISTANCES IN KILOMETRES

Alt set: -QNH(QFE on req);
-hPa(mm on req).