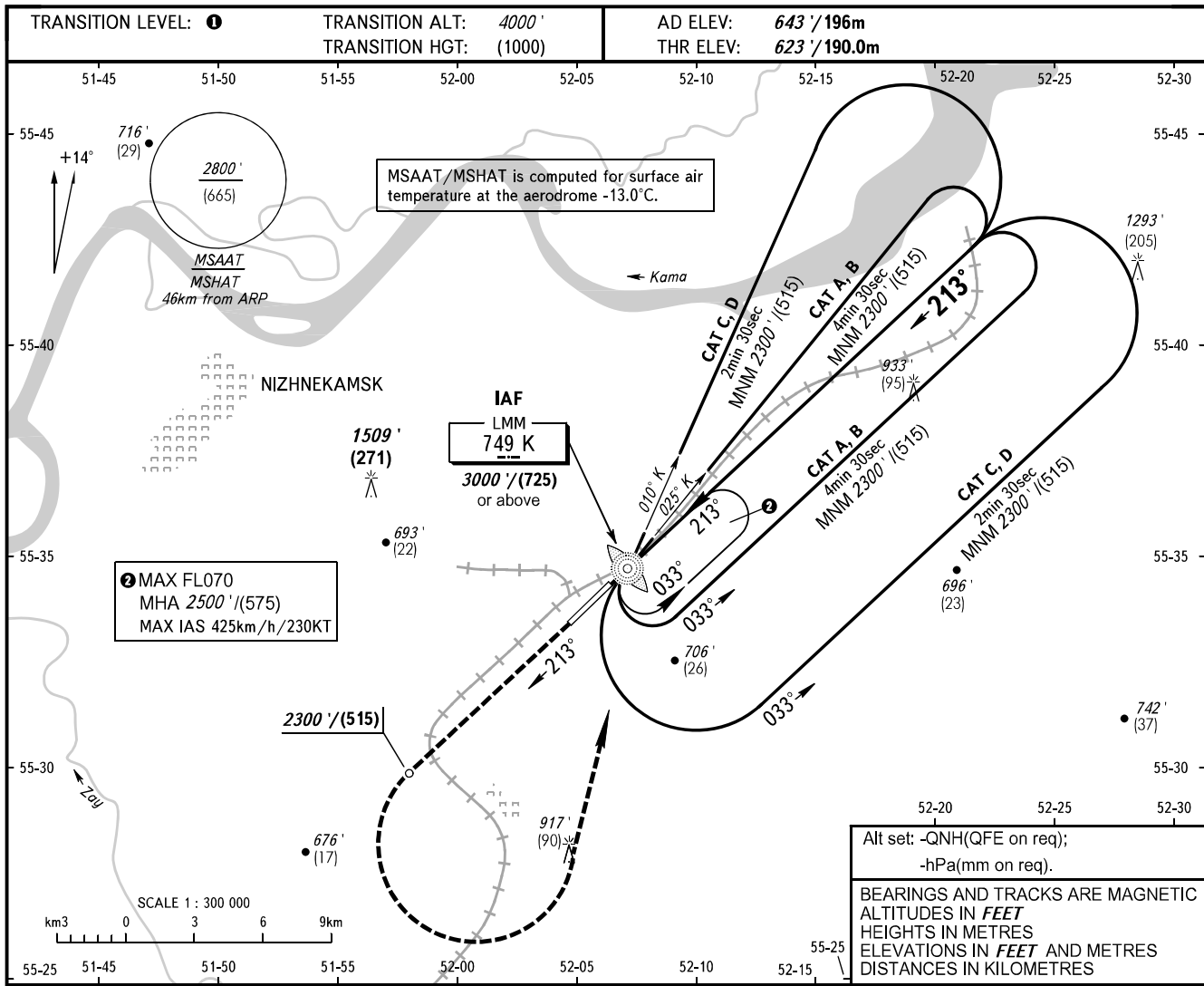


**INSTRUMENT
APPROACH
CHART - ICAO**

RADAR	127.900
TOWER	127.900
START	121.200

NIZHNEKAMSK, RUSSIA
BEGISHEVO
NDB Y RWY 21

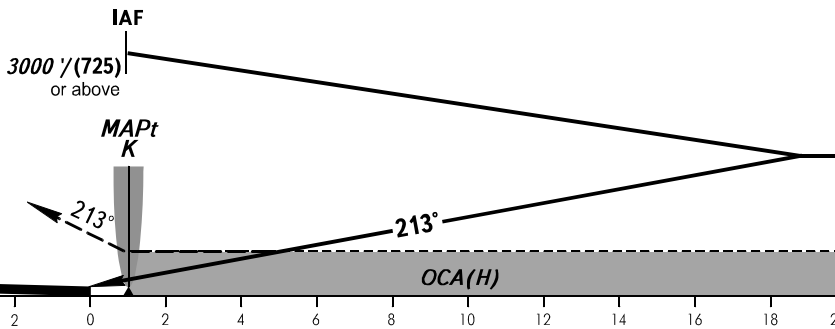


Alt set: -QNH(QFE on req);
-hPa(mm on req).

BEARINGS AND TRACKS ARE MAGNETIC
ALTITUDES IN FEET
HEIGHTS IN METRES
ELEVATIONS IN FEET AND METRES
DISTANCES IN KILOMETRES

MISSED APPROACH

Climb straight ahead to 2300'/(515), then turn LEFT to IAF LMM K climbing to 3000'/(725) or above, then join holding area or according to chart.



OCA(H)	A	B	C	D
Straight-in Approach	1380' (760') (230)	1380' (760') (230)	1380' (760') (230)	1380' (760') (230)
Circling	1380' (760') (230)	1380' (760') (230)	1380' (760') (230)	1380' (760') (230)

1 TRANSITION LEVEL:
- FL040 when QNH is 1013 hPa (760mm mercury column) or above;
- FL050 when QNH is 977 hPa (733mm mercury column) or above, but less than 1013 hPa (760mm mercury column);
- FL060 when QNH is less than 977 hPa (733mm mercury column).

MAPt at LMM K.
Visual manoeuvring in sector 228°- 018° is PROHIBITED.