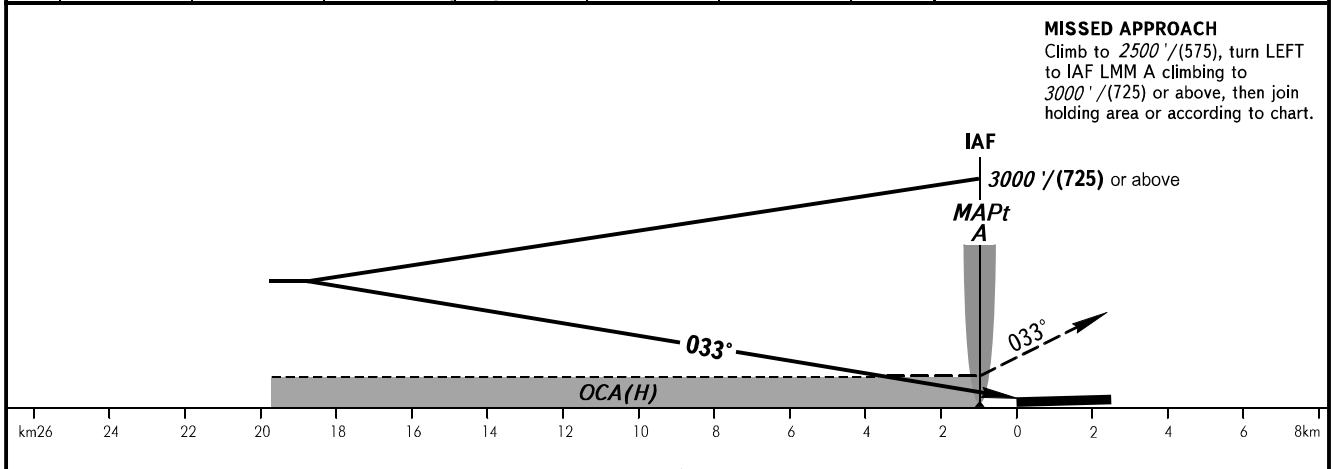
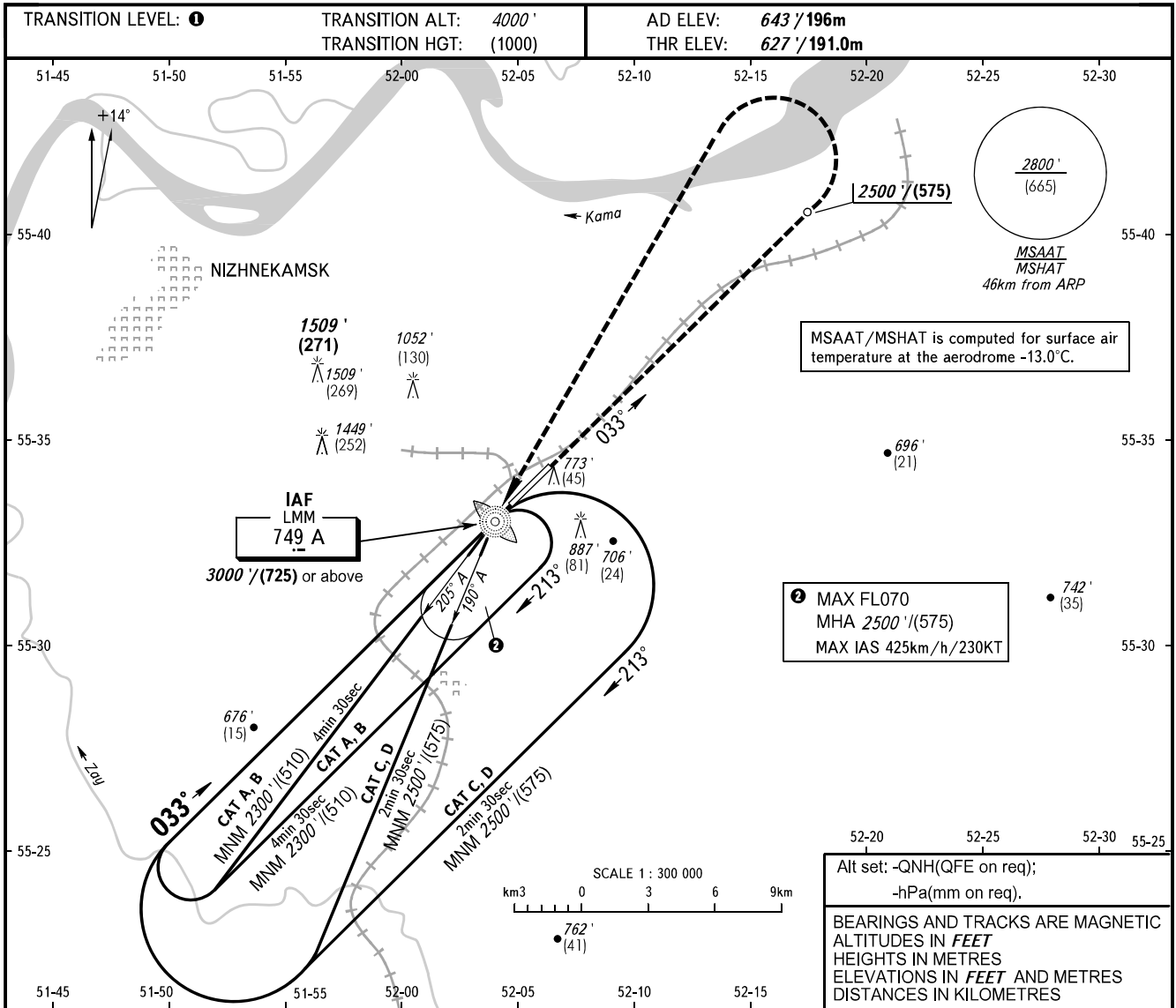


**INSTRUMENT  
APPROACH  
CHART - ICAO**

RADAR	127.900
TOWER	127.900
START	121.200

**NIZHNEKAMSK, RUSSIA**  
BEGISHEVO  
NDB Y RWY 03



OCA(H)		A	B	C	D
Straight-in Approach		1040' (410') (125)	1040' (410') (125)	1040' (410') (125)	1040' (410') (125)
Circling		1070' (430') (130)	1190' (540') (165)	1290' (640') (195)	1340' (690') (210)

**1** TRANSITION LEVEL:  
- FL040 when QNH is 1013 hPa (760mm mercury column) or above;  
- FL050 when QNH is 977 hPa (733mm mercury column) or above, but less than 1013 hPa (760mm mercury column);  
- FL060 when QNH is less than 977 hPa (733mm mercury column).

1. MAPt at LMM A.  
2. Visual manoeuvring in sector 228° - 018° is PROHIBITED.

CHANGE: NIL