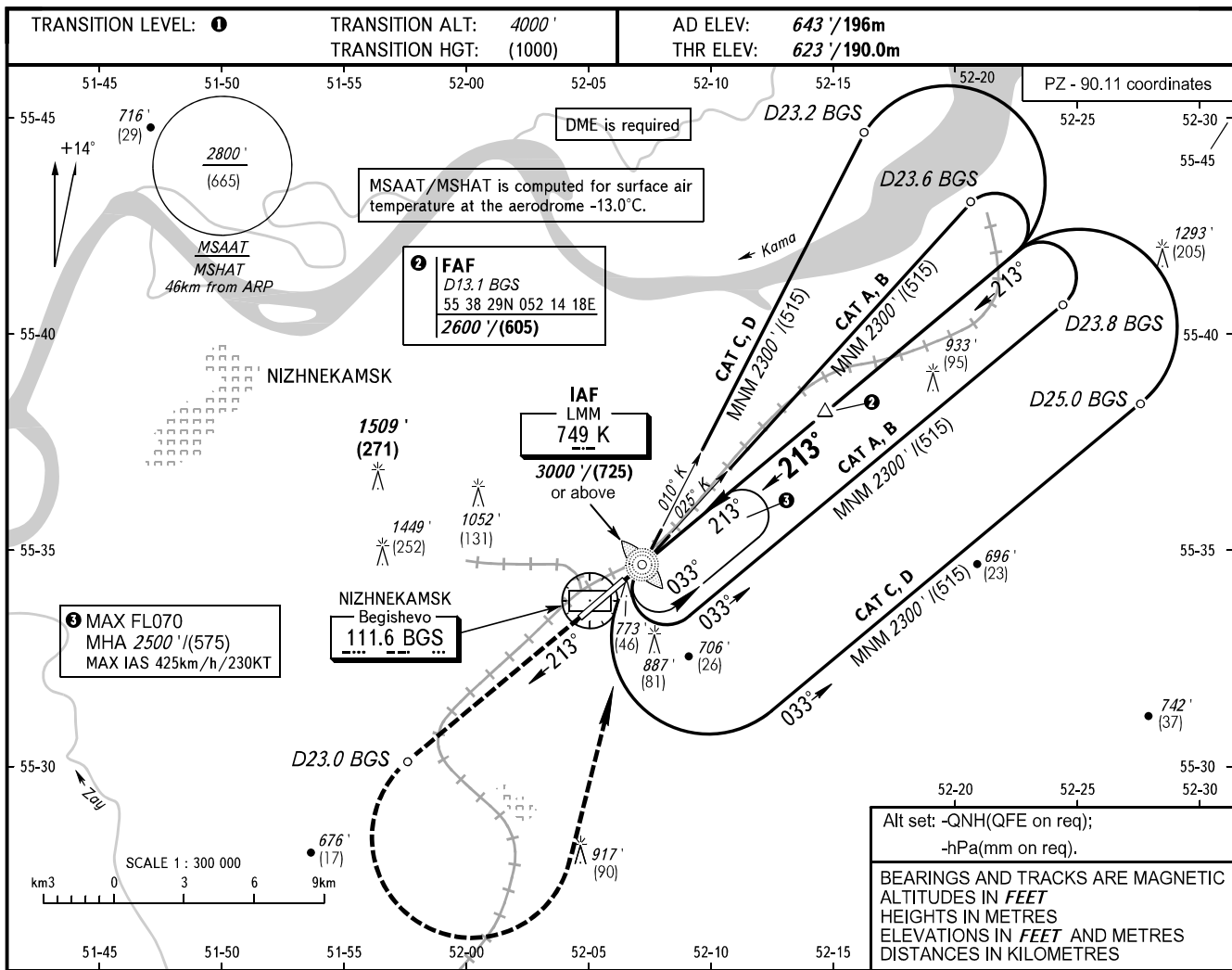


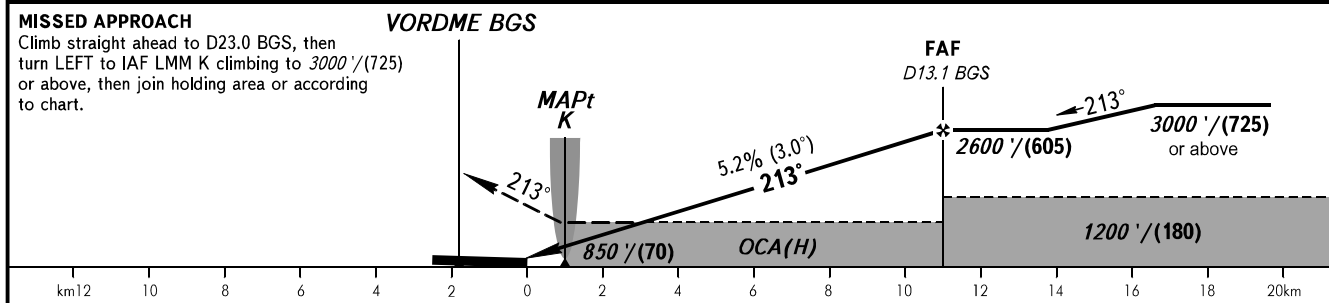
**INSTRUMENT  
APPROACH  
CHART - ICAO**

RADAR	127.900
TOWER	127.900
START	121.200

**NIZHNEKAMSK, RUSSIA**  
BEGISHEVO  
NDB Z RWY 21



DIST to THR RWY 21	2.0	4.0	6.0	8.0	10.0
DME BGS	3.8	5.8	7.8	9.8	11.8
ALTITUDE/HEIGHT	1020' / (120)	1360' / (225)	1700' / (330)	2040' / (435)	2380' / (535)



OCA(H)		A	B	C	D	1 TRANSITION LEVEL:										
Straight-in Approach		890' (260') (80)	890' (260') (80)	890' (260') (85)	910' (290') (90)	- FL040 when QNH is 1013 hPa (760mm mercury column) or above; - FL050 when QNH is 977 hPa (733mm mercury column) or above, but less than 1013 hPa (760mm mercury column); - FL060 when QNH is less than 977 hPa (733mm mercury column).										
						MAPt at LMM K. Timing not authorized for defining MAPt. Visual manoeuvring in sector 228° - 018° is PROHIBITED.										
Circling		1070' (430') (130)	1190' (540') (165)	1290' (640') (195)	1340' (690') (210)											
GROUND SPEED	km/h		150	180	210	240	270	300	330	360	390	420	450			
	kt		81	97	113	130	146	162	178	194	211	227	243			
RATE OF DESCENT	m/s		2.2	2.6	3.0	3.5	3.9	4.3	4.8	5.2	5.6	6.1	6.5			
	ft/min		427	512	597	682	768	853	938	1024	1109	1194	1280			