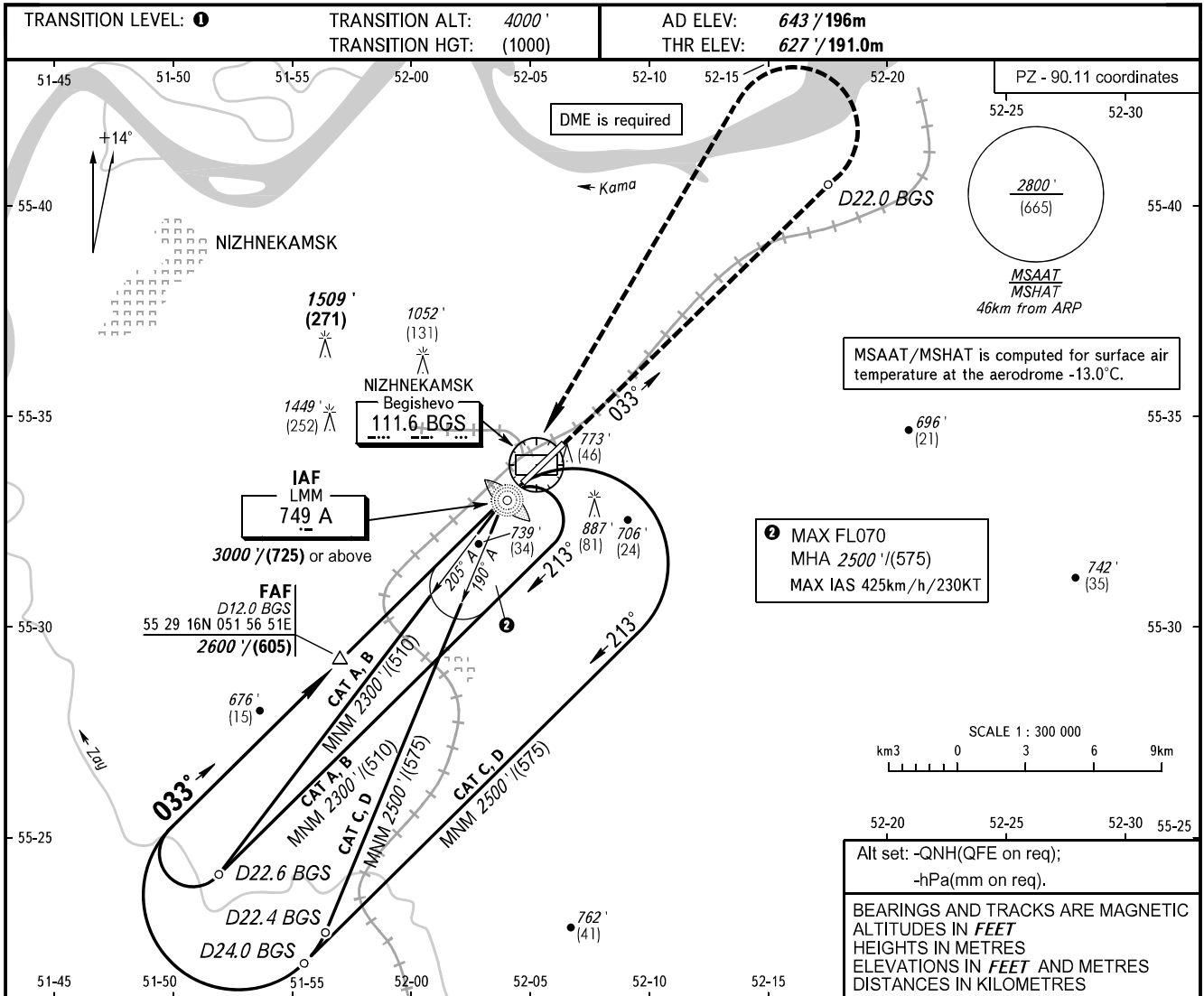


**INSTRUMENT  
APPROACH  
CHART - ICAO**

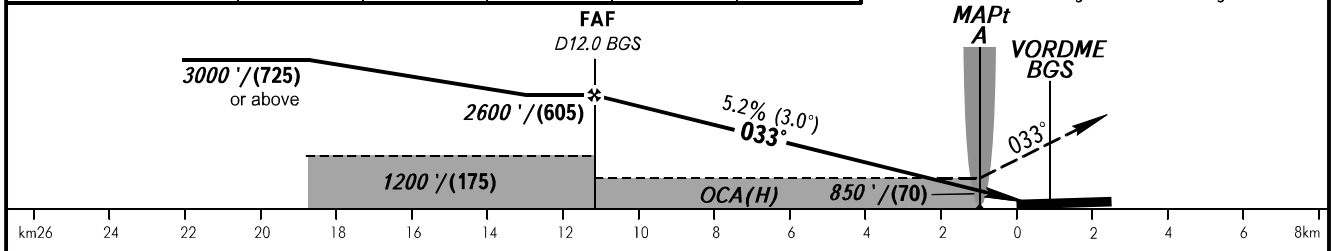
RADAR	127.900
TOWER	127.900
START	121.200

**NIZHNEKAMSK, RUSSIA**  
BEGISHEVO  
NDB Z RWY 03



DIST to THR RWY 03	10.0	8.0	6.0	4.0	2.0
DME BGS	10.8	8.8	6.8	4.8	2.8
ALTITUDE/HEIGHT	2390' / (535)	2050' / (435)	1710' / (330)	1370' / (225)	1030' / (120)

**MISSED APPROACH**  
Climb straight ahead to D22.0 BGS, then turn LEFT to LMM A climbing to 3000' / (725) or above, then join holding area or according to chart.



OCA(H)		A	B	C	D							
Straight-in Approach		990' (360') (110)	990' (360') (110)	990' (360') (110)	990' (360') (110)							
	Circling	1070' (430') (130)	1190' (540') (165)	1290' (640') (195)	1340' (690') (210)							
GROUND SPEED	km/h	150	180	210	240	270	300	330	360	390	420	450
	kt	81	97	113	130	146	162	178	194	211	227	243
RATE OF DESCENT	m/s	2.2	2.6	3.0	3.5	3.9	4.3	4.8	5.2	5.6	6.1	6.5
	ft/min	427	512	597	682	768	853	938	1024	1109	1194	1280

**1** TRANSITION LEVEL:  
- FL040 when QNH is 1013 hPa (760mm mercury column) or above;  
- FL050 when QNH is 977 hPa (733mm mercury column) or above, but less than 1013 hPa (760mm mercury column);  
- FL060 when QNH is less than 977 hPa (733mm mercury column).

1. MAPt at LMM A. Timing not authorized for defining MAPt.  
2. Visual manoeuvring in sector 228° - 018° is PROHIBITED.

CHANGE: NIL