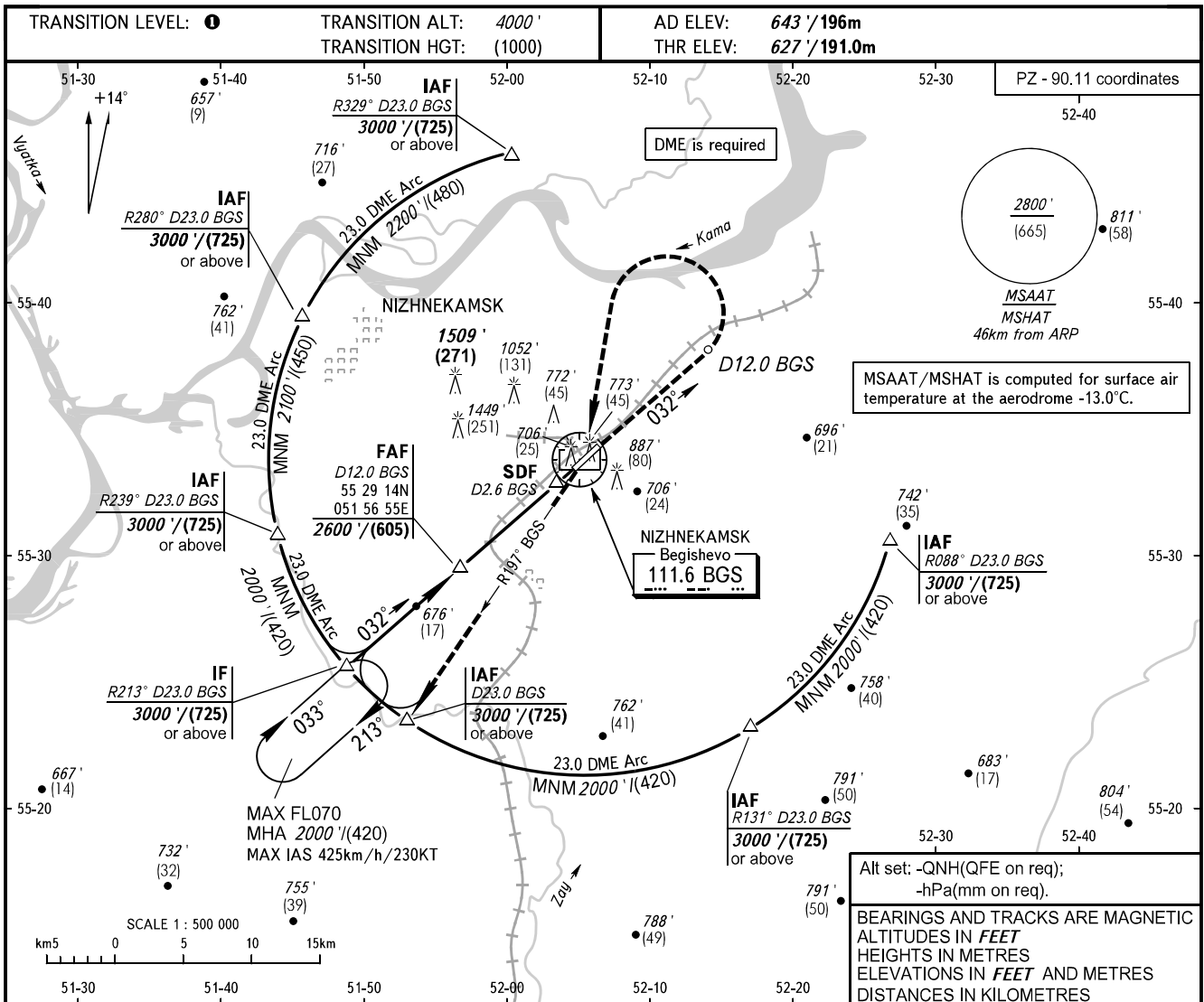


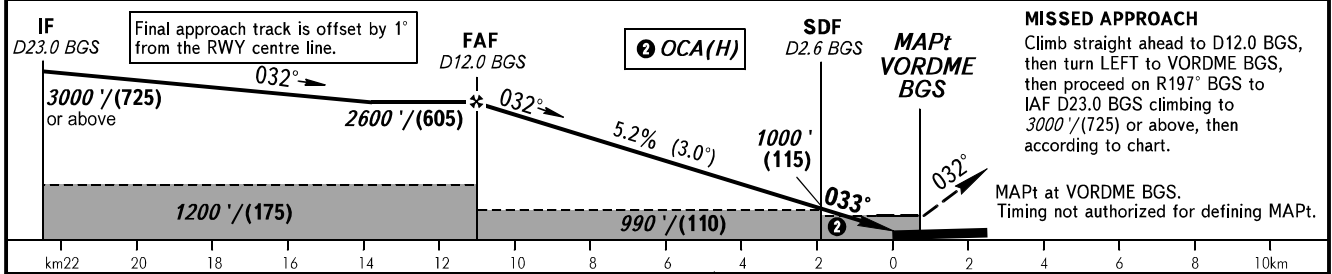
**INSTRUMENT  
APPROACH  
CHART - ICAO**

**NIZHNEKAMSK, RUSSIA  
BEGISHEVO  
VOR RWY 03**

RADAR	127.900
TOWER	127.900
START	121.200



DIST to THR RWY 03	10.0	8.0	6.0	4.0	2.0
DME BGS	10.8	8.8	6.8	4.8	2.8
ALTITUDE/HEIGHT	2390'/(535)	2050'/(435)	1710'/(330)	1370'/(225)	1030'/(120)



OCA(H)		A	B	C	D	<b>TRANSITION LEVEL:</b> - FL040 when QNH is 1013 hPa (760mm mercury column) or above; - FL050 when QNH is 977 hPa (733mm mercury column) or above, but less than 1013 hPa (760mm mercury column); - FL060 when QNH is less than 977 hPa (733mm mercury column). Visual manoeuvring in sector 228° - 018° is PROHIBITED.									
Straight-in Approach	Altitude	960' (330') (100)	960' (330') (100)	960' (330') (100)	960' (330') (100)										
	Rate of Descent														
Circling	Altitude	1070' (430') (130)	1190' (540') (165)	1290' (640') (195)	1340' (690') (210)										
	Rate of Descent														
GROUND SPEED	km/h		150	180	210	240	270	300	330	360	390	420	450		
	kt		81	97	113	130	146	162	178	194	211	227	243		
RATE OF DESCENT	m/s		2.2	2.6	3.0	3.5	3.9	4.3	4.8	5.2	5.6	6.1	6.5		
	ft/min		427	512	597	682	768	853	938	1024	1109	1194	1280		

CHANGE: R239° BGS