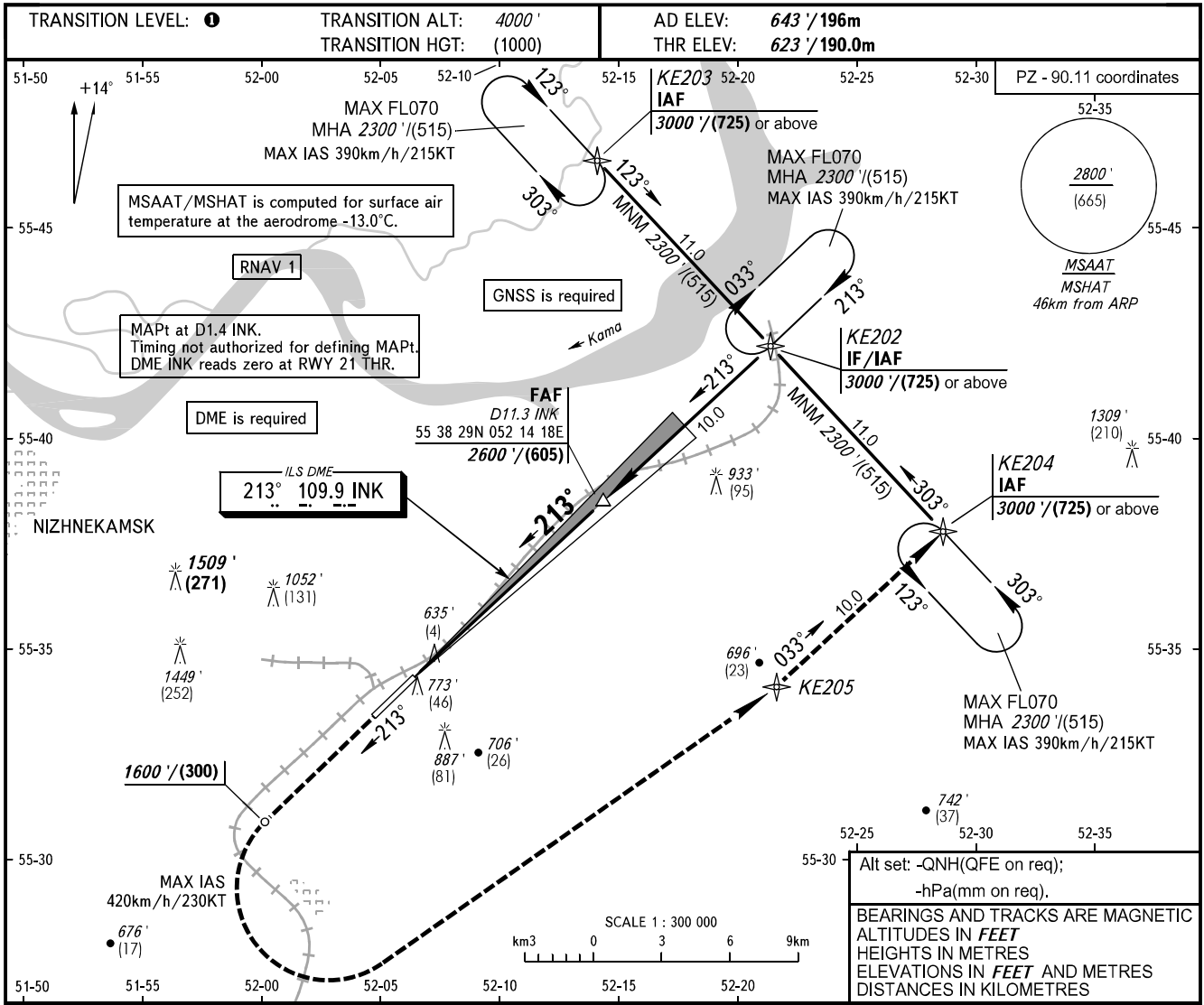


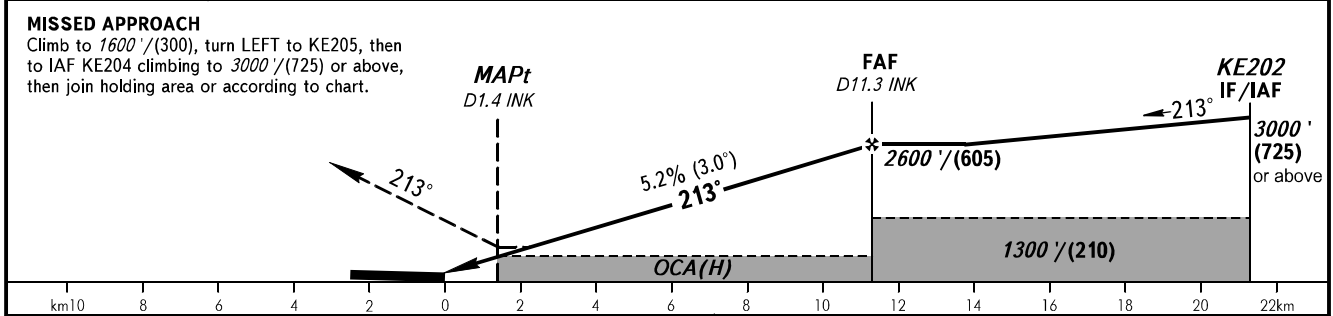
**INSTRUMENT
APPROACH
CHART - ICAO**

**NIZHNEKAMSK, RUSSIA
BEGISHEVO
LOC Z RWY 21**

RADAR	127.900
TOWER	127.900
START	121.200



DIST to THR RWY 21	2.0	4.0	6.0	8.0	10.0
ALTITUDE/HEIGHT	1020' / (120)	1360' / (225)	1700' / (330)	2040' / (435)	2380' / (535)



OCA(H)	A				B				C				D				
	Straight-in		Approach		Straight-in		Approach		Straight-in		Approach		Straight-in		Approach		
910' (290') (90)	910' (290') (90)	910' (290') (90)	910' (290') (90)	910' (290') (90)	910' (290') (90)	910' (290') (90)	910' (290') (90)	910' (290') (90)	910' (290') (90)	910' (290') (90)	910' (290') (90)	910' (290') (90)	910' (290') (90)	910' (290') (90)	910' (290') (90)	910' (290') (90)	
1070' (430') (130)	1190' (540') (165)	1290' (640') (195)	1340' (690') (210)	1070' (430') (130)	1190' (540') (165)	1290' (640') (195)	1340' (690') (210)	1070' (430') (130)	1190' (540') (165)	1290' (640') (195)	1340' (690') (210)	1070' (430') (130)	1190' (540') (165)	1290' (640') (195)	1340' (690') (210)	1070' (430') (130)	
GROUND SPEED	km/h	150	180	210	240	270	300	330	360	390	420	450	150	180	210	240	270
	kt	81	97	113	130	146	162	178	194	211	227	243	81	97	113	130	146
RATE OF DESCENT	m/s	2.2	2.6	3.0	3.5	3.9	4.3	4.8	5.2	5.6	6.1	6.5	2.2	2.6	3.0	3.5	3.9
	ft/min	427	512	597	682	768	853	938	1024	1109	1194	1280	427	512	597	682	768

TRANSITION LEVEL:
- FL040 when QNH is 1013 hPa (760mm mercury column) or above;
- FL050 when QNH is 977 hPa (733mm mercury column) or above, but less than 1013 hPa (760mm mercury column);
- FL060 when QNH is less than 977 hPa (733mm mercury column).
Visual manoeuvring in sector 228° - 018° is PROHIBITED.

CHANGE: NIL