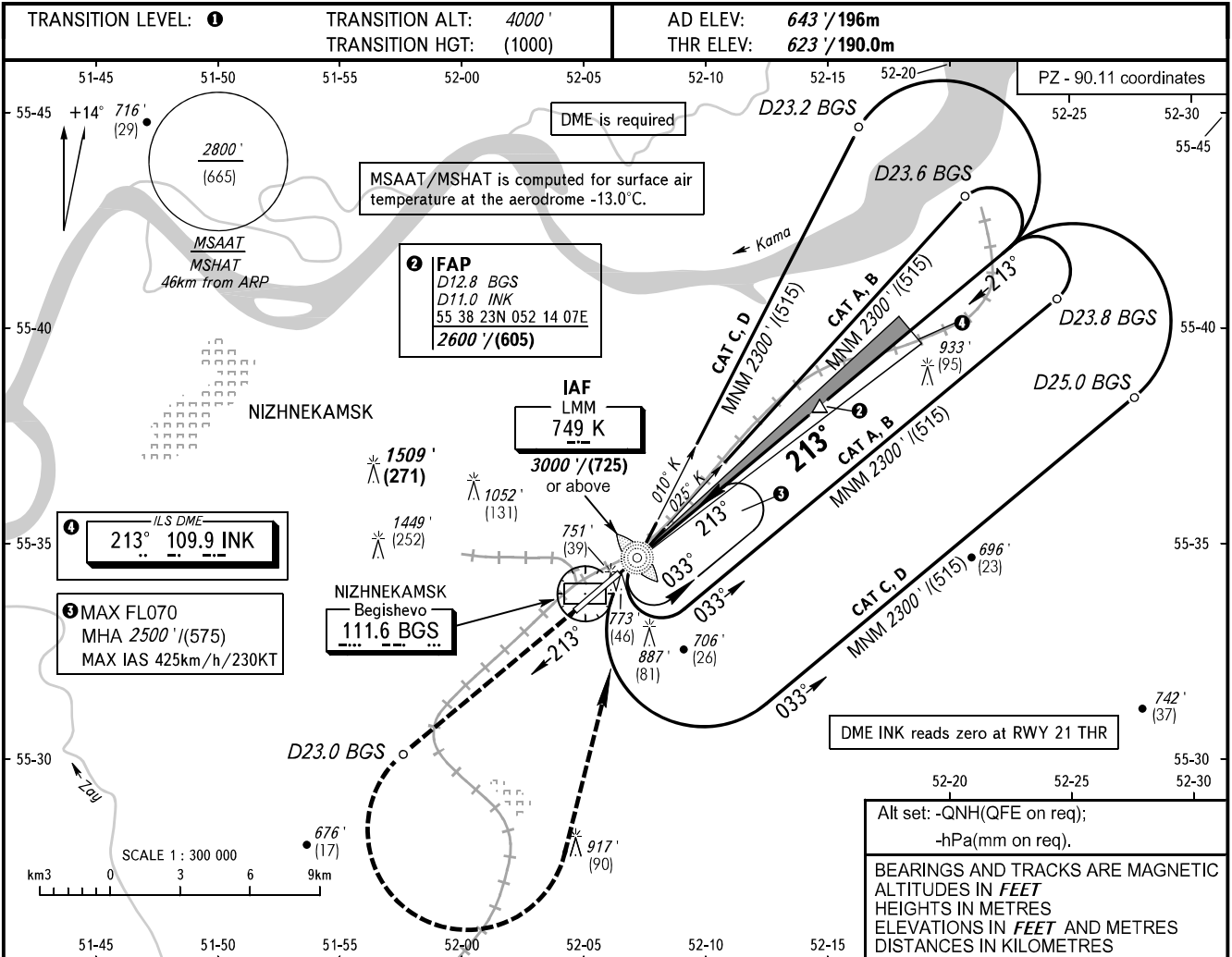


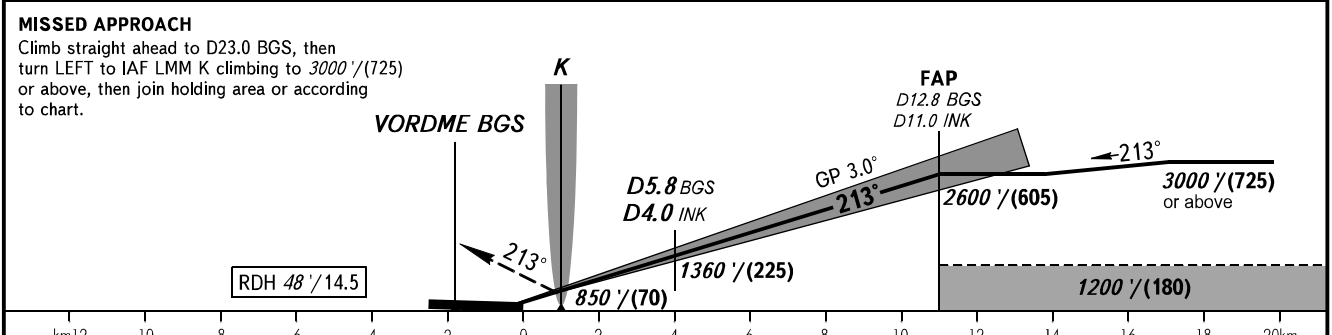
**INSTRUMENT
APPROACH
CHART - ICAO**

RADAR 127.900
TOWER 127.900
START 121.200

**NIZHNEKAMSK, RUSSIA
BEGISHEVO
ILS X CAT I RWY 21**



| | | | | | |
|--------------------|---------------|---------------|---------------|---------------|---------------|
| DIST to THR RWY 21 | 2.0 | 4.0 | 6.0 | 8.0 | 10.0 |
| DME BGS | 3.8 | 5.8 | 7.8 | 9.8 | 11.8 |
| ALTITUDE/HEIGHT | 1020' / (120) | 1360' / (225) | 1700' / (330) | 2040' / (435) | 2380' / (535) |



| | | | | | | | | | | | | |
|----------------------|--------|--------------------|--------------------|--------------------|--------------------|---|-----|-----|------|------|------|------|
| OCA(H) | | A | B | C | D | TRANSITION LEVEL: - FL040 when QNH is 1013 hPa (760mm mercury column) or above; - FL050 when QNH is 977 hPa (733mm mercury column) or above, but less than 1013 hPa (760mm mercury column); - FL060 when QNH is less than 977 hPa (733mm mercury column). Visual manoeuvring in sector 228°- 018° is PROHIBITED. | | | | | | |
| Straight-in Approach | CAT I | 771' (148') (45) | 781' (158') (48) | 794' (171') (52) | 807' (184') (56) | | | | | | | |
| Circling | | 1070' (430') (130) | 1190' (540') (165) | 1290' (640') (195) | 1340' (690') (210) | | | | | | | |
| GROUND SPEED | km/h | 150 | 180 | 210 | 240 | 270 | 300 | 330 | 360 | 390 | 420 | 450 |
| | kt | 81 | 97 | 113 | 130 | 146 | 162 | 178 | 194 | 211 | 227 | 243 |
| RATE OF DESCENT | m/s | 2.2 | 2.6 | 3.0 | 3.5 | 3.9 | 4.3 | 4.8 | 5.2 | 5.6 | 6.1 | 6.5 |
| | ft/min | 427 | 512 | 597 | 682 | 768 | 853 | 938 | 1024 | 1109 | 1194 | 1280 |