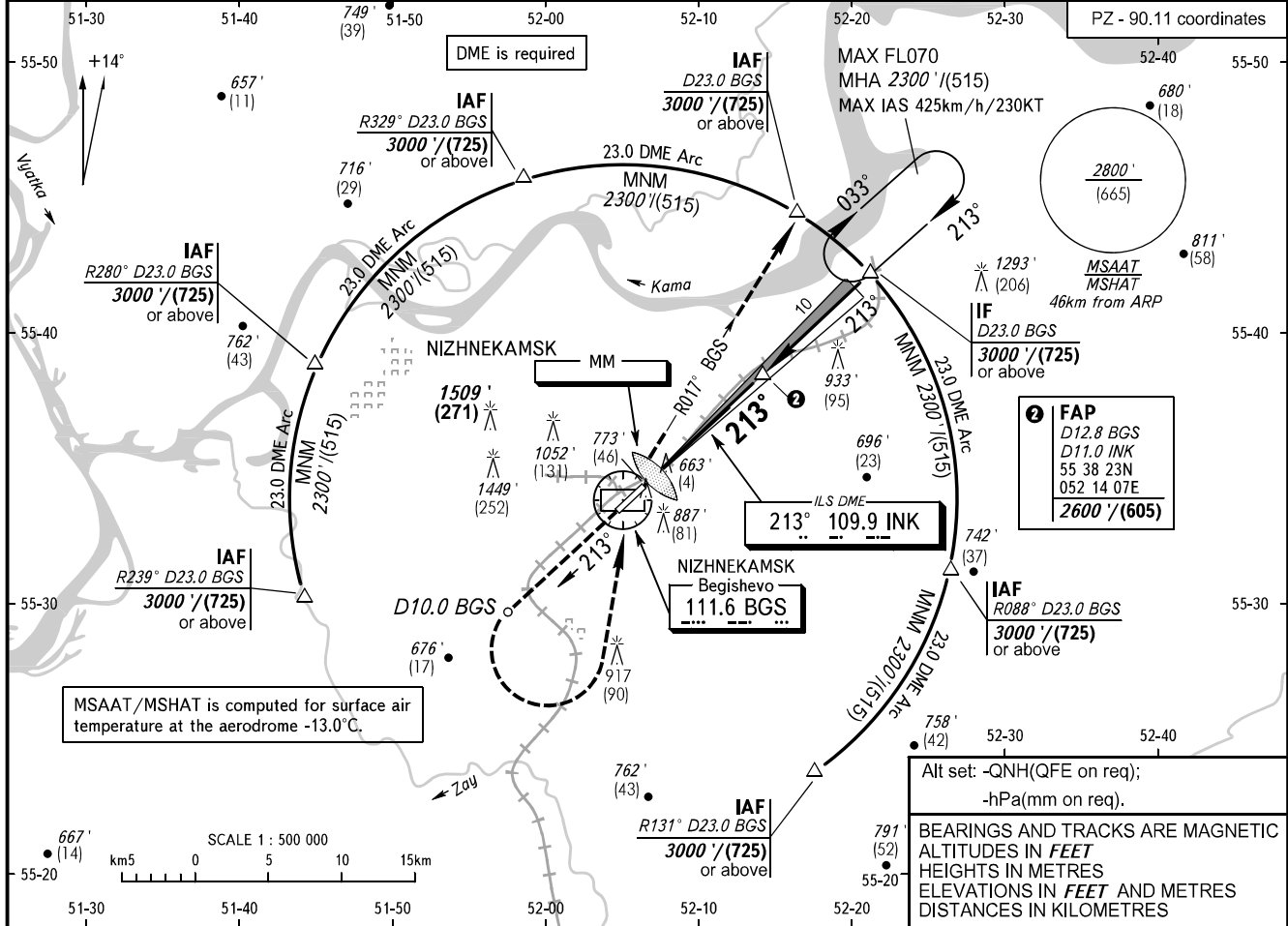


**INSTRUMENT
APPROACH
CHART - ICAO**

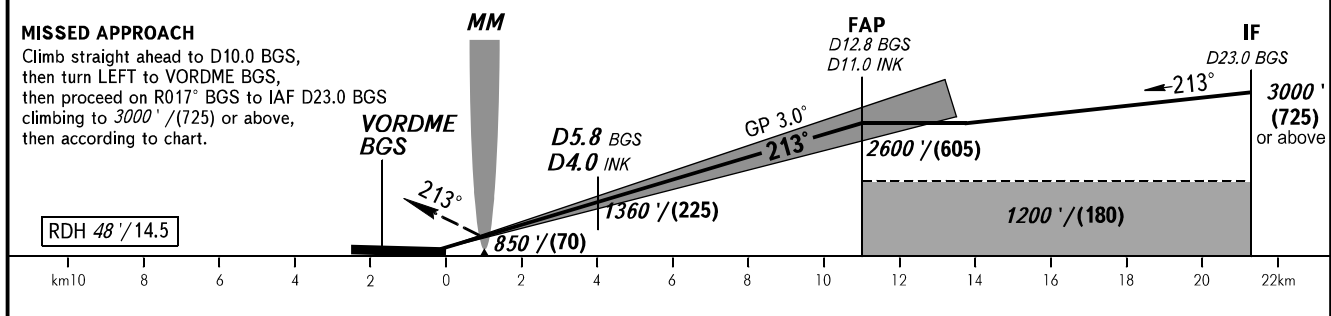
RADAR	127.900
TOWER	127.900
START	121.200

NIZHNEKAMSK, RUSSIA
BEGISHEVO
ILS Y CAT I RWY 21

TRANSITION LEVEL: ①	TRANSITION ALT: 4000'	AD ELEV: 643' / 196m
	TRANSITION HGT: (1000)	THR ELEV: 623' / 190.0m



DIST TO THR RWY 21	2.0	4.0	6.0	8.0	10.0
DME BGS	3.8	5.8	7.8	9.8	11.8
ALTITUDE/HEIGHT	1020' / (120)	1360' / (225)	1700' / (330)	2040' / (435)	2380' / (535)



OCA(H)		A	B	C	D										
Straight-in	CAT I	771' (148') (45)	781' (158') (48)	794' (171') (52)	807' (184') (56)										
	Approach														
Circling		1070' (430') (130)	1190' (540') (165)	1290' (640') (195)	1340' (690') (210)										
GROUND SPEED	km/h		150	180	210	240	270	300	330	360	390	420	450		
	kt		81	97	113	130	146	162	178	194	211	227	243		
RATE OF DESCENT	m/s		2.2	2.6	3.0	3.5	3.9	4.3	4.8	5.2	5.6	6.1	6.5		
	ft/min		427	512	597	682	768	853	938	1024	1109	1194	1280		

① TRANSITION LEVEL:
 - FLO40 when QNH is 1013 hPa (760mm mercury column) or above;
 - FLO50 when QNH is 977 hPa (733mm mercury column) or above, but less than 1013 hPa (760mm mercury column);
 - FLO60 when QNH is less than 977 hPa (733mm mercury column).
WARNING:
 1. Zero range of DME INK is indicated at RWY 21 THR.
 2. Visual manoeuvring in sector 228° - 018° is PROHIBITED.