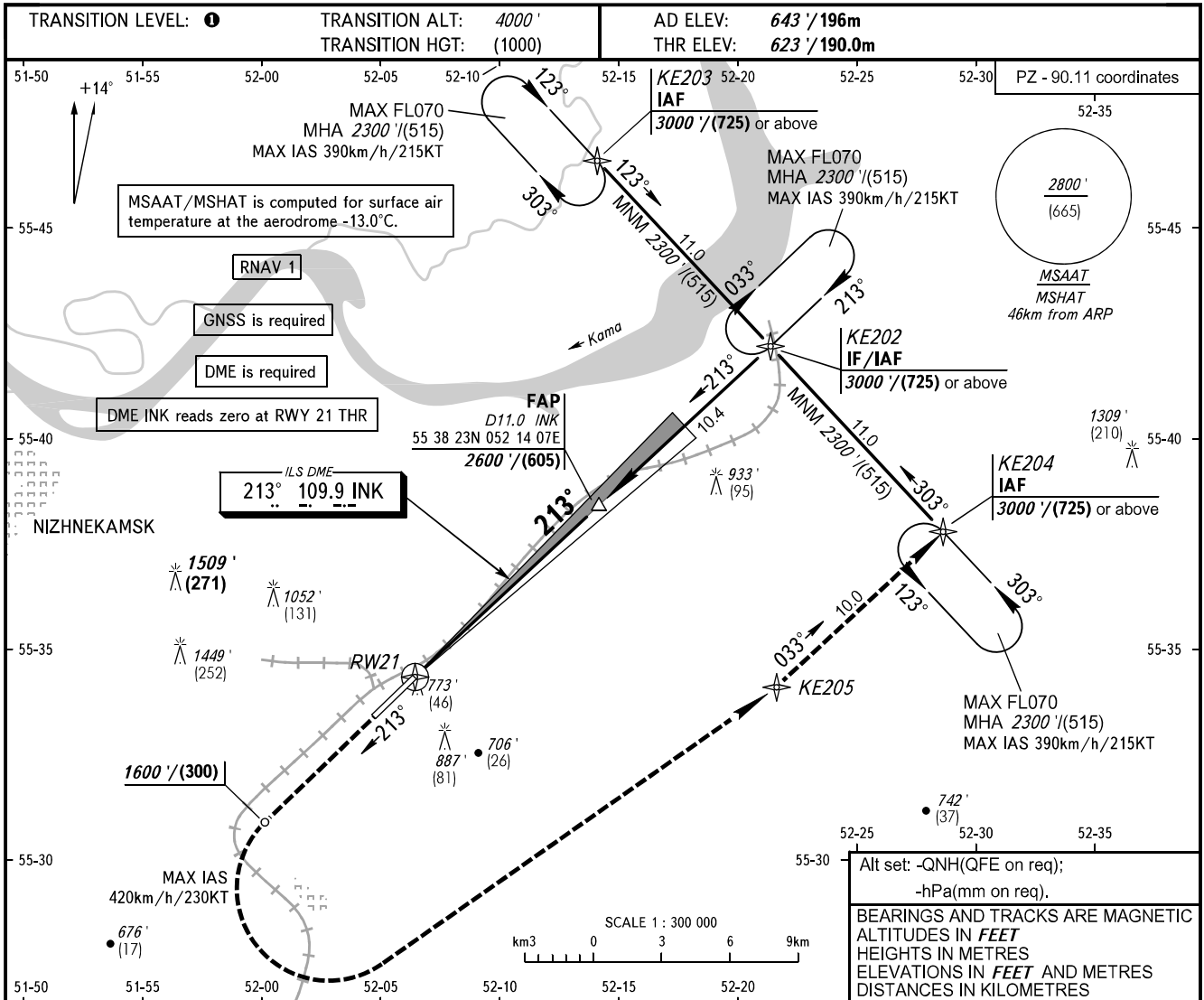


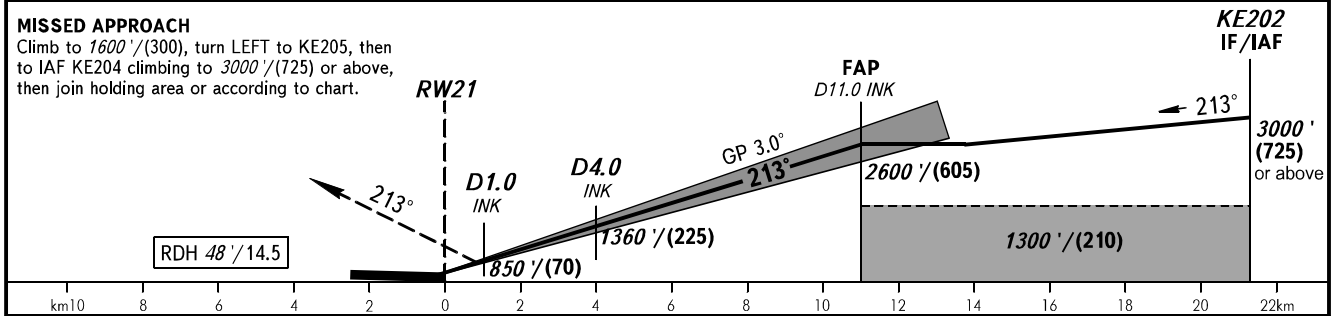
**INSTRUMENT  
APPROACH  
CHART - ICAO**

**NIZHNEKAMSK, RUSSIA  
BEGISHEVO  
ILS Z CAT I RWY 21**

RADAR	127.900
TOWER	127.900
START	121.200



DIST to RW21	2.0	4.0	6.0	8.0	10.0
ALTITUDE/HEIGHT	1020'/(120)	1360'/(225)	1700'/(330)	2040'/(435)	2380'/(535)



OCA(H)		A	B	C	D	1 TRANSITION LEVEL: - FL040 when QNH is 1013 hPa (760mm mercury column) or above; - FL050 when QNH is 977 hPa (733mm mercury column) or above, but less than 1013 hPa (760mm mercury column); - FL060 when QNH is less than 977 hPa (733mm mercury column). Visual manoeuvring in sector 228° - 018° is PROHIBITED.						
Straight-in Approach	CAT I	771' (148') (45)	781' (158') (48)	794' (171') (52)	807' (184') (56)							
		1070' (430') (130)	1190' (540') (165)	1290' (640') (195)	1340' (690') (210)							
GROUND SPEED	km/h	150	180	210	240	270	300	330	360	390	420	450
	kt	81	97	113	130	146	162	178	194	211	227	243
RATE OF DESCENT	m/s	2.2	2.6	3.0	3.5	3.9	4.3	4.8	5.2	5.6	6.1	6.5
	ft/min	427	512	597	682	768	853	938	1024	1109	1194	1280

CHANGE: NIL