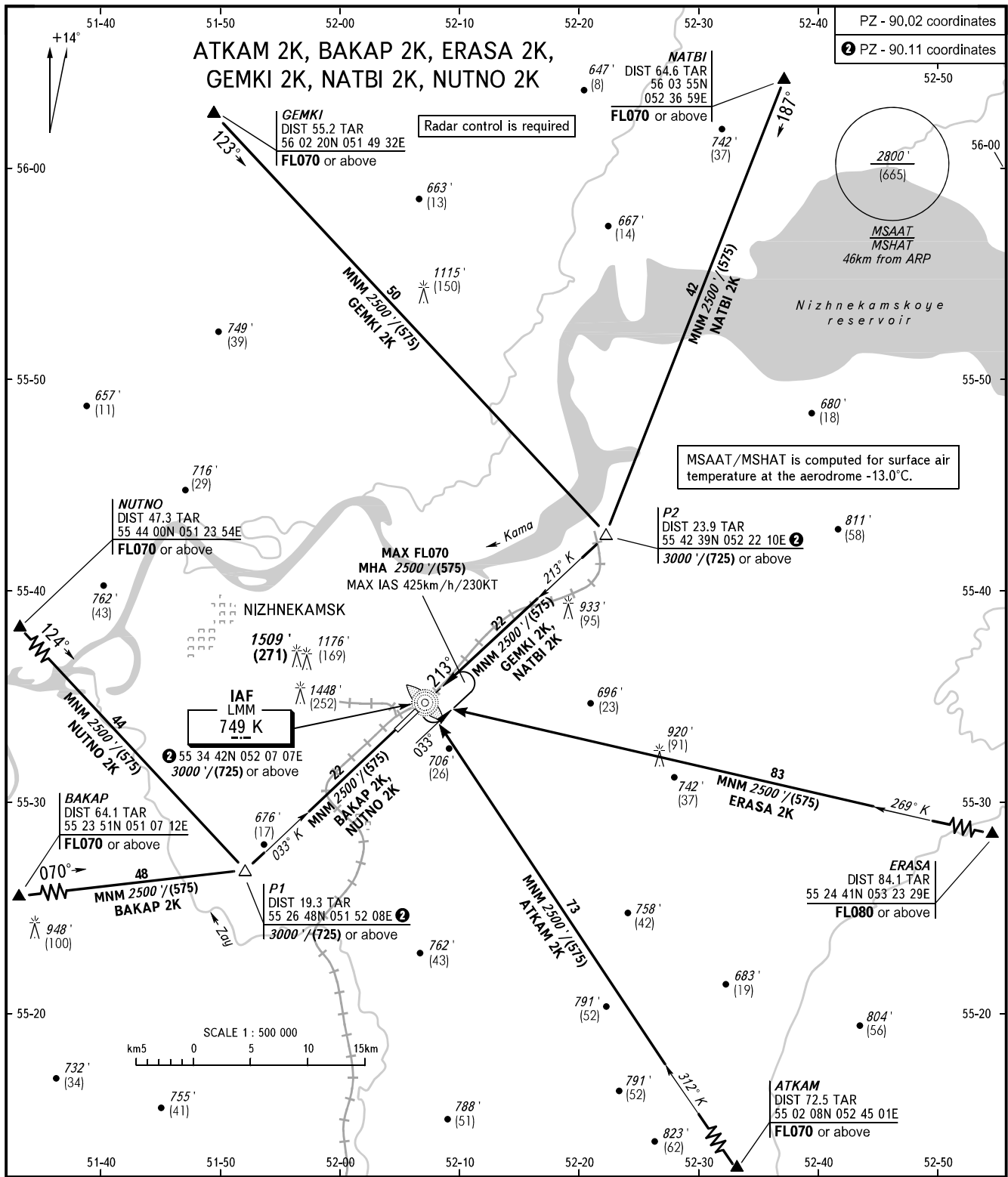


STANDARD ARRIVAL CHART
INSTRUMENT (STAR) - ICAO

NIZHNEKAMSK, RUSSIA
BEGISHEVO
RWY 21

TRANSITION
LEVEL: 1



<p>RADAR 127.900 START 121.200 KAZAN APPROACH 128.625</p>	<p>1 TRANSITION LEVEL: - FL040 when QNH is 1013 hPa (760mm mercury column) or above; - FL050 when QNH is 977 hPa (733mm mercury column) or above, but less than 1013 hPa (760mm mercury column); - FL060 when QNH is less than 977 hPa (733mm mercury column).</p>
<p>BEARINGS AND TRACKS ARE MAGNETIC ALTITUDES IN FEET HEIGHTS IN METRES ELEVATIONS IN FEET AND METRES DISTANCES IN KILOMETRES</p>	<p>Alt set: -QNH(QFE on req); -hPa(mm on req).</p>