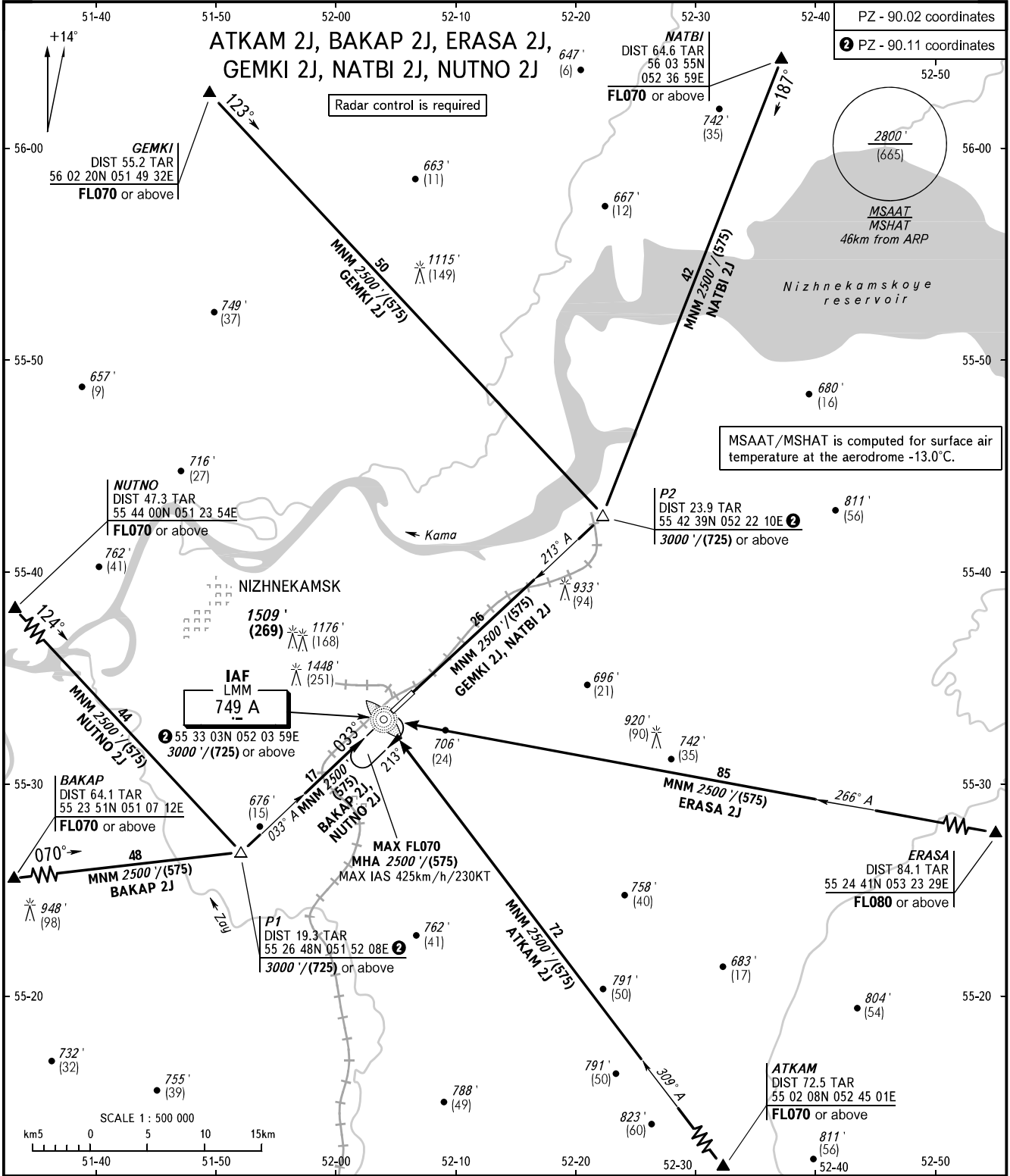


STANDARD ARRIVAL CHART  
INSTRUMENT (STAR) - ICAO

NIZHNEKAMSK, RUSSIA  
BEGISHEVO  
RWY 03

TRANSITION  
LEVEL: ①



RADAR 127.900  
START 121.200  
KAZAN APPROACH 128.625

- ① TRANSITION LEVEL:
- FL040 when QNH is 1013 hPa (760mm mercury column) or above;
  - FL050 when QNH is 977 hPa (733mm mercury column) or above, but less than 1013 hPa (760mm mercury column);
  - FL060 when QNH is less than 977 hPa (733mm mercury column).

BEARINGS AND TRACKS ARE MAGNETIC  
ALTITUDES IN FEET  
HEIGHTS IN METRES  
ELEVATIONS IN FEET AND METRES  
DISTANCES IN KILOMETRES

Alt set: -QNH(QFE on req);  
-hPa(mm on req).

CHANGE: P1, P2