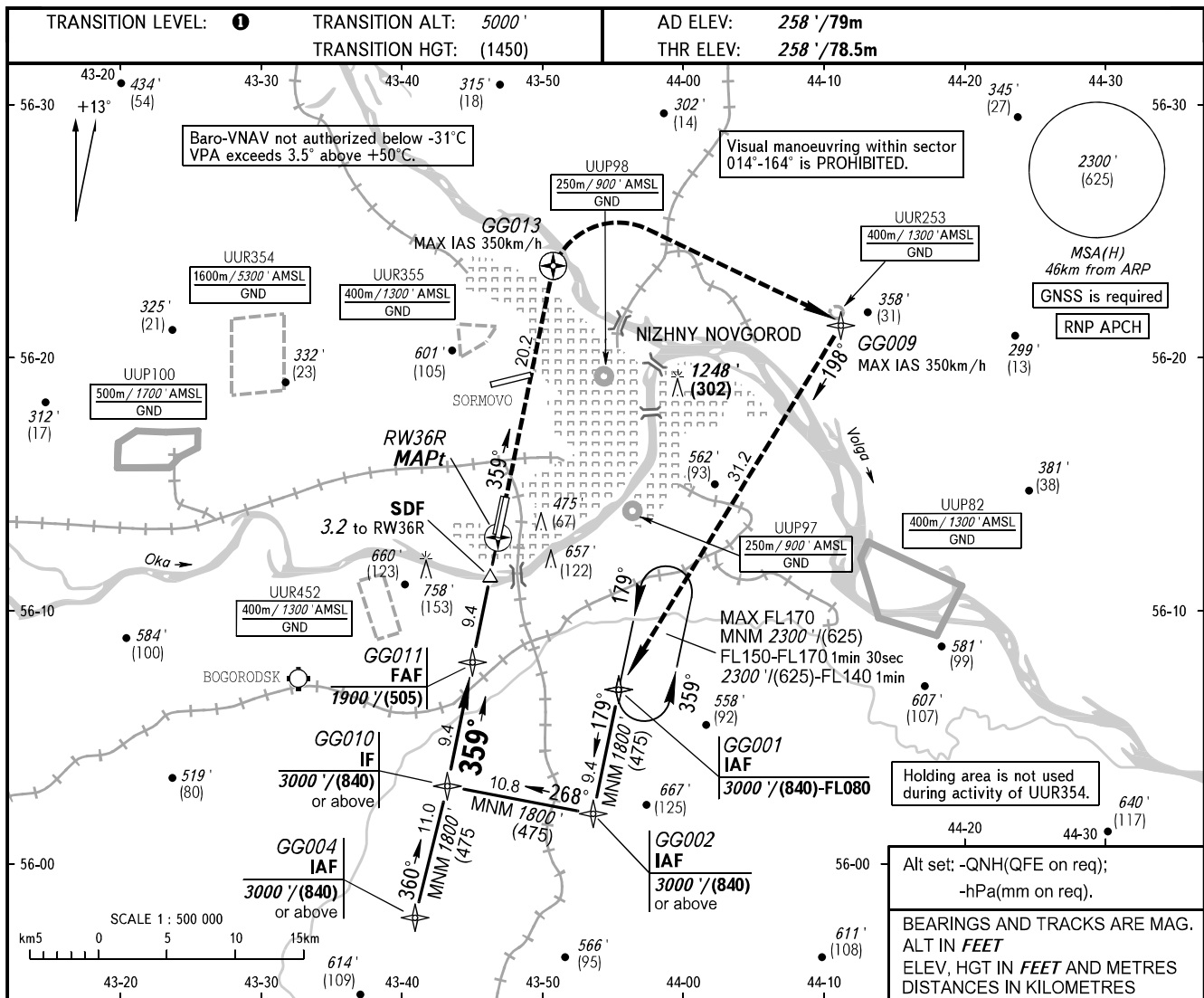


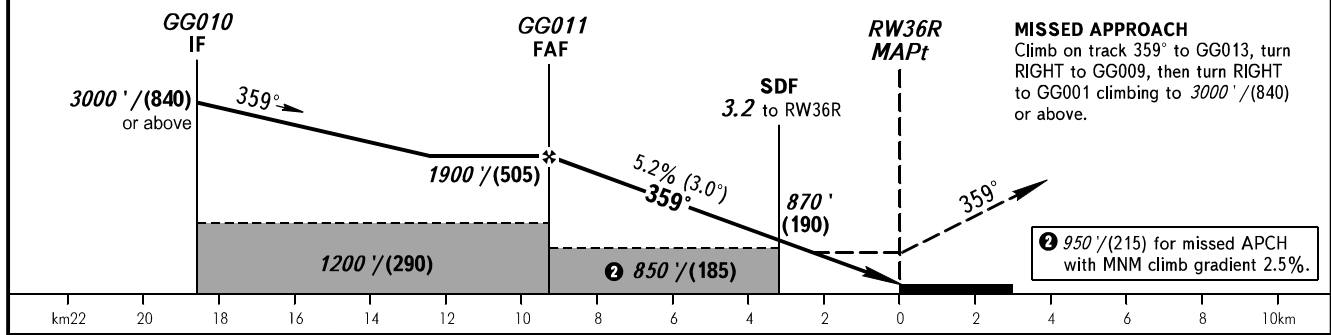
**INSTRUMENT
APPROACH
CHART - ICAO**

**NIZHNY NOVGOROD, RUSSIA
STRIGINO
RNP RWY 36R**

NIZHNY RADAR 120.800
NIZHNY TOWER 120.400



DIST to RW36R	9.3	8.0	6.0	4.0	2.0
ALTITUDE	1900'	1690'	1340'	1000'	650'



OCA(H)	MNM climb gradient	A	B	C	D						
Straight-in	LNAV 2.5%	950' (700')	950' (700')	950' (700')	950' (700')						
Approach	LNAV 3.1%	670' (410')	670' (410')	670' (410')	670' (410')						
LNAV / VNAV		545' (287')	555' (297')	565' (307')	575' (317')						
Circling		950' (700')	950' (700')	1160' (900')	1160' (900')						
GROUND SPEED		km/h	150	180	210	240	270	300	330	360	390
RATE OF DESCENT		m/s	2.2	2.6	3.0	3.5	3.9	4.3	4.8	5.2	5.6
		ft/min	427	512	597	682	768	853	938	1024	1109

① TRANSITION LEVEL:
- FL060 when QNH is 1013 hPa (760mm mercury column) or above;
- FL070 when QNH is 977 hPa (733mm mercury column) or above, but less than 1013 hPa (760mm mercury column);
- FL080 when QNH is less than 977 hPa (733mm mercury column).

WARNING
MAPt - RW36R. Timing not authorized for defining the MAPt.