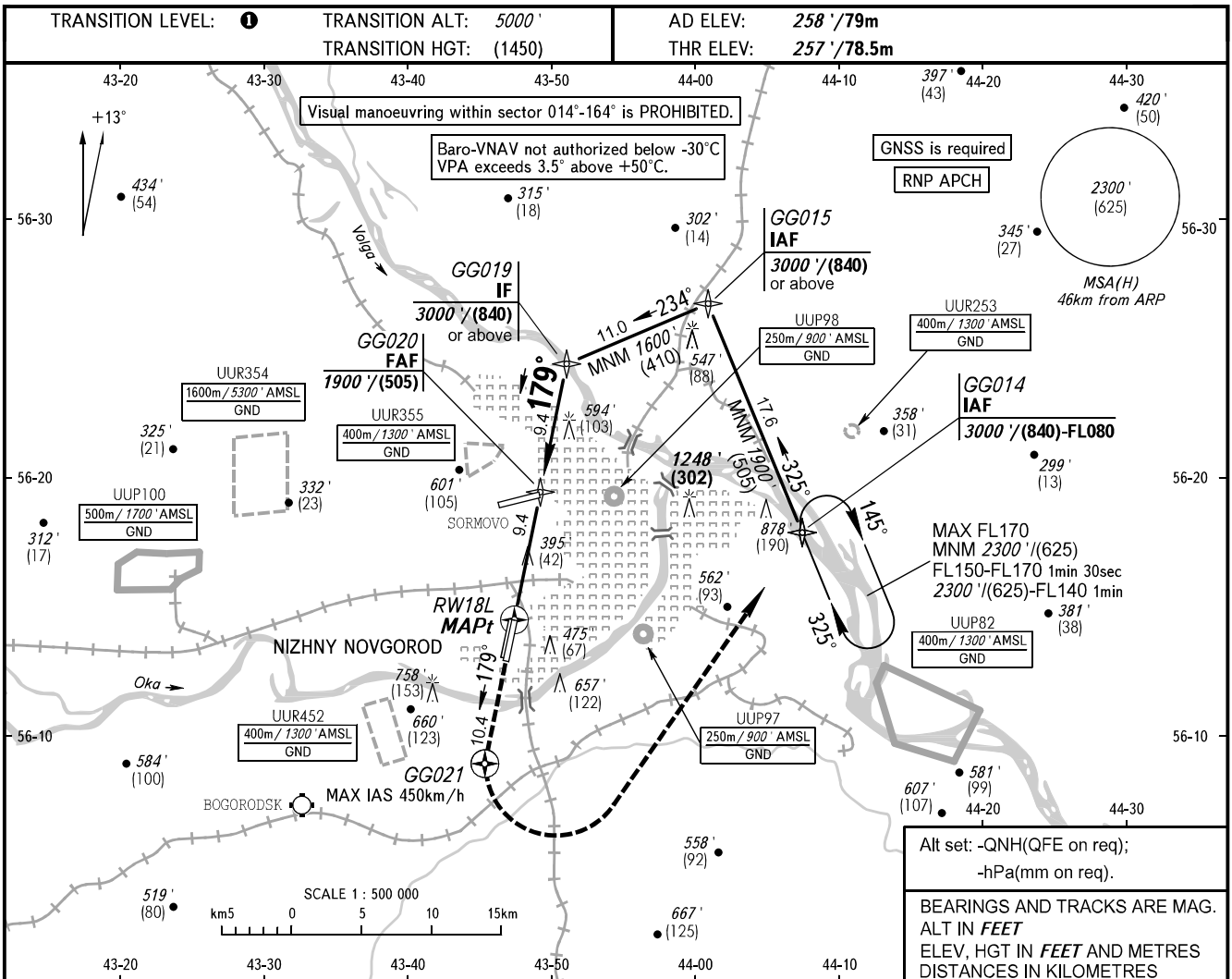


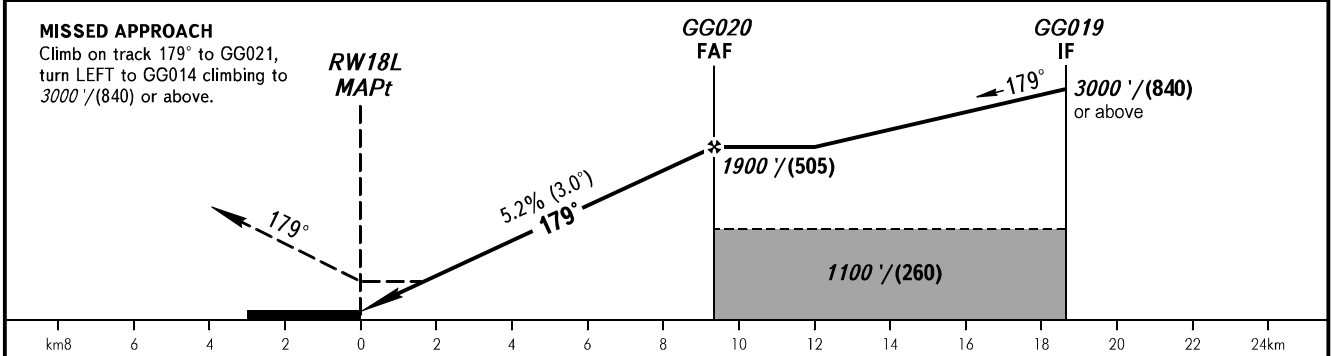
**INSTRUMENT
APPROACH
CHART - ICAO**

NIZHNY RADAR 120.800
NIZHNY TOWER 120.400

**NIZHNY NOVGOROD, RUSSIA
STRIGINO
RNP RWY 18L**



DIST to RW18L	2.0	4.0	6.0	8.0	9.3
ALTITUDE	650'	990'	1340'	1680'	1900'



OCA(H)		A	B	C	D	1 TRANSITION LEVEL: - FL060 when QNH is 1013 hPa (760mm mercury column) or above; - FL070 when QNH is 977 hPa (733mm mercury column) or above, but less than 1013 hPa (760mm mercury column); - FL080 when QNH is less than 977 hPa (733mm mercury column). WARNING MAPt - RW18L. Timing not authorized for defining MAPt.					
Straight-in	LNAV	650' (390')	650' (390')	650' (390')	650' (390')						
	LNAV/VNAV	535' (278')	545' (288')	555' (298')	565' (308')						
Circling		720' (470')	870' (610')	1160' (900')	1160' (900')						
GROUND SPEED		km/h	150	180	210	240	270	300	330	360	390
RATE OF DESCENT		m/s	2.2	2.6	3.0	3.5	3.9	4.3	4.8	5.2	5.6
		ft/min	427	512	597	682	768	853	938	1024	1109

CHANGE: New chart