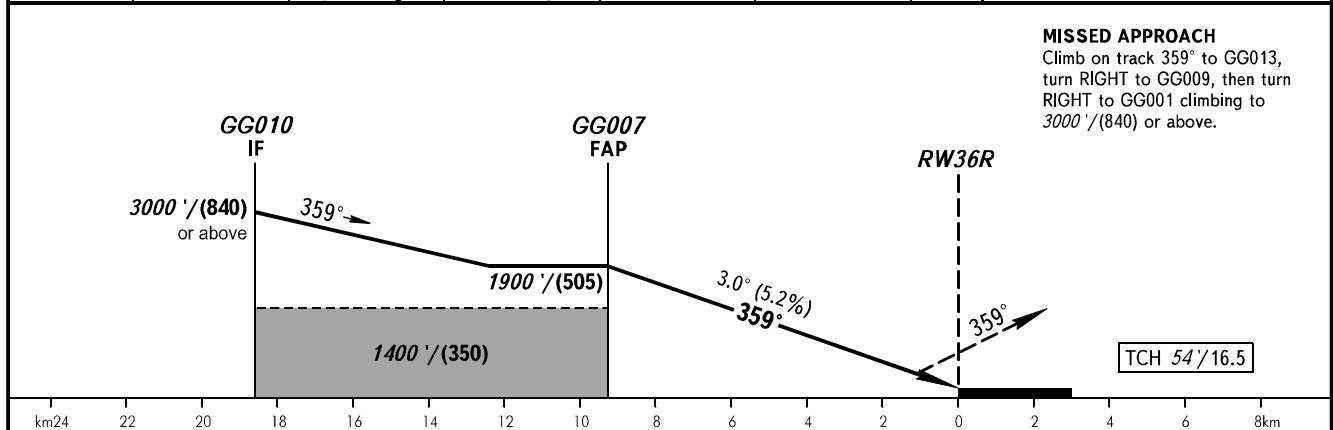
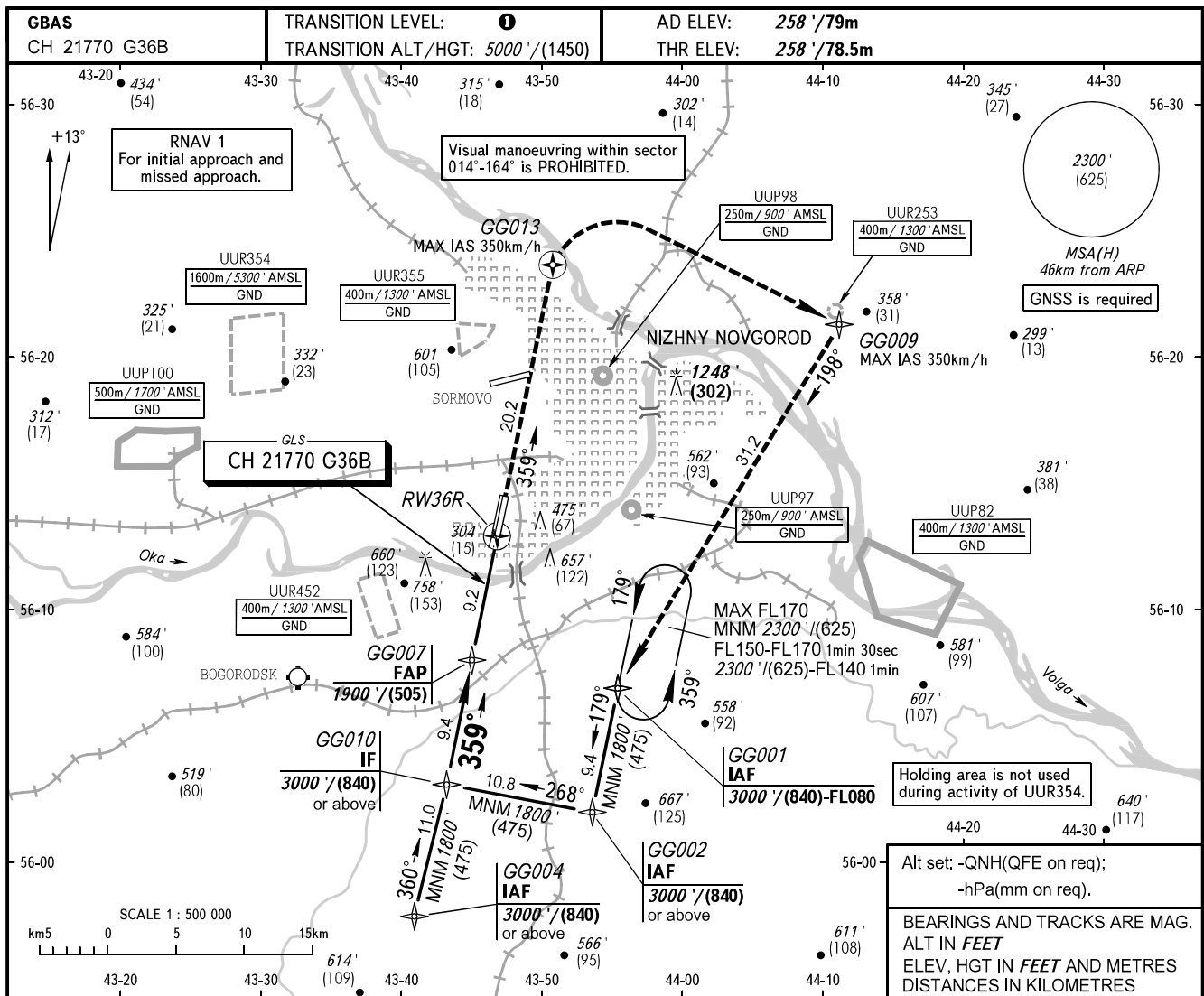


**INSTRUMENT  
APPROACH  
CHART - ICAO**

NIZHNY RADAR 120.800  
NIZHNY TOWER 120.400

**NIZHNY NOVGOROD, RUSSIA  
STRIGINO  
GLS RWY 36R**



OCA(H)	MNM climb gradient	A	B	C	D						
Straight-in Approach	CAT I	644' (386')	656' (398')	664' (406')	675' (417')						
		415' (156')	425' (166')	436' (177')	449' (190')						
Circling		720' (470')	870' (610')	1160' (900')	1160' (900')						
GROUND SPEED		km/h	150	180	210	240	270	300	330	360	390
RATE OF DESCENT		m/s	2.2	2.6	3.0	3.5	3.9	4.3	4.8	5.2	5.6
		ft/min	427	512	597	682	768	853	938	1024	1109

① **TRANSITION LEVEL:**

- FL060 when QNH is 1013 hPa (760mm mercury column) or above;
- FL070 when QNH is 977 hPa (733mm mercury column) or above, but less than 1013 hPa (760mm mercury column);
- FL080 when QNH is less than 977 hPa (733mm mercury column).