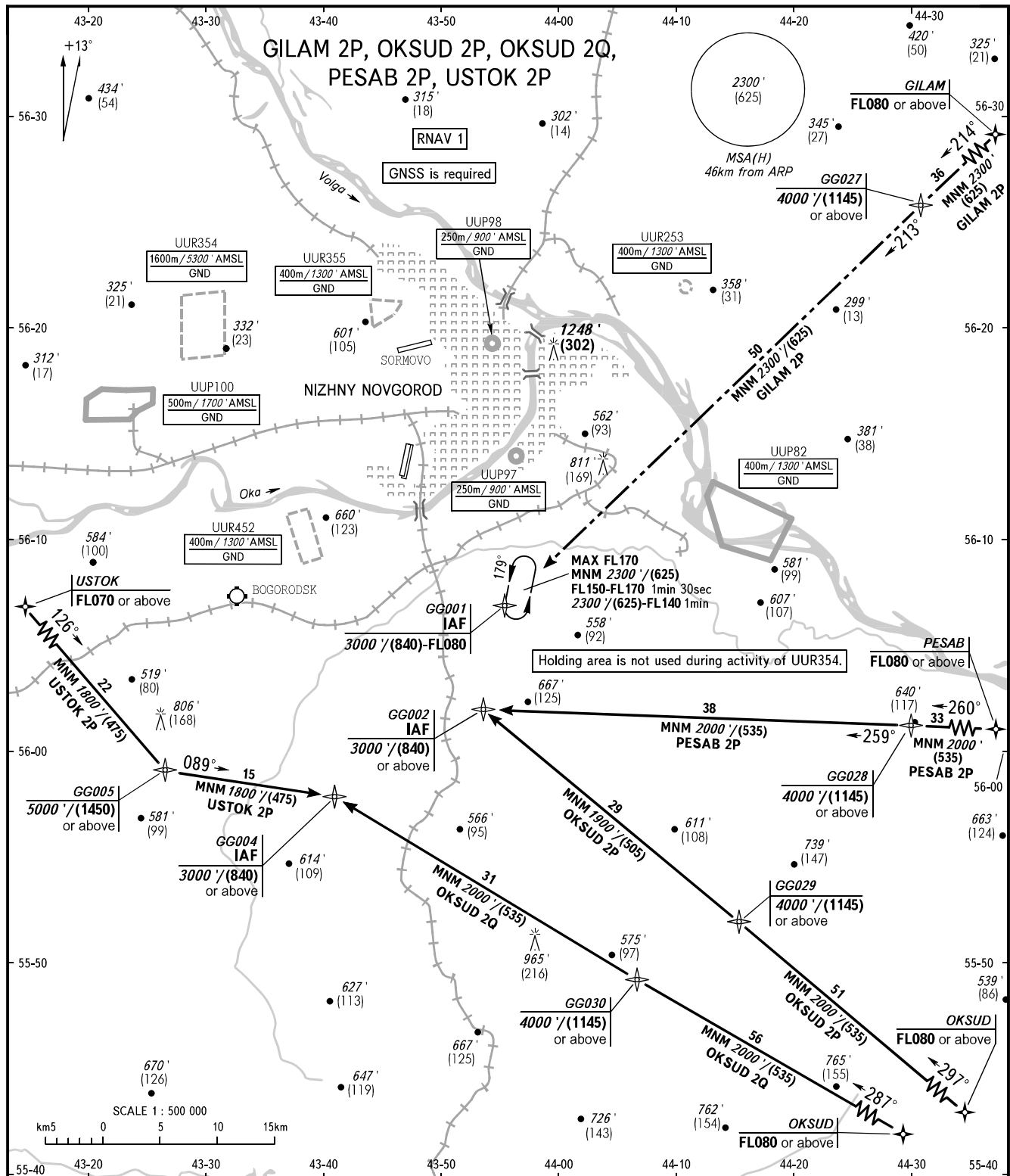


STANDARD ARRIVAL CHART
INSTRUMENT (STAR) - ICAO

NIZHNY NOVGOROD, RUSSIA
STRIGINO
RNAV RWY 36R

TRANSITION
LEVEL: **1**



NIZHNY APPROACH **124.700**
NIZHNY RADAR **120.800**
NIZHNY TOWER **120.400**

1 TRANSITION LEVEL:
- FL060 when QNH is 1013 hPa (760mm mercury column) or above;
- FL070 when QNH is 977 hPa (733mm mercury column);
but less than 1013 hPa (760mm mercury column);
- FL080 when QNH is less than 977 hPa (733mm mercury column).

BEARINGS AND TRACKS ARE MAGNETIC
ALTITUDES IN FEET, HEIGHTS IN METRES
ELEVATIONS IN FEET AND METRES
DISTANCES IN KILOMETRES

Alt set: -QNH(QFE on req);
-hPa(mm on req).

CHANGE: PESAB - GG028