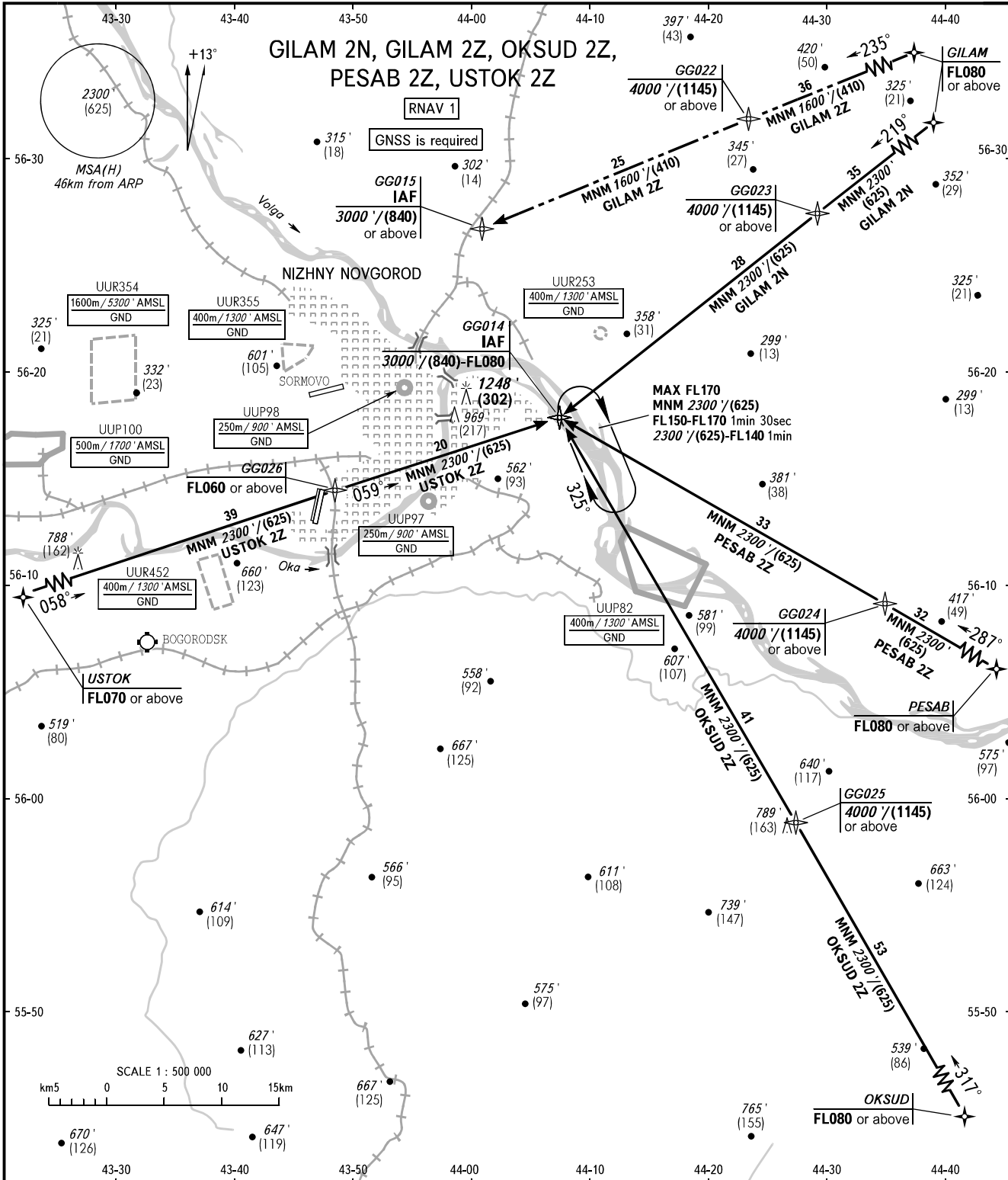


STANDARD ARRIVAL CHART
INSTRUMENT (STAR) - ICAO

NIZHNY NOVGOROD, RUSSIA
STRIGINO
RNAV RWY 18L

TRANSITION
LEVEL: 1



NIZHNY APPROACH **124.700**
NIZHNY RADAR **120.800**
NIZHNY TOWER **120.400**

1 TRANSITION LEVEL:
- FL060 when QNH is 1013 hPa (760mm mercury column) or above;
- FL070 when QNH is 977 hPa (733mm mercury column) or above,
but less than 1013 hPa (760mm mercury column);
- FL080 when QNH is less than 977 hPa (733mm mercury column).

CHANGE: NIL

BEARINGS AND TRACKS ARE MAGNETIC
ALTITUDES IN FEET, HEIGHTS IN METRES
ELEVATIONS IN FEET AND METRES
DISTANCES IN KILOMETRES

Alt set: -QNH(QFE on req);
-hPa(mm on req).