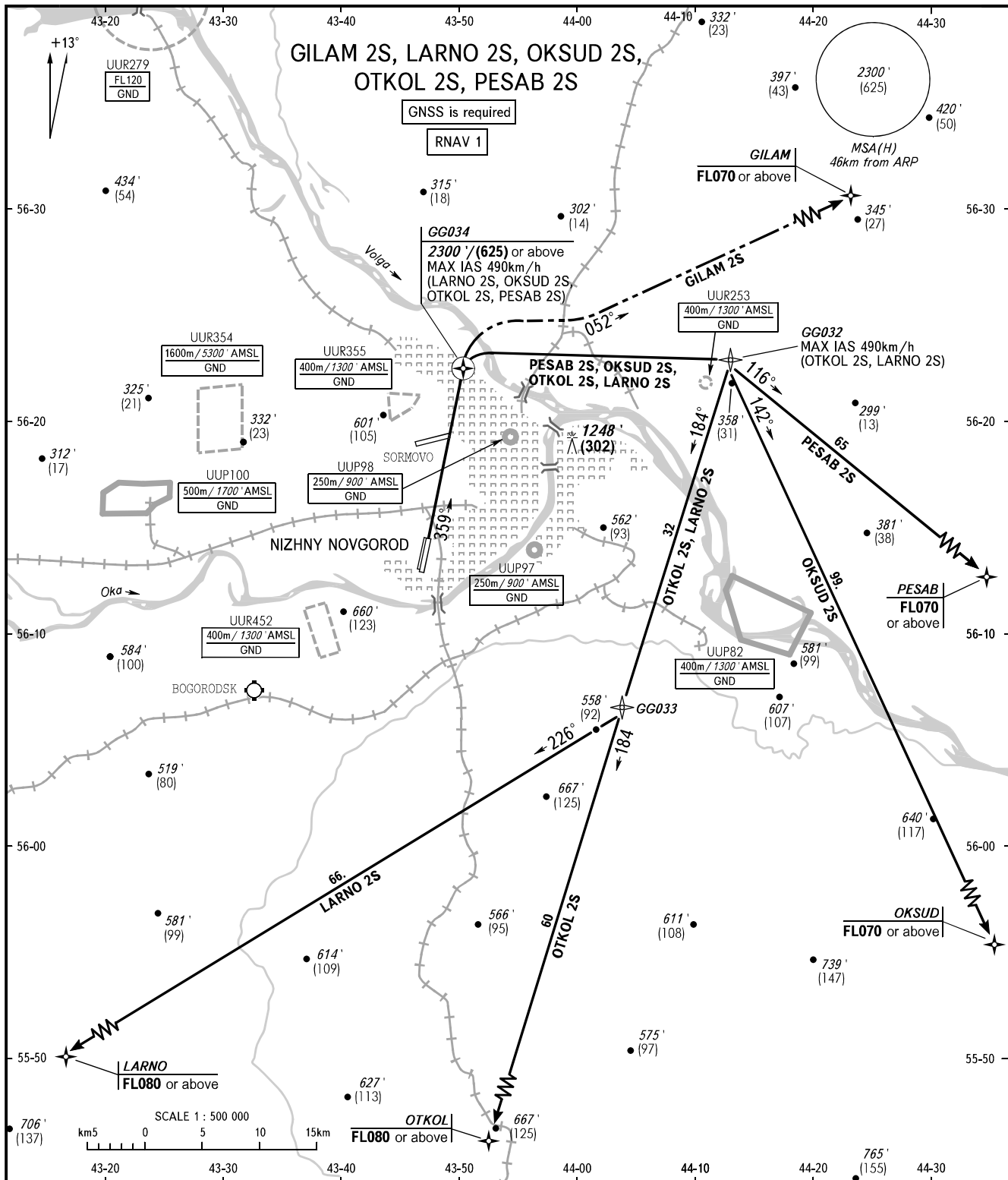


STANDARD DEPARTURE CHART
INSTRUMENT (SID) - ICAO

TRANSITION ALT: 5000'
TRANSITION HGT: (1450)

NIZHNY NOVGOROD, RUSSIA
STRIGINO
RNAV RWY 36R



NIZHNY TOWER **120.400**
NIZHNY RADAR **120.800**
NIZHNY APPROACH **124.700**

NOTE
The minimum climb gradient required due to the airspace structure is 4.3% up to 2300' (625) for all SID.

BEARINGS AND TRACKS ARE MAGNETIC
ALTITUDES IN FEET, HEIGHTS IN METRES
ELEVATIONS IN FEET AND METRES
DISTANCES IN KILOMETRES

Alt set: -QNH(QFE on req);
-hPa(mm on req).