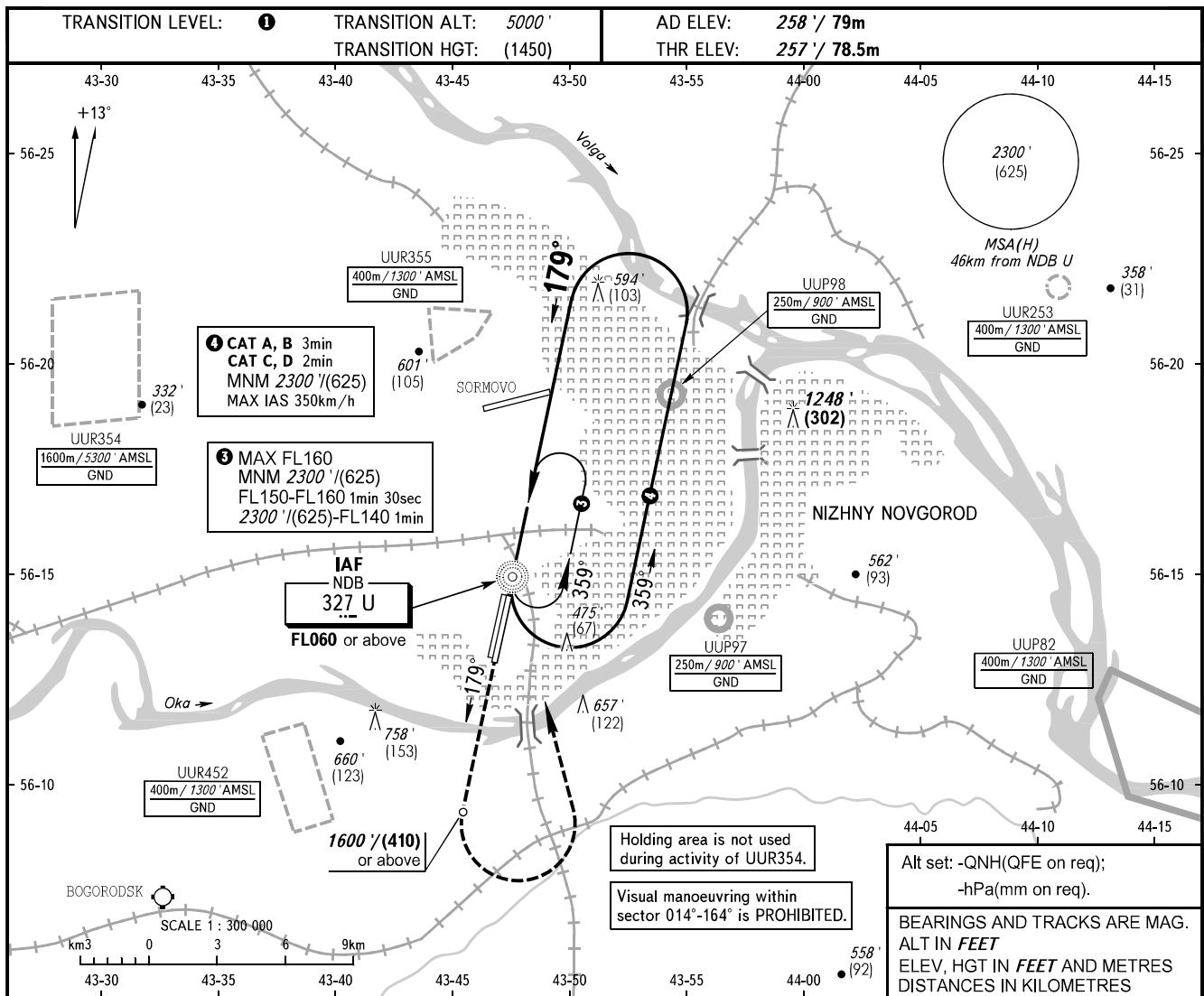


INSTRUMENT
APPROACH
CHART - ICAO

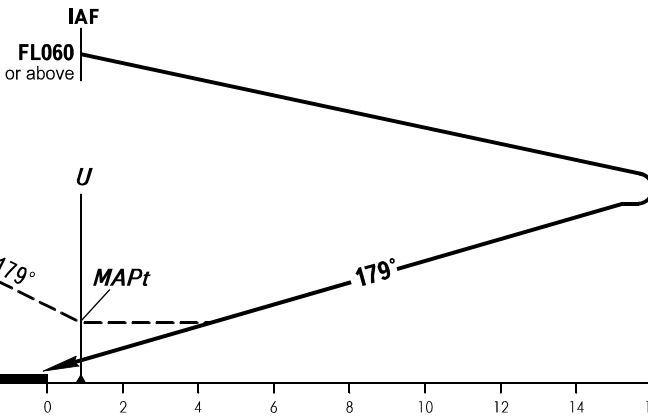
NIZHNY RADAR 120.800
NIZHNY TOWER 120.400

NIZHNY NOVGOROD, RUSSIA
STRIGINO
NDB Y RWY 18L



MISSED APPROACH

Climb straight ahead to 1600' (410) or above, turn LEFT to NDB U climbing to 2300' (625) or above. Turn before MAPt is prohibited.



OCA(H)		A	B	C	D
Straight-in		890' (640')	890' (640')	890' (640')	890' (640')
	②	1460' (1210')	1460' (1210')	1460' (1210')	1460' (1210')
Approach					
Circling		1160' (900')	1160' (900')	1460' (1210')	1460' (1210')

① TRANSITION LEVEL:
- FL060 when QNH is 1013 hPa (760mm mercury column) or above;
- FL070 when QNH is 977 hPa (733mm mercury column) or above, but less than 1013 hPa (760mm mercury column);
- FL080 when QNH is less than 977 hPa (733mm mercury column).

② During UUR355 activity.

WARNING
Descending below 2300' (625) by ATS unit instruction. MAPt at NDB U. Timing not authorized for defining MAPt.