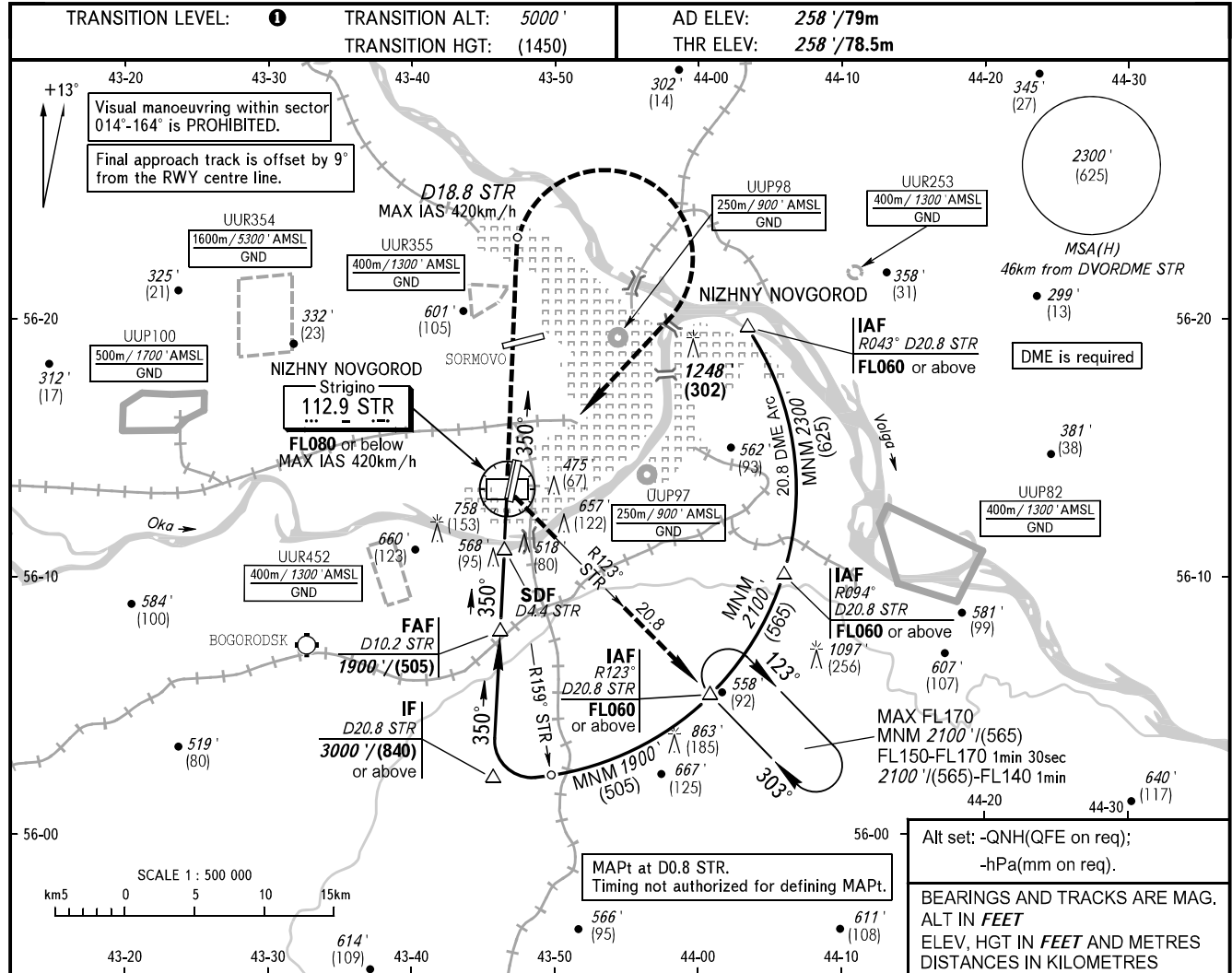


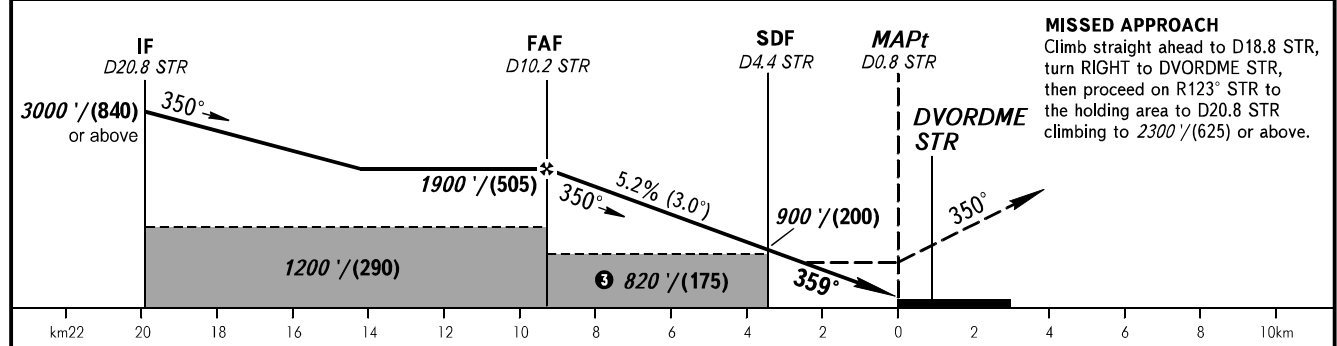
**INSTRUMENT
APPROACH
CHART - ICAO**

NIZHNY RADAR 120.800
NIZHNY TOWER 120.400

**NIZHNY NOVGOROD, RUSSIA
STRIGINO
DVOR RWY 36R**



DME STR	4.0	6.0	8.0	10.0	10.2
ALTITUDE	840'	1190'	1530'	1870'	1900'



OCA(H)		MNM climb gradient	A	B	C	D					
Straight-in Approach	WO SDF	2.5%	1050' (790')	1050' (790')	1050' (790')	1050' (790')					
	With SDF	3.2%	730' (470')	730' (470')	730' (470')	730' (470')					
Circling			1050' (790')	1050' (790')	1160' (900')	1160' (900')					
GROUND SPEED		km/h	150	180	210	240	270	300	330	360	390
RATE OF DESCENT		m/s	2.2	2.6	3.0	3.5	3.9	4.3	4.8	5.2	5.6
		ft/min	427	512	597	682	768	853	938	1024	1109

1 TRANSITION LEVEL:
- FLO60 when QNH is 1013 hPa (760mm mercury column) or above;
- FLO70 when QNH is 977 hPa (733mm mercury column) or above, but less than 1013 hPa (760mm mercury column);
- FLO80 when QNH is less than 977 hPa (733mm mercury column).

2 SDF to be used for missed APCH with MNM climb gradient 3.2%.

3 1050' / (245) for missed APCH with MNM climb gradient 2.5%.