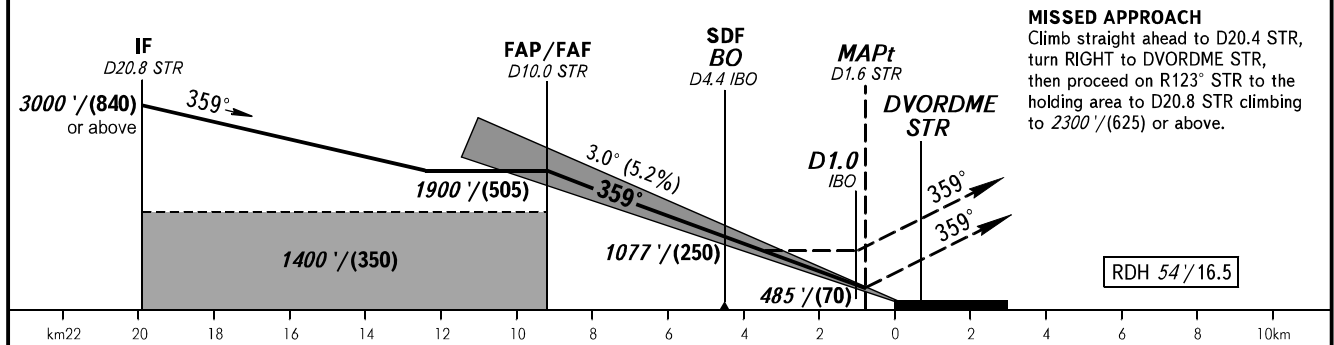
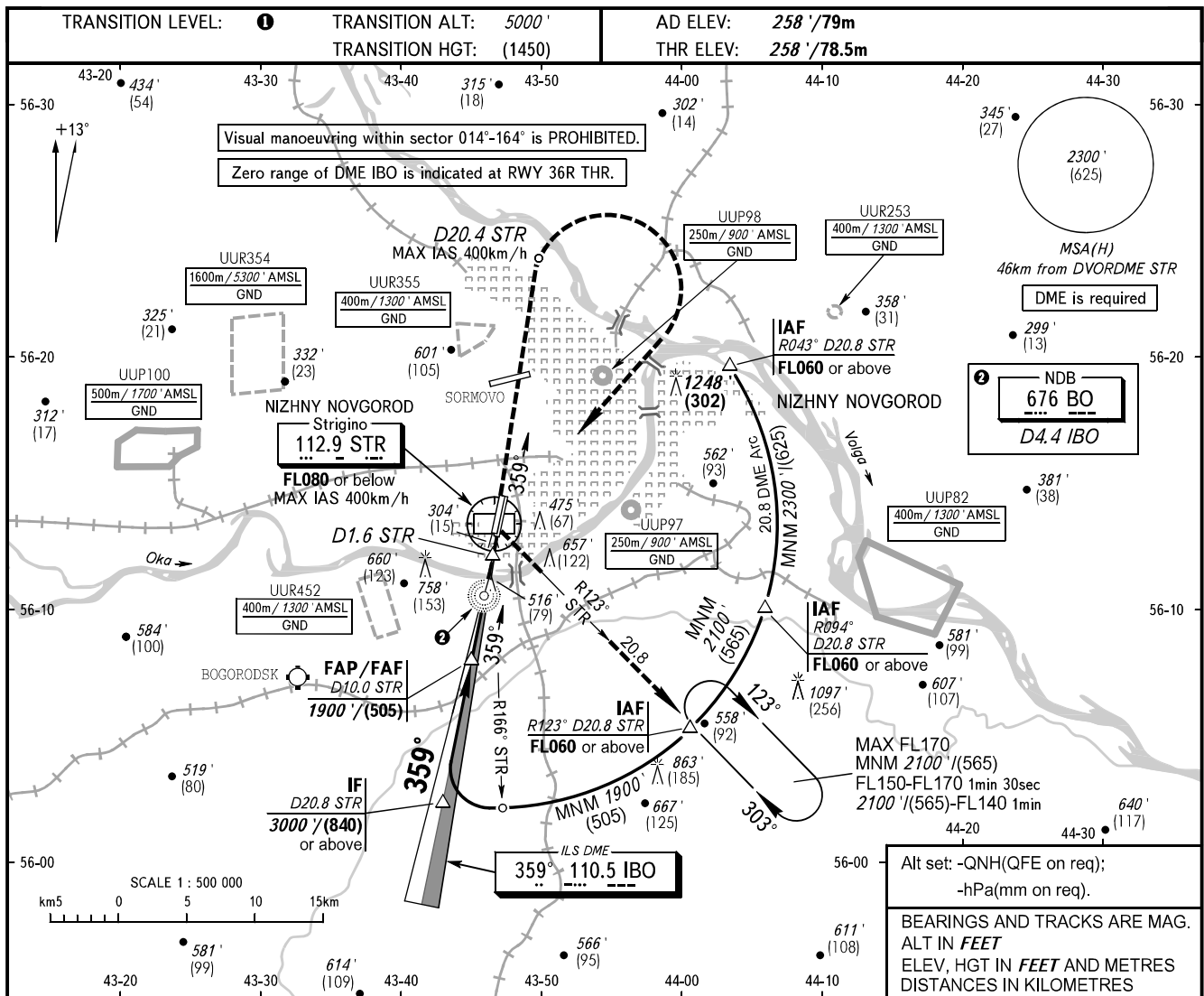


**INSTRUMENT
APPROACH
CHART - ICAO**

NIZHNY RADAR 120.800
NIZHNY TOWER 120.400

**NIZHNY NOVGOROD, RUSSIA
STRIGINO
ILS Y CAT I, LOC Y RWY 36R**



OCA(H)		A	B	C	D	1 TRANSITION LEVEL:					
Straight-in Approach	CAT I	2.5%*	644' (386')	656' (398')	664' (406')	675' (417')	- FL060 when QNH is 1013 hPa (760mm mercury column) or above;				
		3.0%*	415' (156')	425' (166')	436' (177')	449' (190')	- FL070 when QNH is 977 hPa (733mm mercury column) or above, but less than 1013 hPa (760mm mercury column);				
	LOC	With SDF	770' (510')	770' (510')	770' (510')	770' (510')	- FL080 when QNH is less than 977 hPa (733mm mercury column).				
		WO SDF	870' (610')	870' (610')	870' (610')	870' (610')	WARNING				
Circling		870' (610')	870' (610')	1160' (900')	1160' (900')	MAPt at D1.6 STR. Timing not authorized for defining MAPt. *MNM climb gradient for missed APCH.					
GROUND SPEED		km/h	150	180	210	240	270	300	330	360	390
RATE OF DESCENT		m/s	2.2	2.6	3.0	3.5	3.9	4.3	4.8	5.2	5.6
		ft/min	427	512	597	682	768	853	938	1024	1109