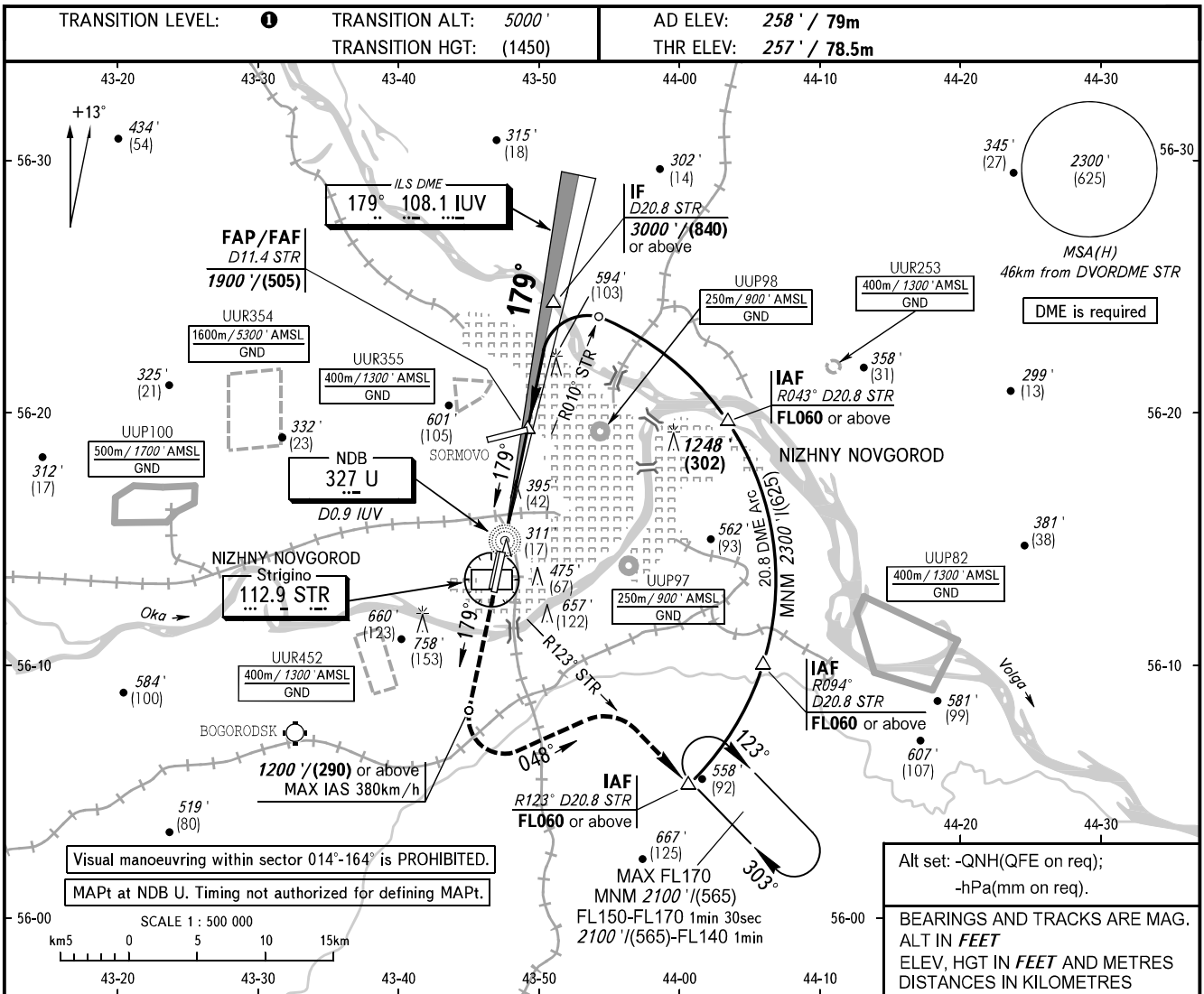


**INSTRUMENT  
APPROACH  
CHART - ICAO**

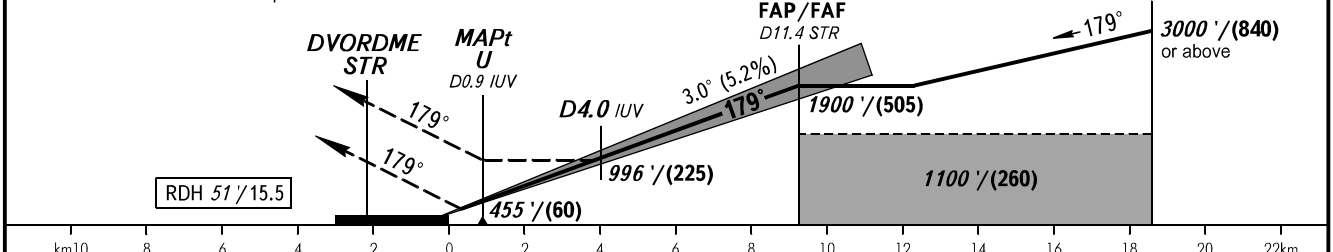
NIZHNY RADAR 120.800  
NIZHNY TOWER 120.400

**NIZHNY NOVGOROD, RUSSIA  
STRIGINO  
ILS Y CAT I/II, LOC Y RWY 18L**



Alt set: -QNH(QFE on req);  
-hPa(mm on req).  
BEARINGS AND TRACKS ARE MAG.  
ALT IN FEET  
ELEV, HGT IN FEET AND METRES  
DISTANCES IN KILOMETRES

**MISSED APPROACH**  
Climb straight ahead to 1200' (290) or above, turn LEFT onto track 048° to intercept R123° STR, then proceed on R123° STR to the holding area to D20.8 STR climbing to 2300' (625) or above. Turn before DVORDME STR is prohibited.



OCA(H)		A	B	C	D
Straight-in Approach	CAT I	401' (145')	412' (156')	424' (168')	438' (182')
	CAT II	311' (54')	322' (65')	335' (77')	351' (93')
	LOC	650' (390')	650' (390')	650' (390')	650' (390')
Circling		720' (470')	870' (610')	1160' (900')	1160' (900')

**TRANSITION LEVEL:**  
- FL060 when QNH is 1013 hPa (760mm mercury column) or above;  
- FL070 when QNH is 977 hPa (733mm mercury column) or above, but less than 1013 hPa (760mm mercury column);  
- FL080 when QNH is less than 977 hPa (733mm mercury column).

**WARNING**  
Zero range of DME IUV is indicated at RWY 18L THR.

GROUND SPEED	km/h	150	180	210	240	270	300	330	360	390
RATE OF DESCENT	m/s	2.2	2.6	3.0	3.5	3.9	4.3	4.8	5.2	5.6
	ft/min	427	512	597	682	768	853	938	1024	1109

CHANGE: New chart