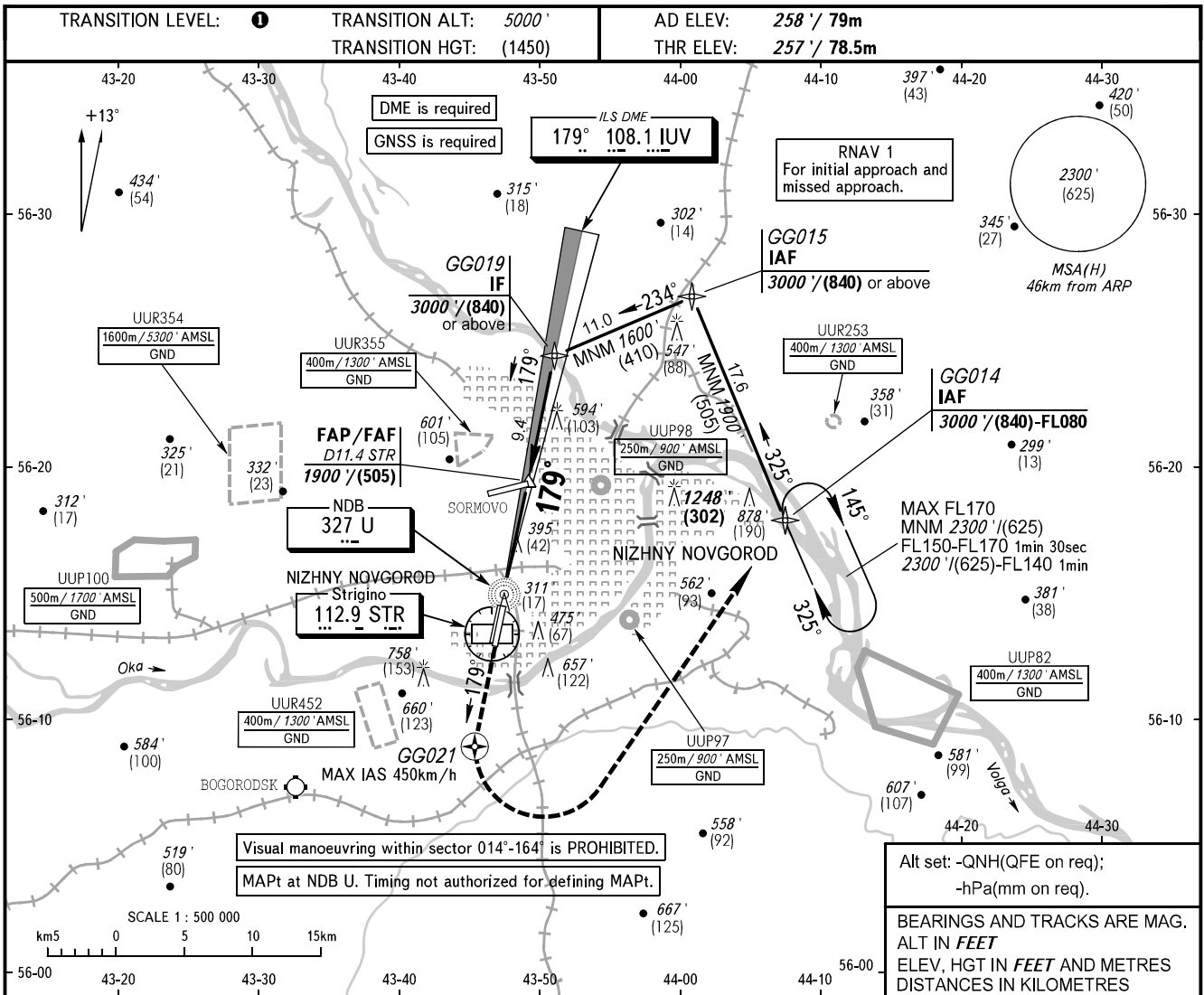


**INSTRUMENT  
APPROACH  
CHART - ICAO**

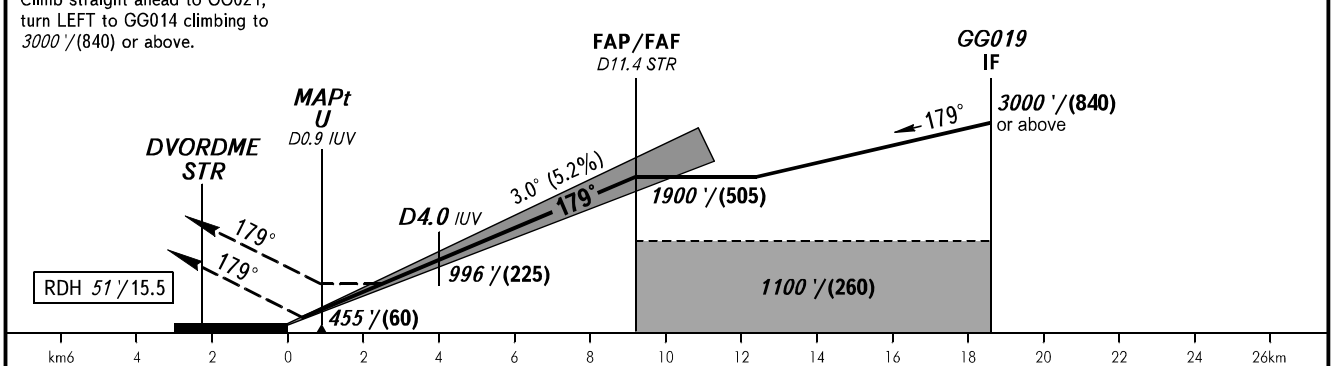
NIZHNY RADAR 120.800  
NIZHNY TOWER 120.400

**NIZHNY NOVGOROD, RUSSIA  
STRIGINO  
ILS X CAT I/II, LOC X RWY 18L**



**MISSED APPROACH**  
Climb straight ahead to GG021, turn LEFT to GG014 climbing to 3000' / (840) or above.

Zero range of DME IUUV is indicated at RWY 18L THR.



OCA(H)		A	B	C	D					
Straight-in Approach	<b>CAT I</b>	401' (145')	412' (156')	424' (168')	438' (182')					
	<b>CAT II</b>	311' (54')	322' (65')	335' (77')	351' (93')					
	<b>LOC</b>	650' (390')	650' (390')	650' (390')	650' (390')					
Circling		720' (470')	870' (610')	1160' (900')	1160' (900')					
GROUND SPEED	km/h	150	180	210	240	270	300	330	360	390
RATE OF DESCENT	m/s	2.2	2.6	3.0	3.5	3.9	4.3	4.8	5.2	5.6
	ft/min	427	512	597	682	768	853	938	1024	1109

**TRANSITION LEVEL:**  
 - FL060 when QNH is 1013 hPa (760mm mercury column) or above;  
 - FL070 when QNH is 977 hPa (733mm mercury column) or above, but less than 1013 hPa (760mm mercury column);  
 - FL080 when QNH is less than 977 hPa (733mm mercury column).

CHANGE: NIL