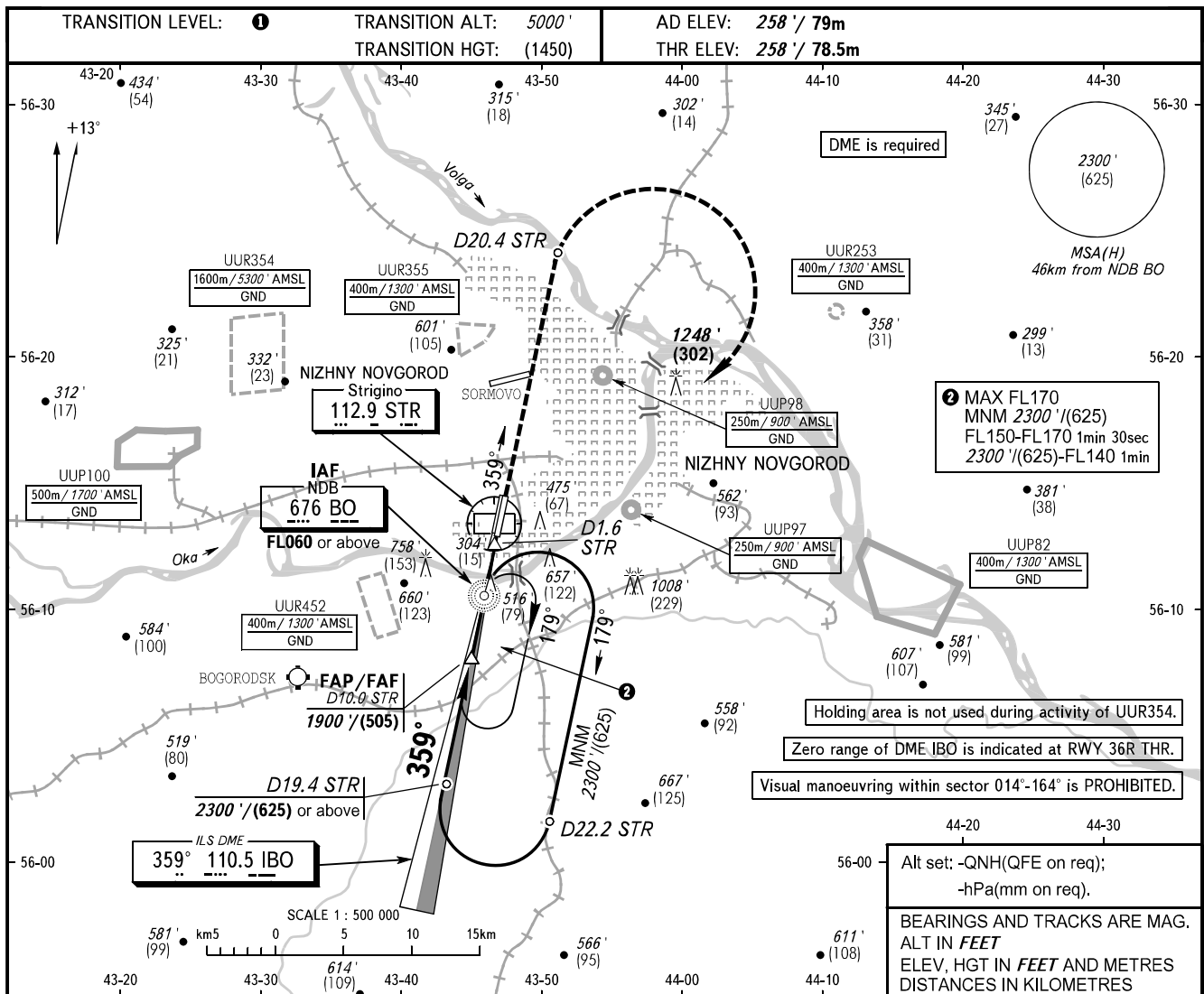


**INSTRUMENT
APPROACH
CHART - ICAO**

NIZHNY RADAR 120.800
NIZHNY TOWER 120.400

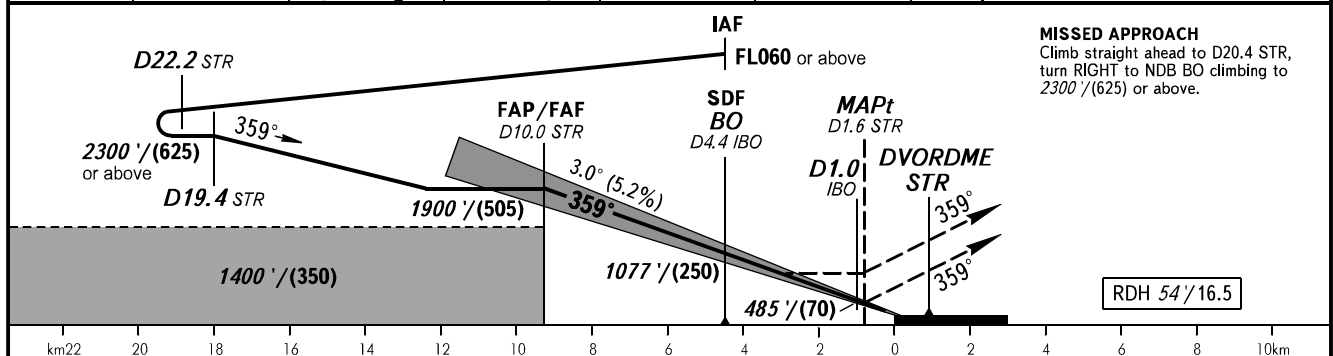
**NIZHNY NOVGOROD, RUSSIA
STRIGINO
ILS Z CAT I, LOC Z RWY 36R**



2 MAX FL170
MNM 2300' / (625)
FL150-FL170 1min 30sec
2300' / (625)-FL140 1min

Holding area is not used during activity of UUR354.
Zero range of DME IBO is indicated at RWY 36R THR.
Visual manoeuvring within sector 014°-164° is PROHIBITED.

Alt set: -QNH(QFE on req);
-hPa(mm on req).
BEARINGS AND TRACKS ARE MAG.
ALT IN FEET
ELEV. HGT IN FEET AND METRES
DISTANCES IN KILOMETRES



MISSED APPROACH
Climb straight ahead to D20.4 STR, turn RIGHT to NDB BO climbing to 2300' / (625) or above.

OCA(H)		A	B	C	D						
Straight-in Approach	CAT I	2.5%*	644' (386')	656' (398')	664' (406')	675' (417')					
		3.0%*	415' (156')	425' (166')	436' (177')	449' (190')					
	LOC	With SDF	770' (510')	770' (510')	770' (510')	770' (510')					
		WO SDF	870' (610')	870' (610')	870' (610')	870' (610')					
Circling		870' (610')	870' (610')	1160' (900')	1160' (900')						
GROUND SPEED		km/h	150	180	210	240	270	300	330	360	390
RATE OF DESCENT		m/s	2.2	2.6	3.0	3.5	3.9	4.3	4.8	5.2	5.6
		ft/min	427	512	597	682	768	853	938	1024	1109

1 TRANSITION LEVEL:
 - FL060 when QNH is 1013 hPa (760mm mercury column) or above;
 - FL070 when QNH is 977 hPa (733mm mercury column) or above, but less than 1013 hPa (760mm mercury column);
 - FL080 when QNH is less than 977 hPa (733mm mercury column).
WARNING
 MAPt at D1.6 STR.
 Timing not authorized for defining MAPt.
 *MNM climb gradient for missed APCH.