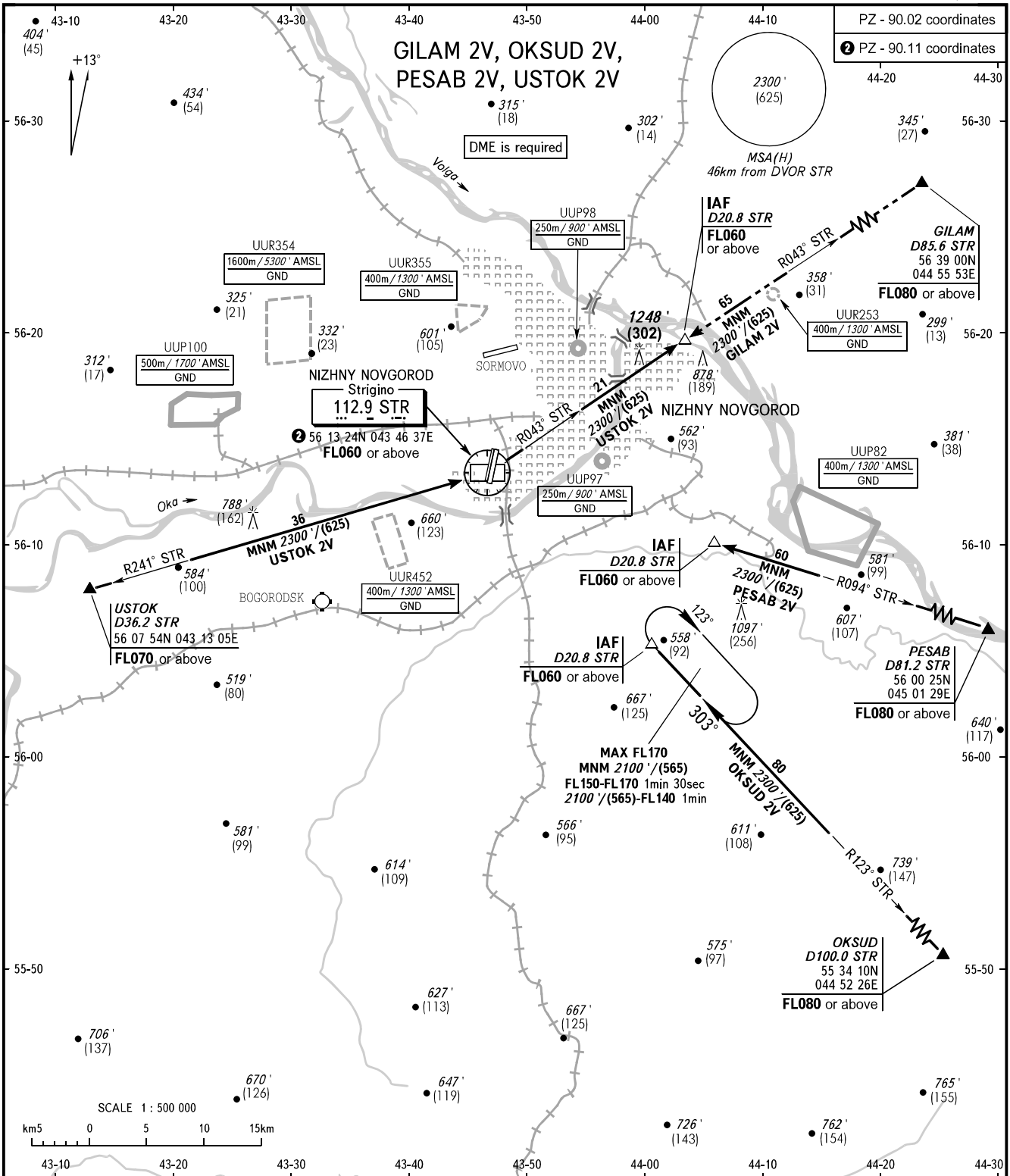


STANDARD ARRIVAL CHART
INSTRUMENT (STAR) - ICAO

NIZHNY NOVGOROD, RUSSIA
STRIGINO
RWY 18L/36R

TRANSITION
LEVEL: 1



NIZHNY APPROACH	124.700
NIZHNY RADAR	120.800
NIZHNY TOWER	120.400

- 1 TRANSITION LEVEL:
- FL060 when QNH is 1013 hPa (760mm mercury column) or above;
 - FL070 when QNH is 977 hPa (733mm mercury column) or above, but less than 1013 hPa (760mm mercury column);
 - FL080 when QNH is less than 977 hPa (733mm mercury column).

CHANGE: New chart