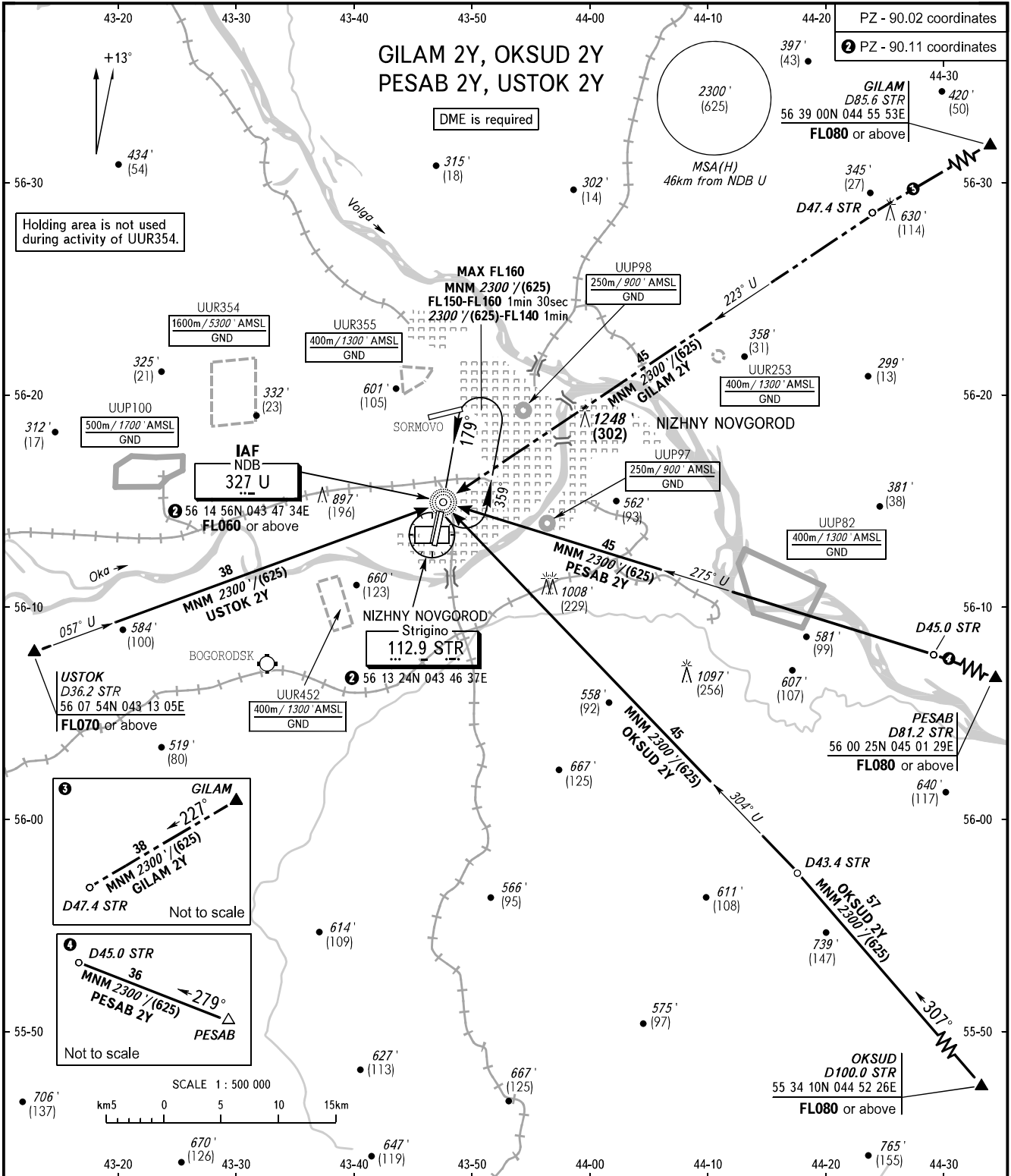


STANDARD ARRIVAL CHART  
INSTRUMENT (STAR) - ICAO

NIZHNY NOVGOROD, RUSSIA  
STRIGINO  
RWY 18L

TRANSITION  
LEVEL: 1



NIZHNY APPROACH	124.700
NIZHNY RADAR	120.800
NIZHNY TOWER	120.400

- 1 TRANSITION LEVEL:
- FL060 when QNH is 1013 hPa (760mm mercury column) or above;
  - FL070 when QNH is 977 hPa (733mm mercury column) or above, but less than 1013 hPa (760mm mercury column);
  - FL080 when QNH is less than 977 hPa (733mm mercury column).

BEARINGS AND TRACKS ARE MAGNETIC  
ALTITUDES IN FEET, HEIGHTS IN METRES  
ELEVATIONS IN FEET AND METRES  
DISTANCES IN KILOMETRES

Alt set: -QNH(QFE on req);  
-hPa(mm on req).

CHANGE: New chart