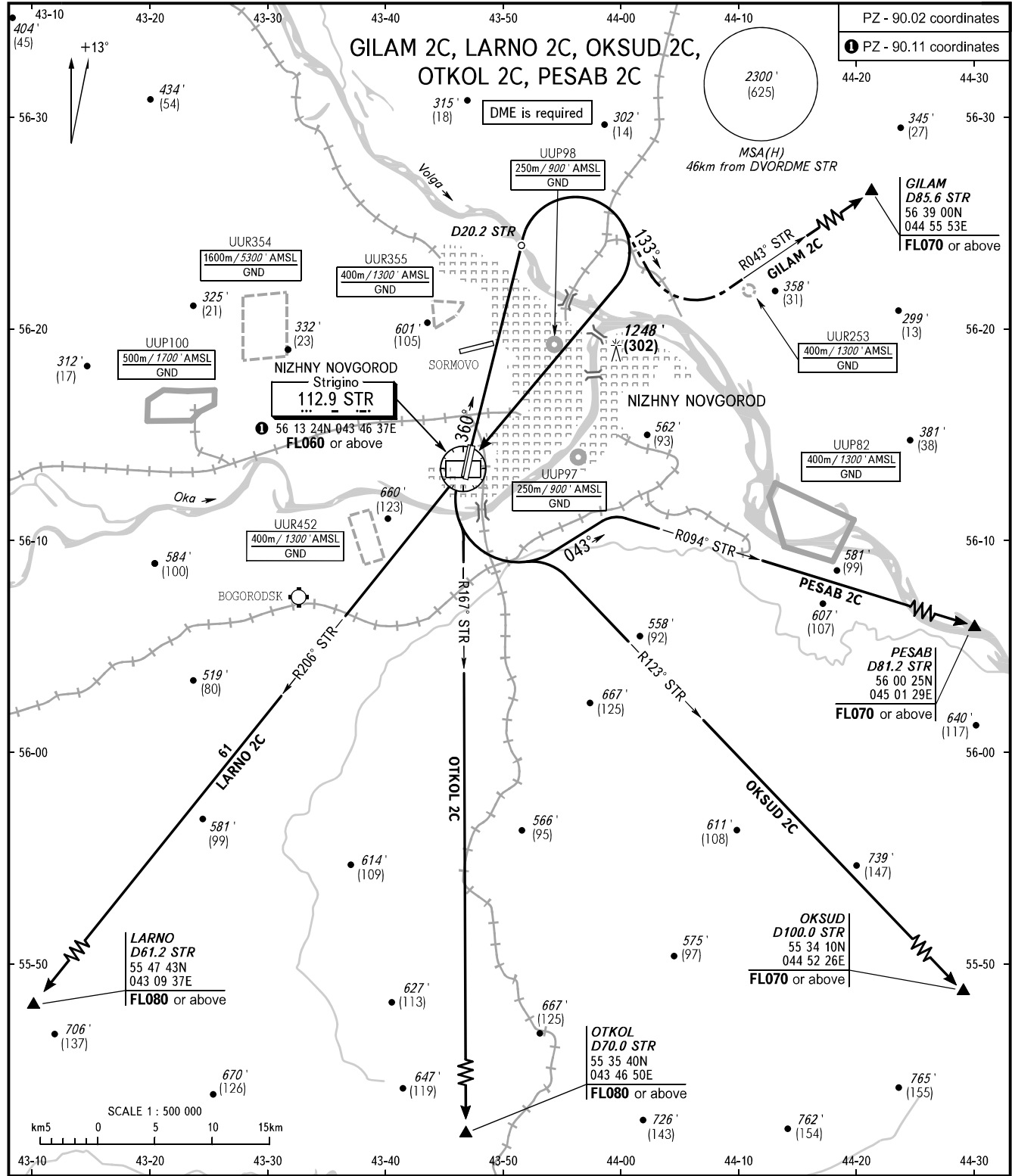


STANDARD DEPARTURE CHART
INSTRUMENT (SID) - ICAO

TRANSITION ALT: 5000'
TRANSITION HGT: (1450)

NIZHNY NOVGOROD, RUSSIA
STRIGINO
RWY 36R



NIZHNY TOWER	120.400	WARNING The minimum climb gradient required due to the airspace structure is 4.3% up to FL060 for SID LARNO 2C, OKSUD 2C, OTKOL 2C, PESAB 2C.
NIZHNY RADAR	120.800	
NIZHNY APPROACH	124.700	
BEARINGS AND TRACKS ARE MAGNETIC ALTITUDES IN FEET, HEIGHTS IN METRES ELEVATIONS IN FEET AND METRES DISTANCES IN KILOMETRES	Alt set: -QNH(QFE on req); -hPa(mm on req).	

CHANGE: New chart