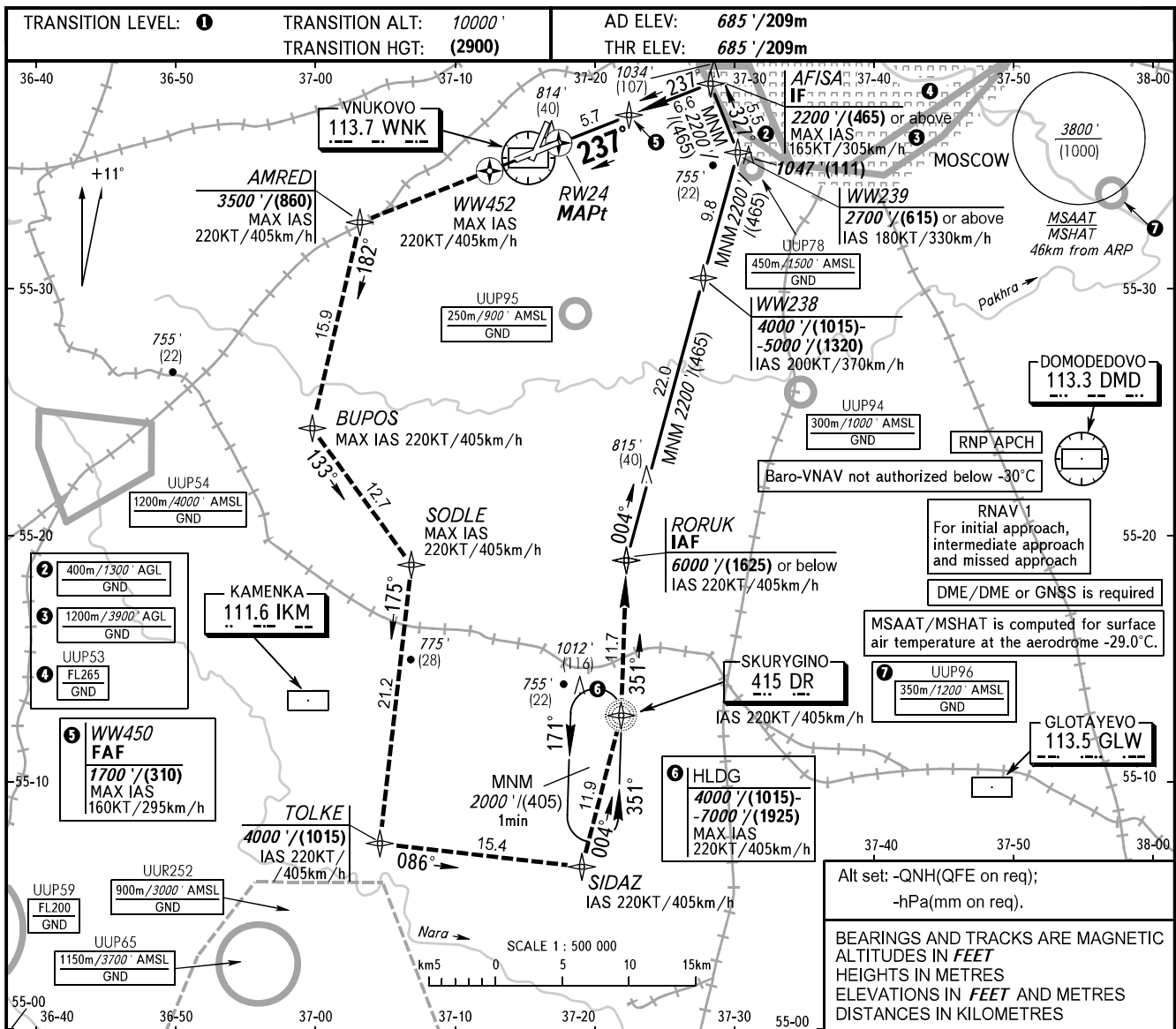


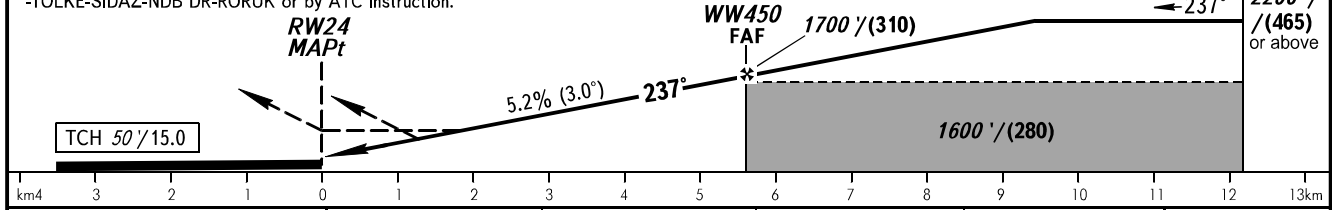
**INSTRUMENT  
APPROACH  
CHART - ICAO**

VNUKOVO TOWER **118.300**  
VNUKOVO RADAR **123.400 126.000 135.900**

**MOSCOW, RUSSIA  
VNUKOVO  
RNP RWY 24**



MISSED APPROACH Climb straight ahead to WW452, turn LEFT to AMRED climbing to 3500'/(860), then proceed to BUPOS-SODLE-TOLKE-SIDAZ-NDB DR-RORUK or by ATC instruction.	DIST to RW24	2.0	4.0	6.0	<b>AFISA</b> IF 2200'/(465) or above
	ALT/HGT	1080'/(125)	1420'/(225)	1760'/(330)	



OCA(H)		A	B	C	D
Straight-in Approach	<b>LNAV</b>	1070' (380')/(120)	1070' (380')/(120)	1070' (380')/(120)	1070' (380')/(120)
	<b>LNAV/VNAV</b>	949' (264')/(81)	961' (276')/(85)	999' (314')/(96)	1009' (324')/(99)

**1** TRANSITION LEVEL:  
 - FL110 when QNH is 1013 hPa (760mm mercury column) or above;  
 - FL120 when QNH is 977 hPa (733mm mercury column) or above, but less than 1013 hPa (760mm mercury column);  
 - FL130 when QNH is less than 977 hPa (733mm mercury column).

GROUND SPEED	km/h	150	180	210	240	270	300	330	360	390	420	450
RATE OF DESCENT	m/s	2.2	2.6	3.0	3.5	3.9	4.3	4.8	5.2	5.6	6.1	6.5
RATE OF DESCENT	ft/min	427	512	597	682	768	853	938	1024	1109	1194	1280