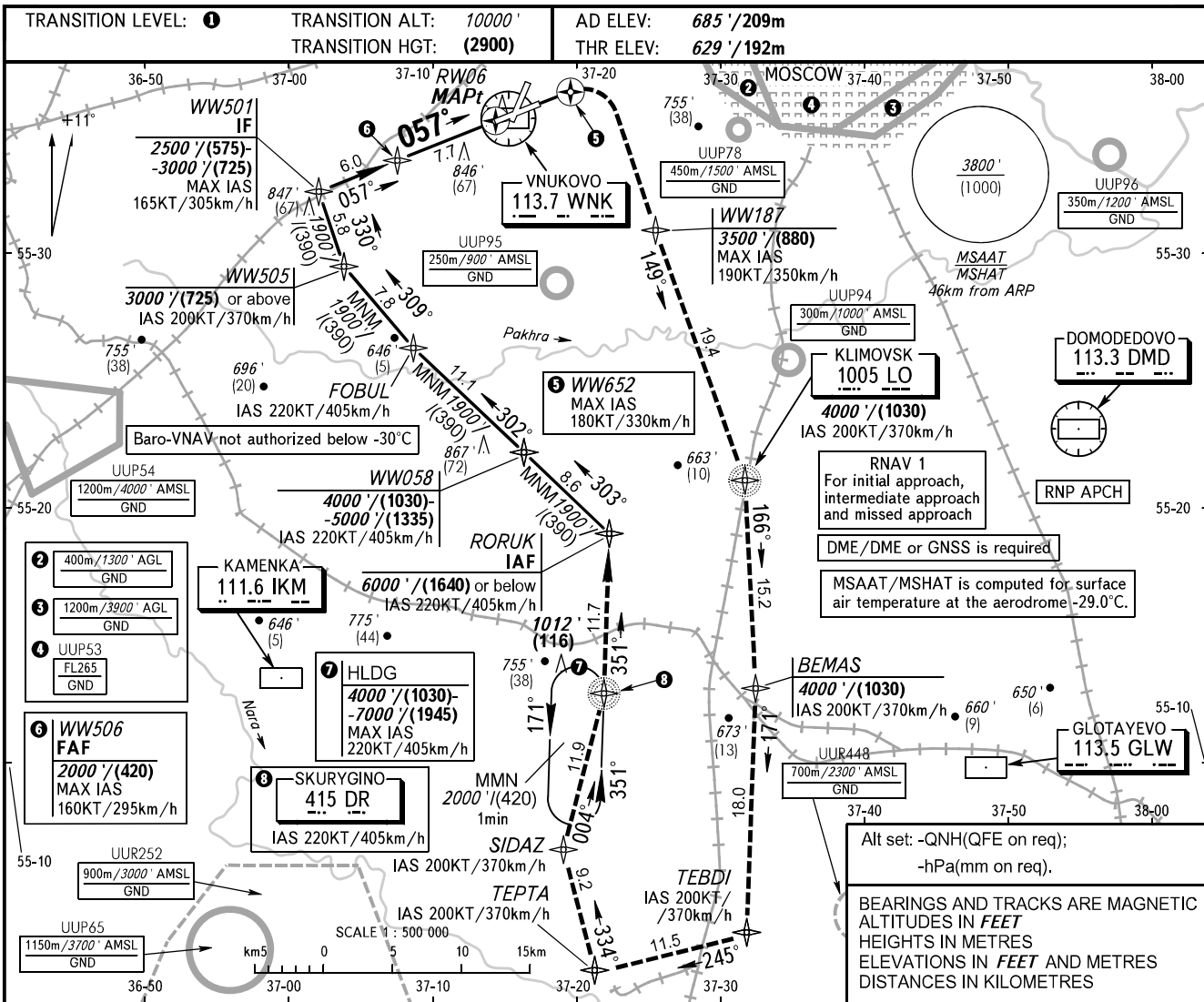


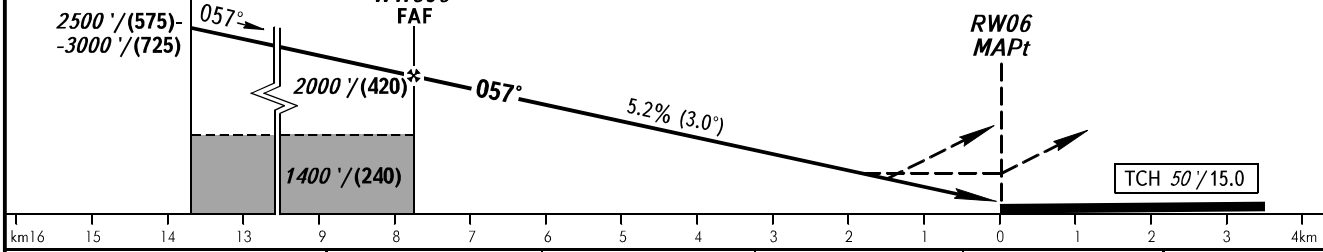
**INSTRUMENT
APPROACH
CHART - ICAO**

VNUKOVO TOWER **118.300**
VNUKOVO RADAR **123.400 126.000 135.900**

MOSCOW, RUSSIA
VNUKOVO
RNP RWY 06



MISSED APPROACH
Climb straight ahead to WW652, turn RIGHT to WW187 climbing to 3500' (880), then proceed to NDB LO-BEMAS-TEBDI-TEPTA-SIDAZ-NDB DR-RORUK or by ATC instruction.



OCA(H)		A	B	C	D
Straight-in Approach	LNAV	1000' (370')/(115)	1000' (370')/(115)	1000' (370')/(115)	1000' (370')/(115)
	LNAV/VNAV	950' (321')/(98)	963' (334')/(102)	971' (342')/(105)	981' (352')/(108)

TRANSITION LEVEL:
 - FL110 when QNH is 1013 hPa (760mm mercury column) or above;
 - FL120 when QNH is 977 hPa (733mm mercury column) or above, but less than 1013 hPa (760mm mercury column);
 - FL130 when QNH is less than 977 hPa (733mm mercury column).

GROUND SPEED	km/h	150	180	210	240	270	300	330	360	390	420	450
RATE OF DESCENT	m/s	2.2	2.6	3.0	3.5	3.9	4.3	4.8	5.2	5.6	6.1	6.5
RATE OF DESCENT	ft/min	427	512	597	682	768	853	938	1024	1109	1194	1280

CHANGE: New chart