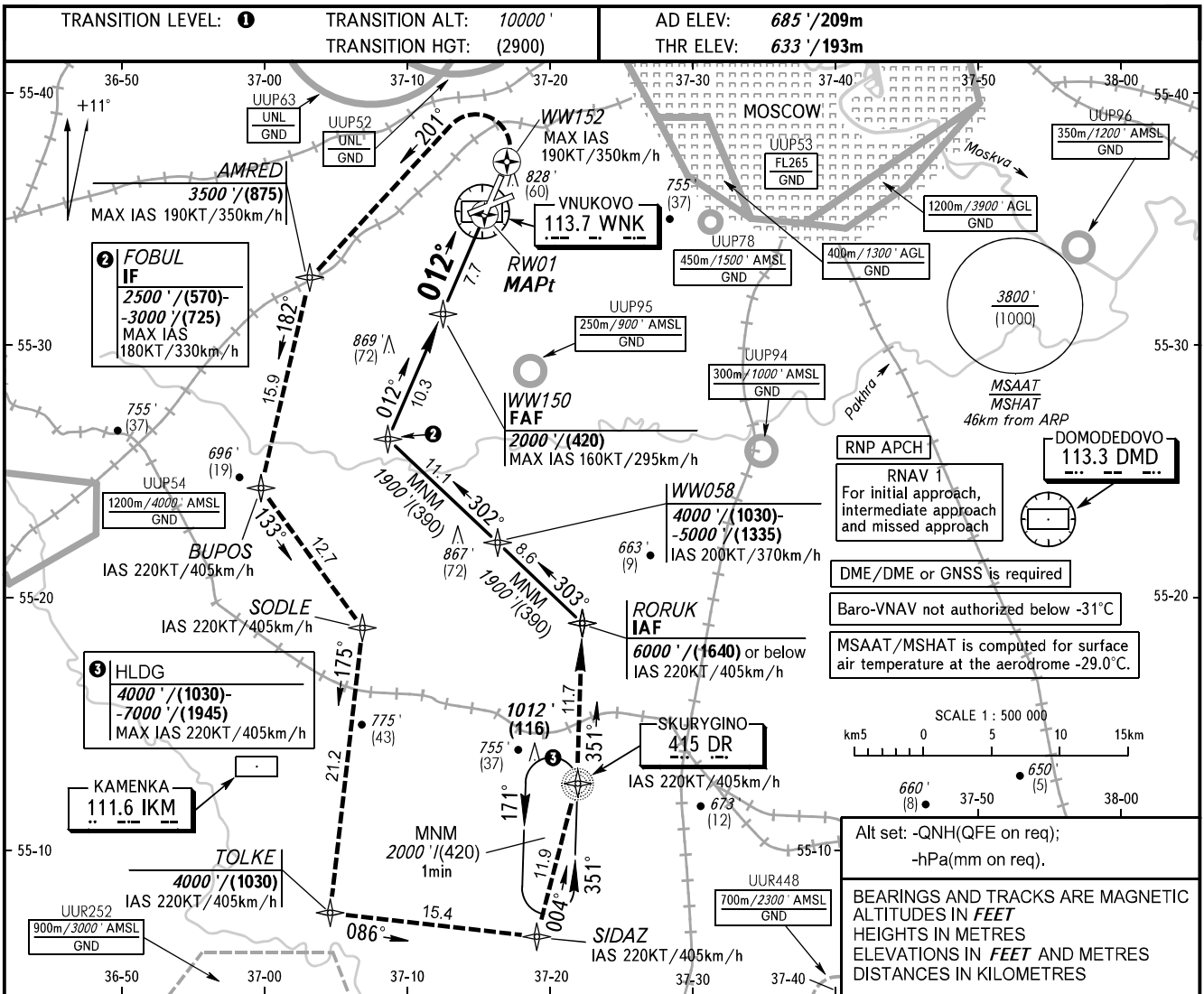


**INSTRUMENT
APPROACH
CHART - ICAO**

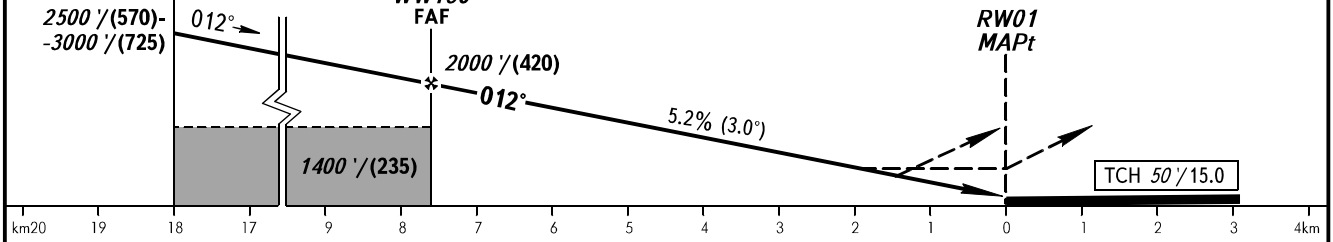
VNUKOVO TOWER **118.300**
VNUKOVO RADAR **123.400 126.000 135.900**

**MOSCOW, RUSSIA
VNUKOVO
RNP RWY 01**



FOBUL IF	DIST to RW01	8.0	6.0	4.0	2.0
	ALT/HGT	2050'/(435)	1710'/(330)	1370'/(225)	1030'/(125)

MISSED APPROACH
Climb straight ahead to WW152, turn LEFT to AMRED climbing to 3500'/(875), then proceed BUPOS-SODLE-TOLKE-SIDAZ-NDB DR-RORUK or by ATC instruction.



OCA(H)		A	B	C	D
Straight-in Approach	LNAV	1010' (380')/(115)	1010' (380')/(115)	1060' (420')/(135)	1060' (420')/(135)
	LNAV/VNAV	958' (325')/(100)	971' (338')/(104)	979' (346')/(106)	989' (356')/(109)

1 TRANSITION LEVEL:
 - FL110 when QNH is 1013 hPa (760mm mercury column) or above;
 - FL120 when QNH is 977 hPa (733mm mercury column) or above, but less than 1013 hPa (760mm mercury column);
 - FL130 when QNH is less than 977 hPa (733mm mercury column).

GROUND SPEED	km/h	150	180	210	240	270	300	330	360	390	420	450
RATE OF DESCENT	m/s	2.2	2.6	3.0	3.5	3.9	4.3	4.8	5.2	5.6	6.1	6.5
RATE OF DESCENT	ft/min	427	512	597	682	768	853	938	1024	1109	1194	1280

CHANGE: APCH PROFILE