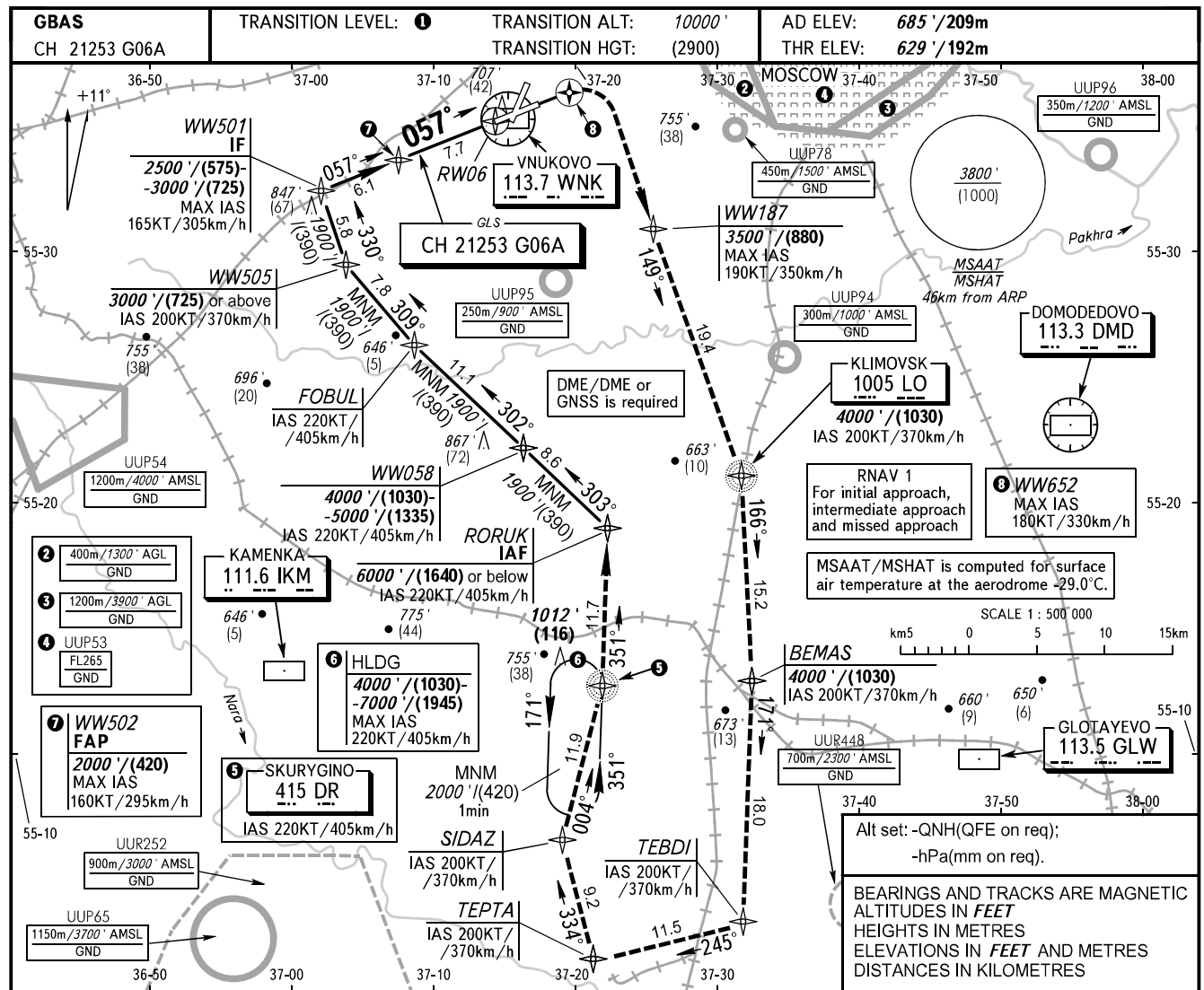


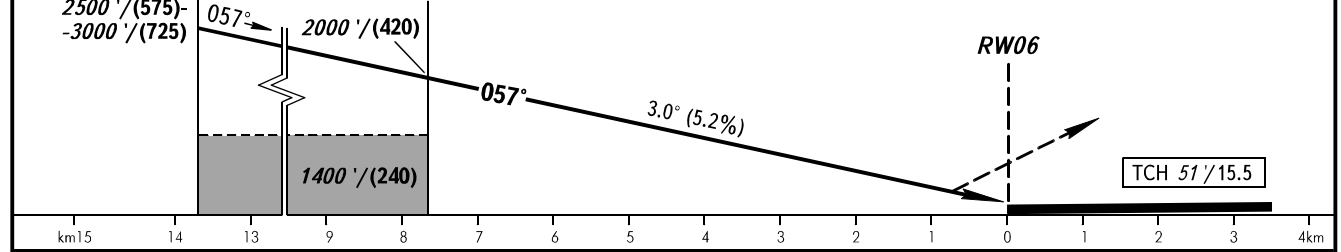
**INSTRUMENT  
APPROACH  
CHART - ICAO**

VNUKOVO TOWER **118.300**  
VNUKOVO RADAR **123.400 126.000 135.900**

**MOSCOW, RUSSIA**  
VNUKOVO  
GLS RWY 06



**MISSED APPROACH**  
Climb straight ahead to WW652, turn RIGHT to WW187 climbing to 3500'/(880), then proceed to NDB LO-BEMAS-TEBDI-TEPTA-SIDAZ-NDB DR-RORUK or by ATC instruction.



OCA(H)		A	B	C	D
Straight-in	<b>CAT I</b>	829' (200')/(60)	829' (200')/(60)	829' (200')/(60)	829' (200')/(60)
	Approach				
Circling					

**1 TRANSITION LEVEL:**  
- FL110 when QNH is 1013 hPa (760mm mercury column) or above;  
- FL120 when QNH is 977 hPa (733mm mercury column) or above, but less than 1013 hPa (760mm mercury column);  
- FL130 when QNH is less than 977 hPa (733mm mercury column).

GROUND SPEED	km/h	150	180	210	240	270	300	330	360	390	420	450
RATE OF DESCENT	m/s	2.2	2.6	3.0	3.5	3.9	4.3	4.8	5.2	5.6	6.1	6.5
RATE OF DESCENT	ft/min	427	512	597	682	768	853	938	1024	1109	1194	1280

CHANGE: New chart