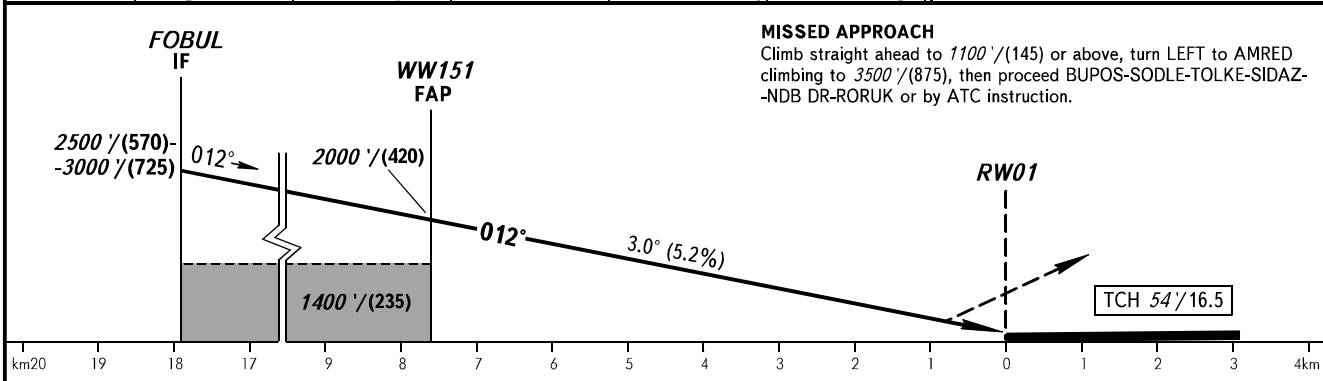
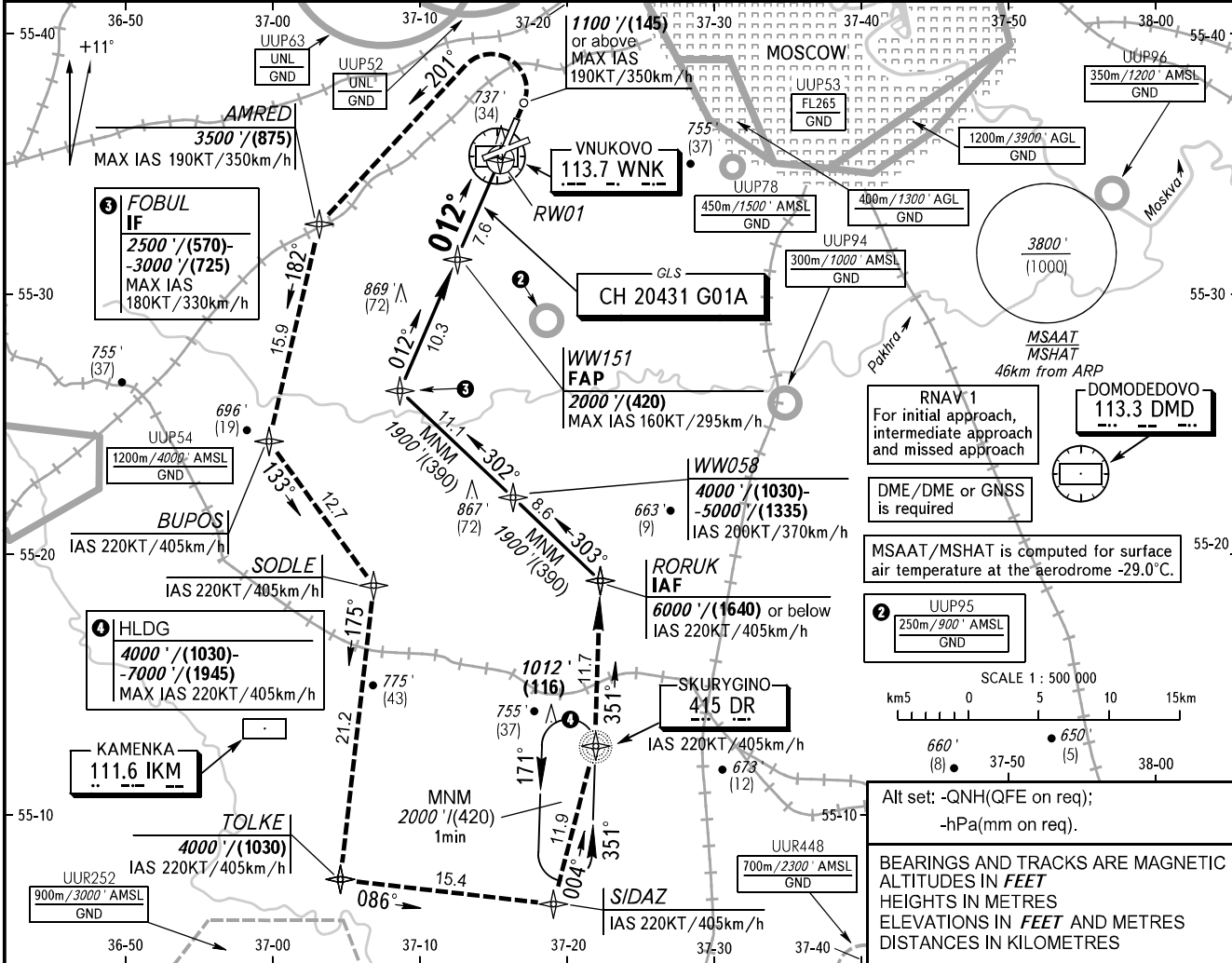


**INSTRUMENT  
APPROACH  
CHART - ICAO**

VNUKOVO TOWER **118.300**  
VNUKOVO RADAR **123.400 126.000 135.900**

**MOSCOW, RUSSIA  
VNUKOVO  
GLS RWY 01**

<b>GBAS</b> CH 20431 G01A	<b>TRANSITION LEVEL:</b> 1	<b>TRANSITION ALT:</b> 10000'	<b>AD ELEV:</b> 685' / 209m
		<b>TRANSITION HGT:</b> (2900)	<b>THR ELEV:</b> 633' / 193m



OCA(H)	A	B	C	D	1 TRANSITION LEVEL:											
Straight-in Approach	<b>CAT I</b>	833' (200') / (60)	833' (200') / (60)	833' (200') / (60)	833' (200') / (60)	- FL110 when QNH is 1013 hPa (760mm mercury column) or above; - FL120 when QNH is 977 hPa (733mm mercury column) or above, but less than 1013 hPa (760mm mercury column); - FL130 when QNH is less than 977 hPa (733mm mercury column).										
GROUND SPEED		km/h	150	180	210	240	270	300	330	360	390	420	450			
RATE OF DESCENT		m/s	2.2	2.6	3.0	3.5	3.9	4.3	4.8	5.2	5.6	6.1	6.5			
RATE OF DESCENT		ft / min	427	512	597	682	768	853	938	1024	1109	1194	1280			