

POKAG 3Y, POKAG 3Z, RILPO 3Y, RILPO 3Z, SUNUN 3Y, SUNUN 3Z

VNUKOVO TOWER	118.300
VNUKOVO RADAR	123.400 135.900
DOMODEDOVO RADAR	119.400 125.300 129.800
SHEREMETYEVO RADAR	118.100 122.700
MOSCOW APPROACH	118.950 118.550 127.200 128.000
	130.375 124.200 131.200 134.000

RNAV 1

DME/DME or GNSS is required

MSAAT/MSHAT is computed for surface air temperature at the aerodrome -29°C.

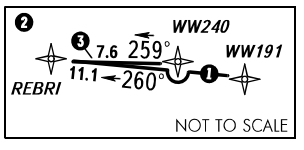
HGT is given relative to RWY 19 THR ELEV 634/193m.

Greater climb gradient required due to the airspace structure.

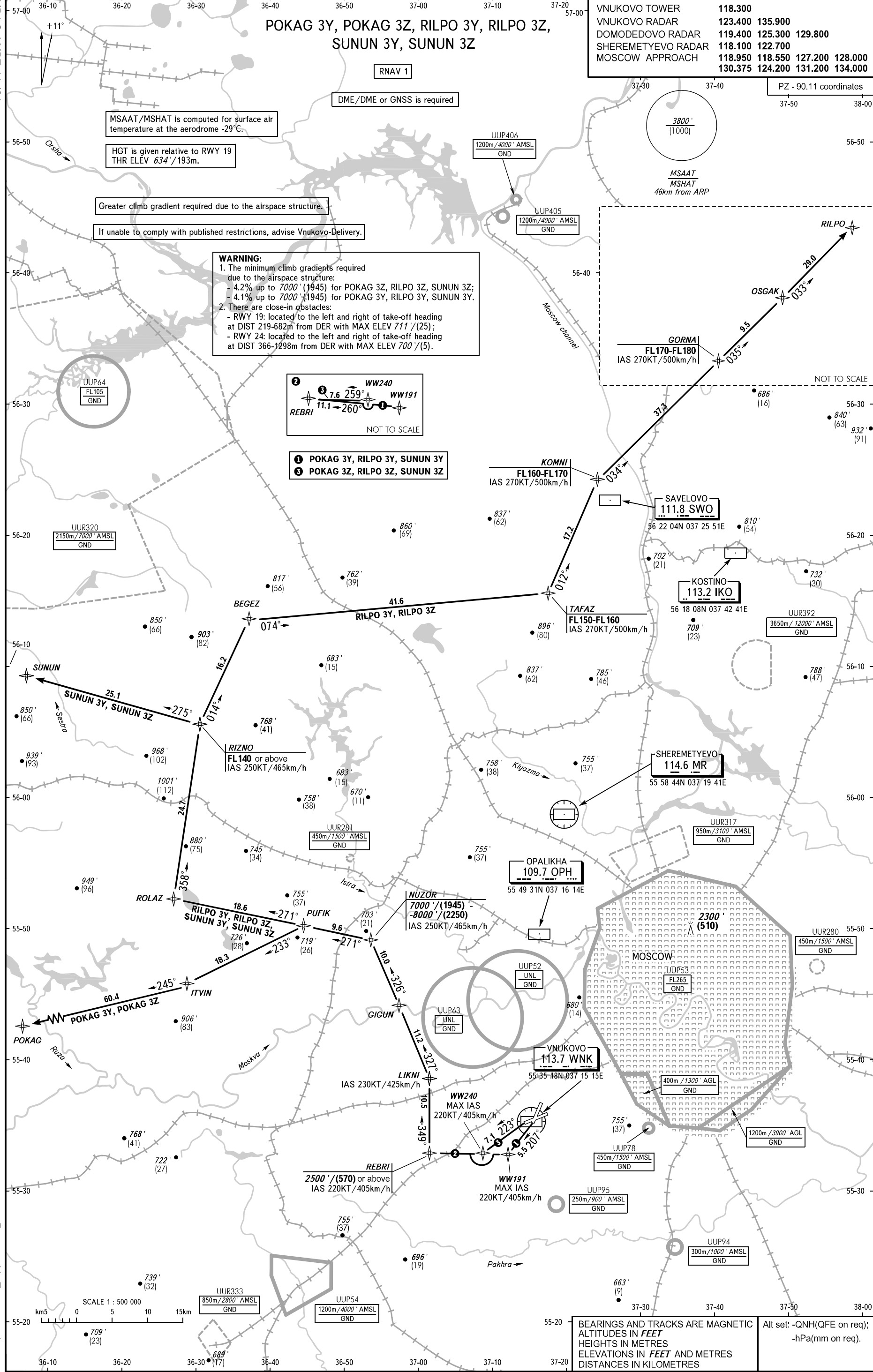
If unable to comply with published restrictions, advise Vnuково-Delivery.

WARNING:

- The minimum climb gradients required due to the airspace structure:
 - 4.2% up to 7000' (1945) for POKAG 3Z, RILPO 3Z, SUNUN 3Z;
 - 4.1% up to 7000' (1945) for POKAG 3Y, RILPO 3Y, SUNUN 3Y.
- There are close-in obstacles:
 - RWY 19: located to the left and right of take-off heading at DIST 219-682m from DER with MAX ELEV 711'/(25);
 - RWY 24: located to the left and right of take-off heading at DIST 366-1298m from DER with MAX ELEV 700'/(5).



- 1 POKAG 3Y, RILPO 3Y, SUNUN 3Y
- 2 POKAG 3Z, RILPO 3Z, SUNUN 3Z



UUR320
2150m/7000' AMSL
GND

UUP406
1200m/4000' AMSL
GND

UUP405
1200m/4000' AMSL
GND

UUP64
FL105
GND

UUR320
2150m/7000' AMSL
GND

UUR392
3650m/12000' AMSL
GND

UUR281
450m/1500' AMSL
GND

OPALIKHA
109.7 OPH

NUZOR
7000'/(1945) -
8000'/(2250)
IAS 250KT/465km/h

SHEREMETYEVO
114.6 MR

UUR317
950m/3100' AMSL
GND

UUR280
450m/1500' AMSL
GND

UUP63
UNL
GND

VNUKOVO
113.7 WNK

UUP53
FL265
GND

UUP78
450m/1500' AMSL
GND

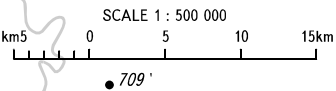
1200m/3900' AGL
GND

UUP95
250m/900' AMSL
GND

UUP94
300m/1000' AMSL
GND

UUR333
850m/2800' AMSL
GND

UUP54
1200m/4000' AMSL
GND



BEARINGS AND TRACKS ARE MAGNETIC
ALTITUDES IN FEET
HEIGHTS IN METRES
ELEVATIONS IN FEET AND METRES
DISTANCES IN KILOMETRES

Alt set: -QNH(QFE on req);
-hPa(mm on req).