

POKAG 3C, POKAG 3D, RILPO 3C, RILPO 3D, SUNUN 3C, SUNUN 3D

VNUKOVO TOWER	118.300
VNUKOVO RADAR	123.400 135.900
DOMODEDOVO RADAR	119.400 125.300 129.800
SHEREMETYEVO RADAR	118.100 122.700
MOSCOW APPROACH	118.950 118.550 127.200 128.000
	130.375 124.200 131.200 134.000

MSAAT/MSHAT is computed for surface air temperature at the aerodrome -29°C.

HGT is given relative to RWY 19 THR ELEV 634' / 193m.

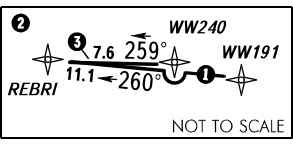
DME/DME or GNSS is required

Greater climb gradient required due to the airspace structure.

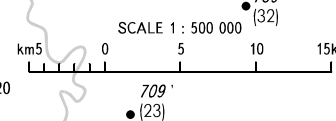
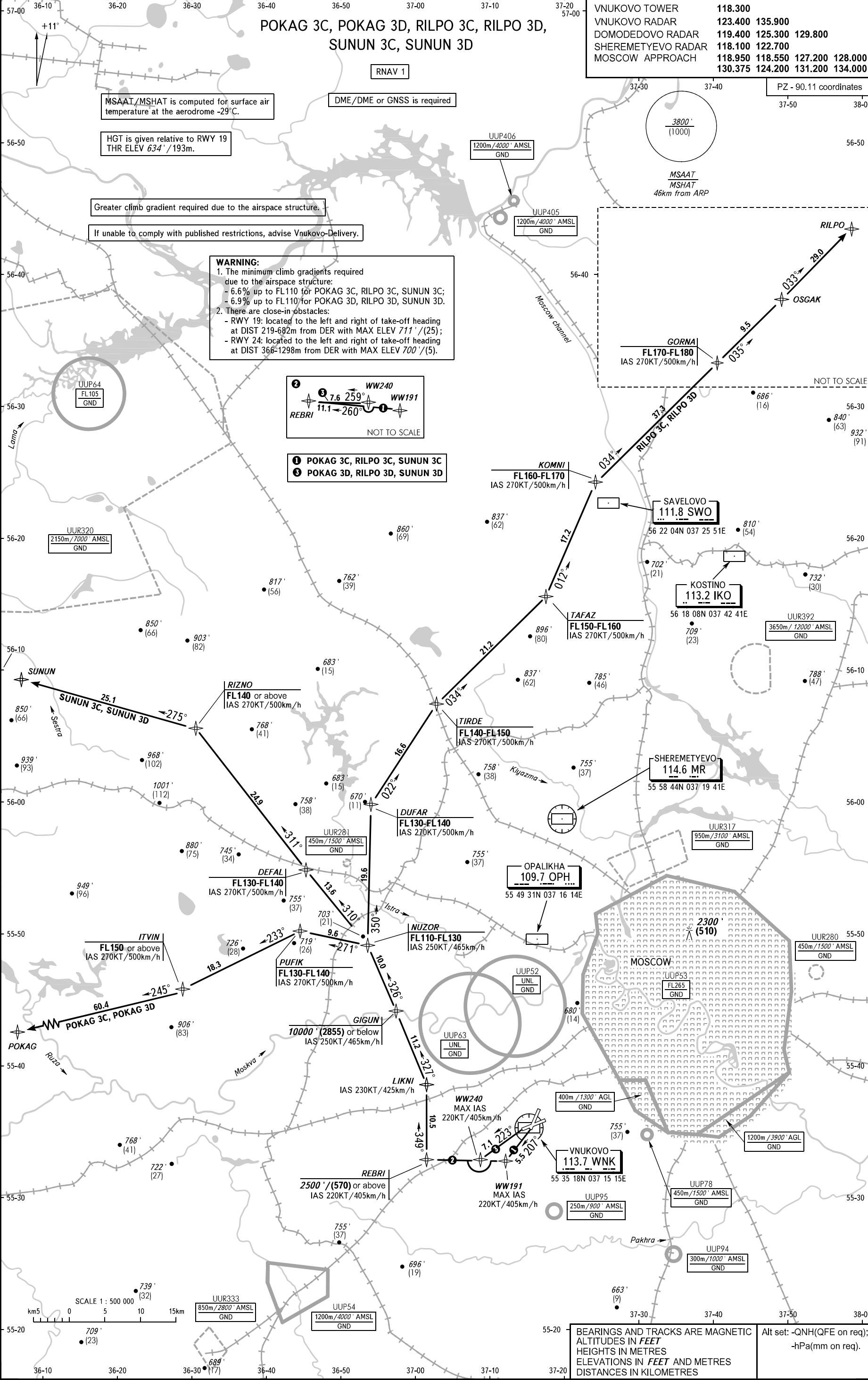
If unable to comply with published restrictions, advise Vnukovo-Delivery.

WARNING:

- The minimum climb gradients required due to the airspace structure:
 - 6.6% up to FL110 for POKAG 3C, RILPO 3C, SUNUN 3C;
 - 6.9% up to FL110 for POKAG 3D, RILPO 3D, SUNUN 3D.
- There are close-in obstacles:
 - RWY 19: located to the left and right of take-off heading at DIST 219-682m from DER with MAX ELEV 711' / (25);
 - RWY 24: located to the left and right of take-off heading at DIST 366-1298m from DER with MAX ELEV 700' / (5).



- 1 POKAG 3C, RILPO 3C, SUNUN 3C
- 2 POKAG 3D, RILPO 3D, SUNUN 3D



BEARINGS AND TRACKS ARE MAGNETIC
ALTITUDES IN FEET
HEIGHTS IN METRES
ELEVATIONS IN FEET AND METRES
DISTANCES IN KILOMETRES

Alt set: -QN(H)(QFE on req);
-hPa(mm on req).