

VNUKOVO TOWER	118.300
VNUKOVO RADAR	123.400 135.900
DOMODEDOVO RADAR	119.400 125.300 129.800
SHEREMETYEVO RADAR	118.100 122.700
MOSCOW APPROACH	118.950 118.550 127.200 128.000
	130.375 124.200 131.200 134.000

PZ - 90.11 coordinates
 ① PZ - 90.02 coordinates

EMGAS 3Y, EMGAS 3Z,
TOGMO 3Y, TOGMO 3Z

DME/DME or GNSS is required

RNAV 1

3800'
(1000)

MSAAT
MSHAT
46km from ARP

CHULKOVO
109.2 LP

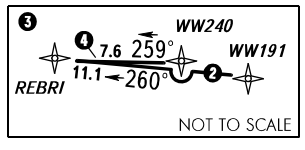
① 55 33 10N 038 02 08E

DOMODEDOVO
113.3 DMD

55 23 18N 037 54 42E

WARNING:
 1. The minimum climb gradient required due to the airspace structure:
 - 3.5% up to 5000'/(1335) for all SID.
 2. There are close-in obstacles:
 - RWY 19: located to the left and right of take-off heading at DIST 219-682m from DER with MAX ELEV 711'/(25);
 - RWY 24: located to the left and right of take-off heading at DIST 366-1298m from DER with MAX ELEV 700'/(5).

① EMGAS 3Z, TOGMO 3Z
 ② EMGAS 3Y, TOGMO 3Y



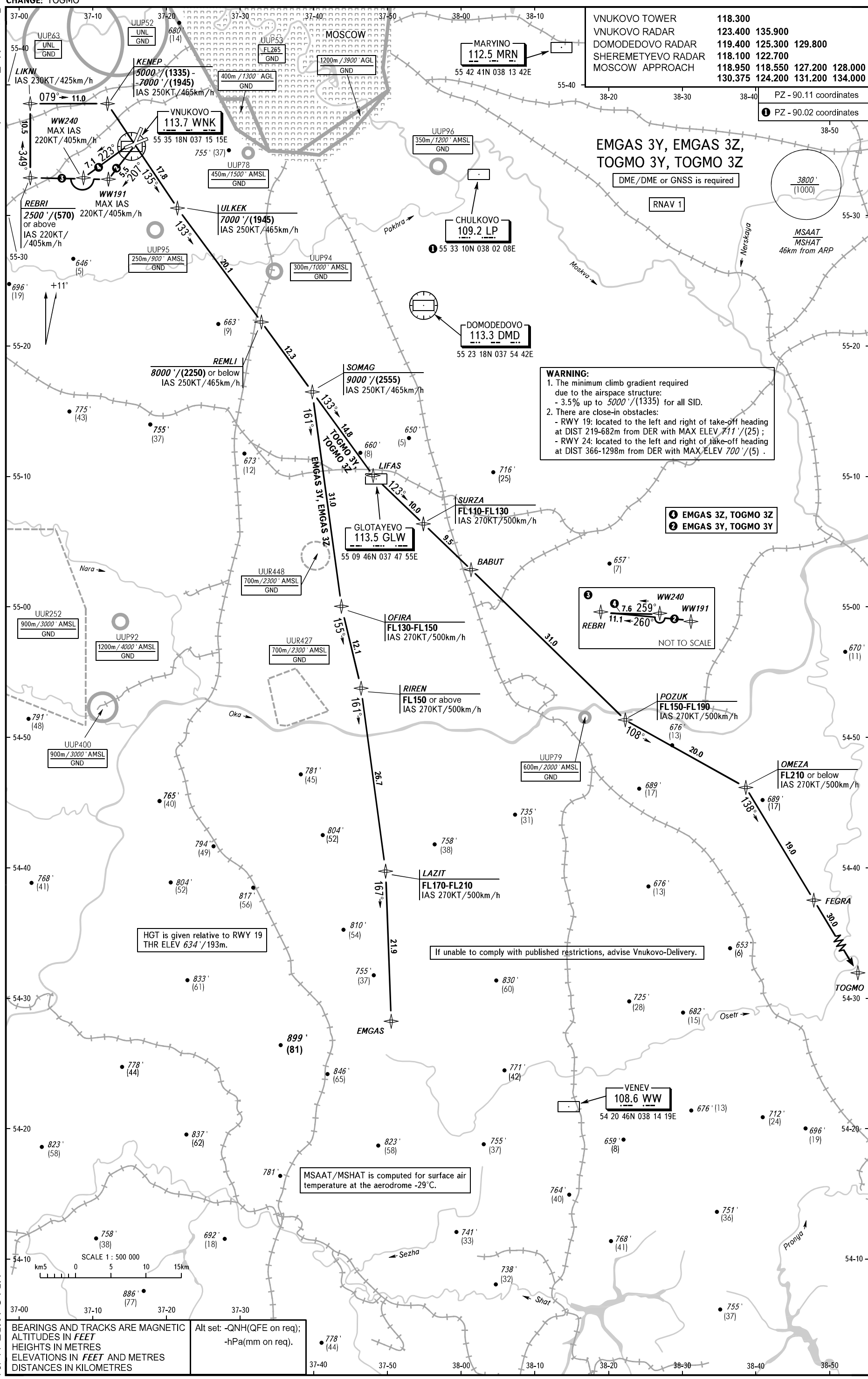
POZUK
FL150-FL190
IAS 270KT/500km/h

OMEZA
FL210 or below
IAS 270KT/500km/h

LAZIT
FL170-FL210
IAS 270KT/500km/h

VENEV
108.6 WW

54 20 46N 038 14 19E



HGT is given relative to RWY 19
THR ELEV 634'/193m.

If unable to comply with published restrictions, advise Vnukovo-Delivery.

MSAAT/MSHAT is computed for surface air
temperature at the aerodrome -29°C.

SCALE 1: 500 000
0 5 10 15 km

BEARINGS AND TRACKS ARE MAGNETIC
ALTITUDES IN FEET
HEIGHTS IN METRES
ELEVATIONS IN FEET AND METRES
DISTANCES IN KILOMETRES

Alt set: -QNH(QFE on req);
-hPa(mm on req).