

VNUKOVO TOWER	118.300
VNUKOVO RADAR	123.400 135.900
DOMODEDOVO RADAR	119.400 125.300 129.800
SHEREMETYEVO RADAR	118.100 122.700
MOSCOW APPROACH	118.950 118.550 127.200 128.000
	130.375 124.200 131.200 134.000

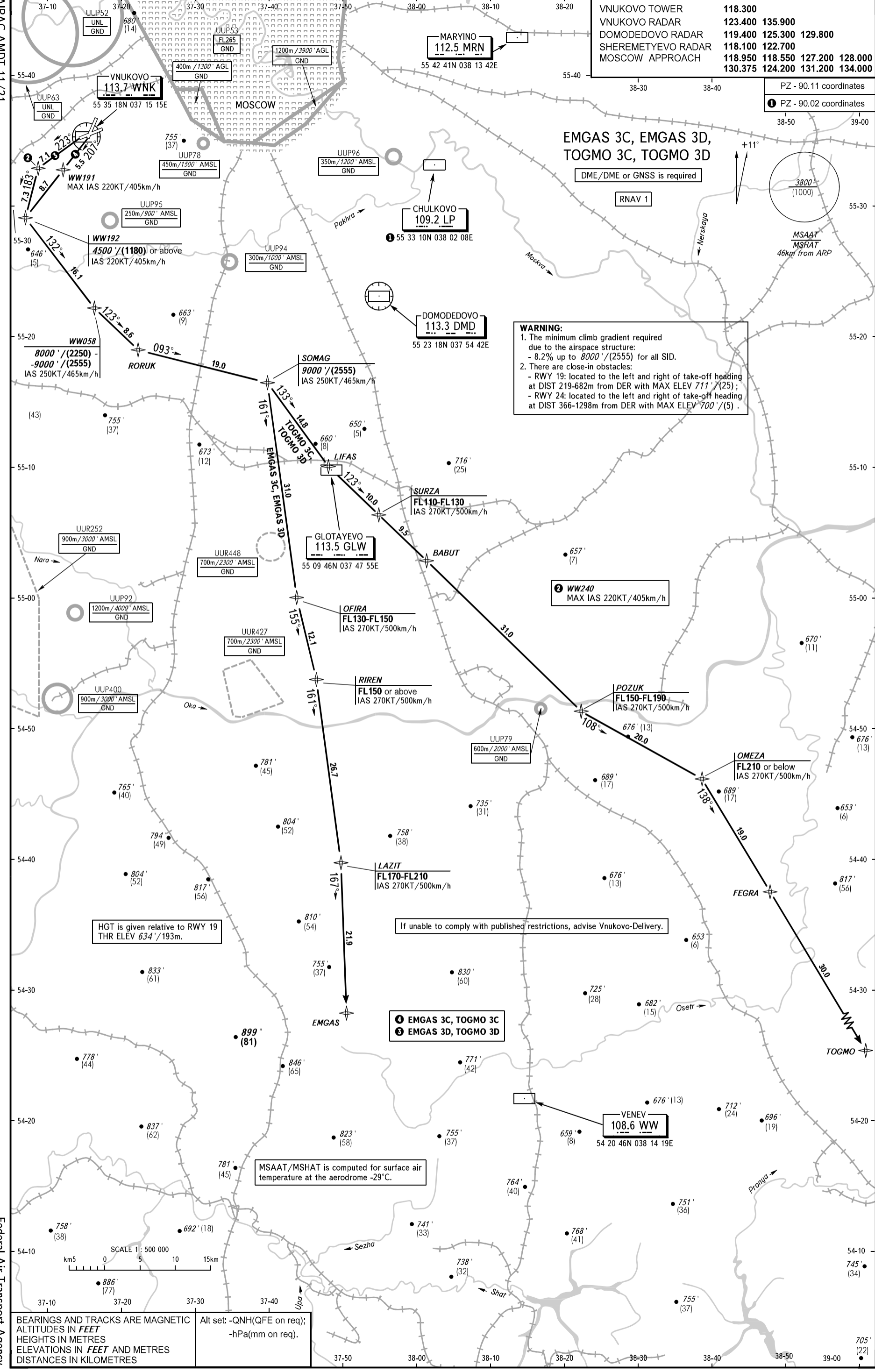
PZ - 90.11 coordinates
 ① PZ - 90.02 coordinates

EMGAS 3C, EMGAS 3D,
TOGMO 3C, TOGMO 3D

DME/DME or GNSS is required

RNAV 1

WARNING:
 1. The minimum climb gradient required due to the airspace structure:
 - 8.2% up to 8000'/(2555) for all SID.
 2. There are close-in obstacles:
 - RWY 19: located to the left and right of take-off heading at DIST 219-682m from DER with MAX ELEV 711'/(25);
 - RWY 24: located to the left and right of take-off heading at DIST 366-1298m from DER with MAX ELEV 700'/(5).

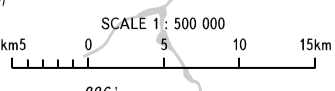


HGT is given relative to RWY 19
THR ELEV 634' / 193m.

If unable to comply with published restrictions, advise Vnukovo-Delivery.

① EMGAS 3C, TOGMO 3C
 ② EMGAS 3D, TOGMO 3D

MSAAT/MSHAT is computed for surface air temperature at the aerodrome -29°C.



BEARINGS AND TRACKS ARE MAGNETIC
 ALTITUDES IN FEET
 HEIGHTS IN METRES
 ELEVATIONS IN FEET AND METRES
 DISTANCES IN KILOMETRES

Alt set: -QNH(QFE on req);
 -hPa(mm on req).