

VNUKOVO TOWER	118.300
VNUKOVO RADAR	123.400 135.900
DOMODEDOVO RADAR	119.400 125.300 129.800
SHEREMETYEVO RADAR	118.100 122.700
MOSCOW APPROACH	118.950 118.550 127.200 128.000
	130.375 124.200 131.200 134.000

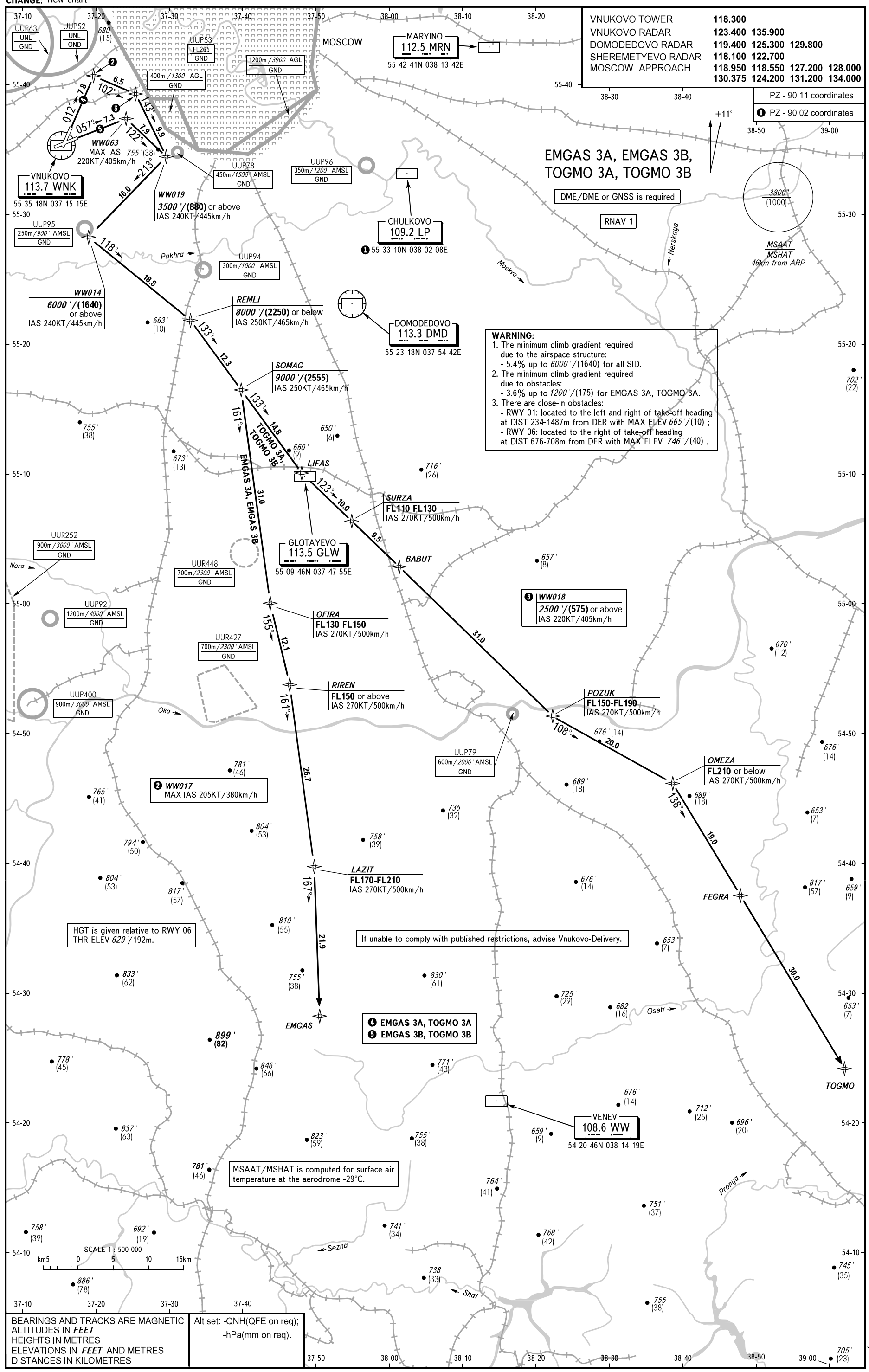
PZ - 90.11 coordinates
 ① PZ - 90.02 coordinates

**EMGAS 3A, EMGAS 3B,
TOGMO 3A, TOGMO 3B**

DME/DME or GNSS is required

RNAV 1

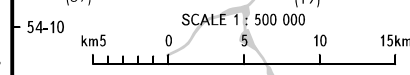
WARNING:
 1. The minimum climb gradient required due to the airspace structure:
 - 5.4% up to 6000'/(1640) for all SID.
 2. The minimum climb gradient required due to obstacles:
 - 3.6% up to 1200'/(175) for EMGAS 3A, TOGMO 3A.
 3. There are close-in obstacles:
 - RWY 01: located to the left and right of take-off heading at DIST 234-1487m from DER with MAX ELEV 665'/(10);
 - RWY 06: located to the right of take-off heading at DIST 676-708m from DER with MAX ELEV 746'/(40).



HGT is given relative to RWY 06
THR ELEV 629'/192m.

If unable to comply with published restrictions, advise Vnuково-Delivery.

MSAAT/MSHAT is computed for surface air
temperature at the aerodrome -29°C.



BEARINGS AND TRACKS ARE MAGNETIC
ALTITUDES IN FEET
HEIGHTS IN METRES
ELEVATIONS IN FEET AND METRES
DISTANCES IN KILOMETRES

Alt set: -QNH(QFE on req);
-hPa(mm on req).