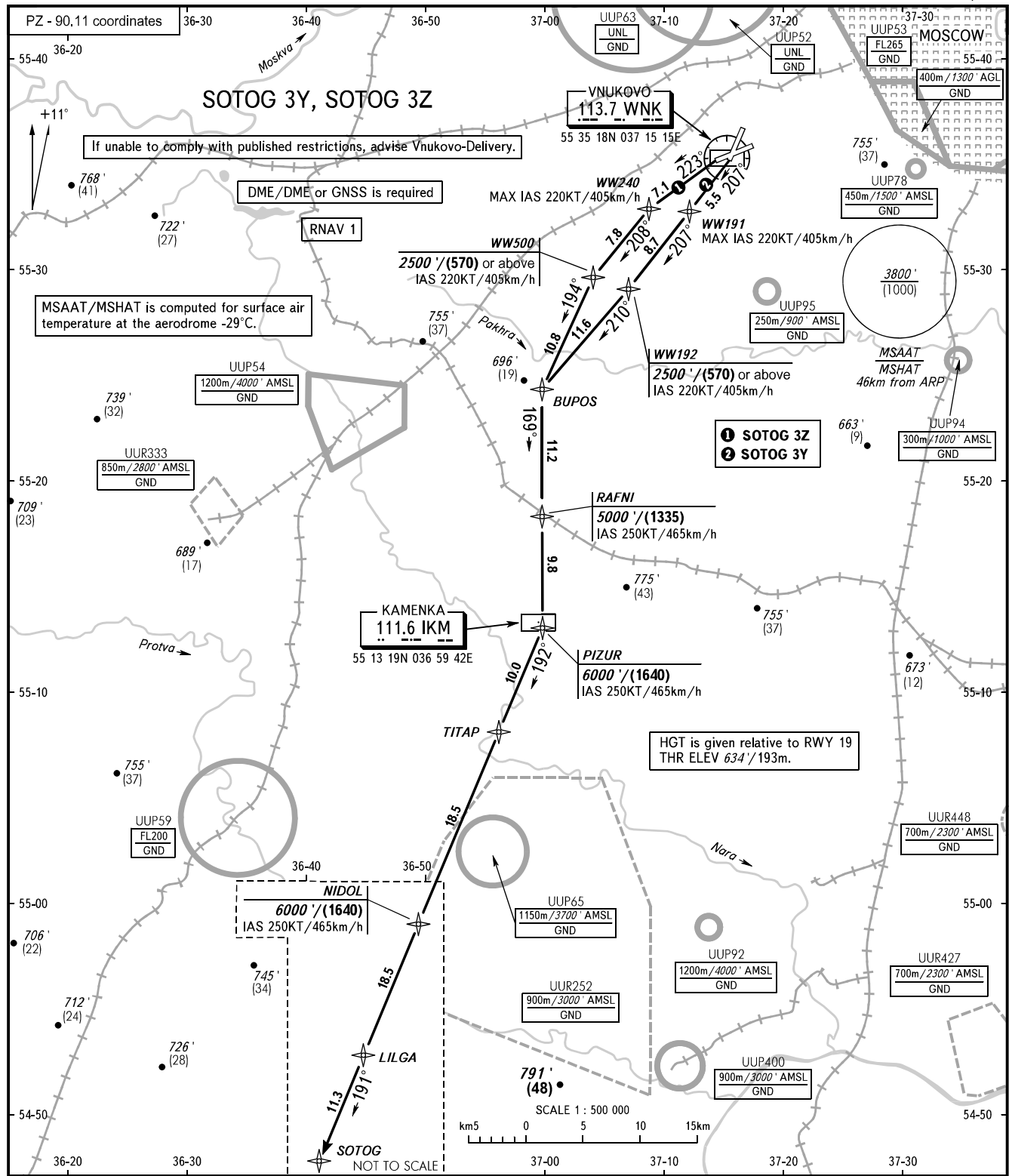


STANDARD DEPARTURE CHART  
INSTRUMENT (SID) - ICAO

MOSCOW, RUSSIA  
VNUKOVO  
RNAV RWY 19, 24

TRANSITION ALT: **10000'**  
TRANSITION HGT: **(2900)**



VNUKOVO TOWER	118.300			
VNUKOVO RADAR	123.400	135.900		
DOMODEDOVO RADAR	119.400	125.300	129.800	
SHEREMETYEVO RADAR	118.100	122.700		
MOSCOW APPROACH	118.950	118.550	127.200	128.000
	130.375	124.200	131.200	134.000

**WARNING:**

- The minimum climb gradient required due to the airspace structure:
  - 4.2% up to 2500'/(570) for all SID.
- There are close-in obstacles:
  - RWY 19: located to the left and right of take-off heading at DIST 219-682m from DER with MAX ELEV 711'/(25);
  - RWY 24: located to the left and right of take-off heading at DIST 366-1298m from DER with MAX ELEV 700'/(5).

BEARINGS AND TRACKS ARE MAGNETIC  
ALTITUDES IN FEET  
HEIGHTS IN METRES  
ELEVATIONS IN FEET AND METRES  
DISTANCES IN KILOMETRES

Alt set: -QNH(QFE on req);  
-hPa(mm on req).