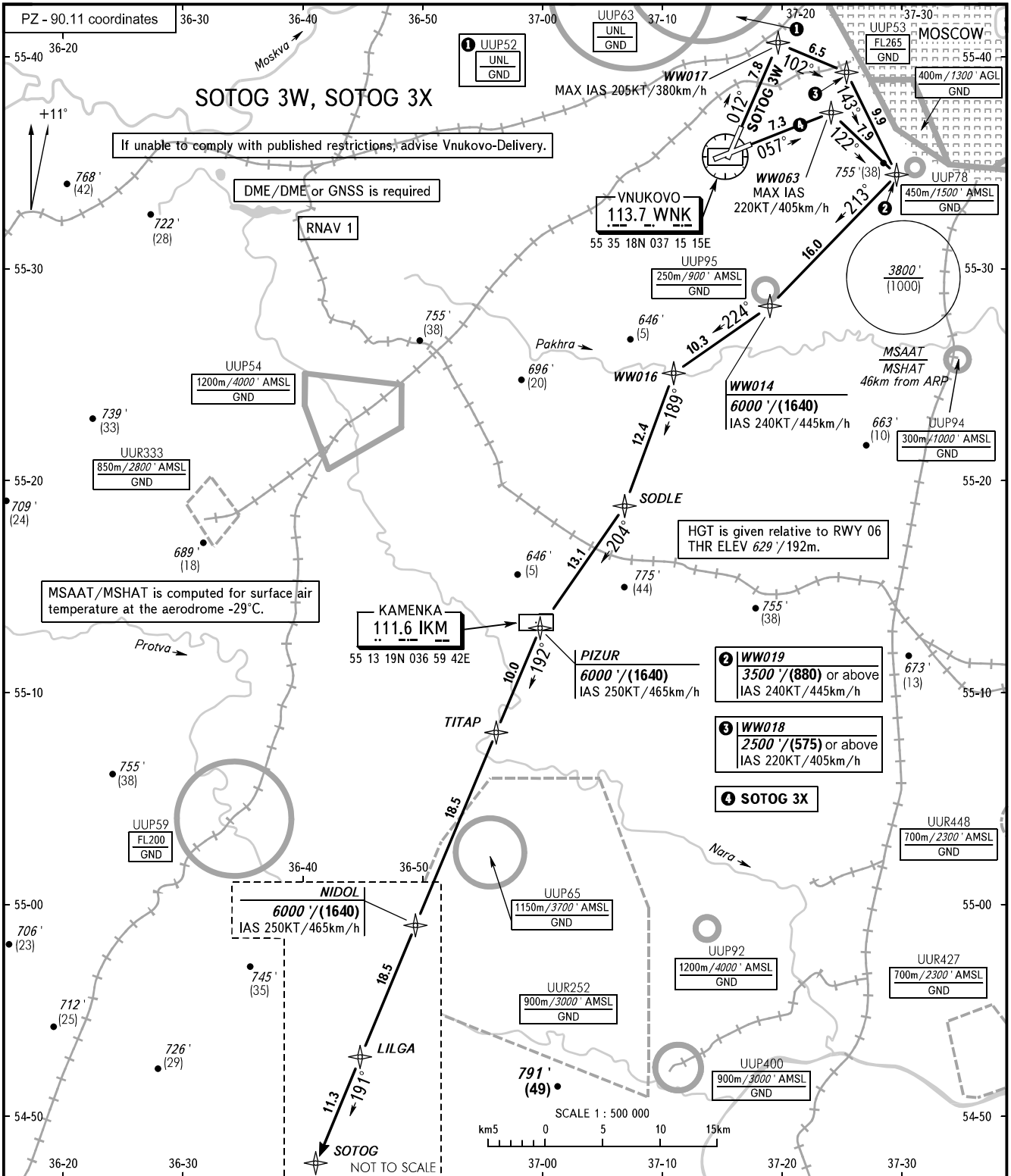


STANDARD DEPARTURE CHART
INSTRUMENT (SID) - ICAO

MOSCOW, RUSSIA
VNUKOVO
RNAV RWY 01, 06

TRANSITION ALT: **10000'**
TRANSITION HGT: **(2900)**



VNUKOVO TOWER	118.300
VNUKOVO RADAR	123.400 135.900
DOMODEDOVO RADAR	119.400 125.300 129.800
SHEREMETYEVO RADAR	118.100 122.700
MOSCOW APPROACH	118.950 118.550 127.200 128.000 130.375 124.200 131.200 134.000

- WARNING:**
- The minimum climb gradient required due to the airspace structure:
 - 4.1% up to 6000'/(1640) for SOTOG 3W.
 - The minimum climb gradient required due to obstacles:
 - 3.6% up to 1200'/(175) for SOTOG 3W.
 - There are close-in obstacles:
 - RWY 01: located to the left and right of take-off heading at DIST 234-1487m from DER with MAX ELEV 665'/(10);
 - RWY 06: located to the right of take-off heading at DIST 676-708m from DER with MAX ELEV 746'/(40).

BEARINGS AND TRACKS ARE MAGNETIC
ALTITUDES IN FEET
HEIGHTS IN METRES
ELEVATIONS IN FEET AND METRES
DISTANCES IN KILOMETRES

Alt set: -QNH(QFE on req);
-hPa(mm on req).

CHANGE: New chart