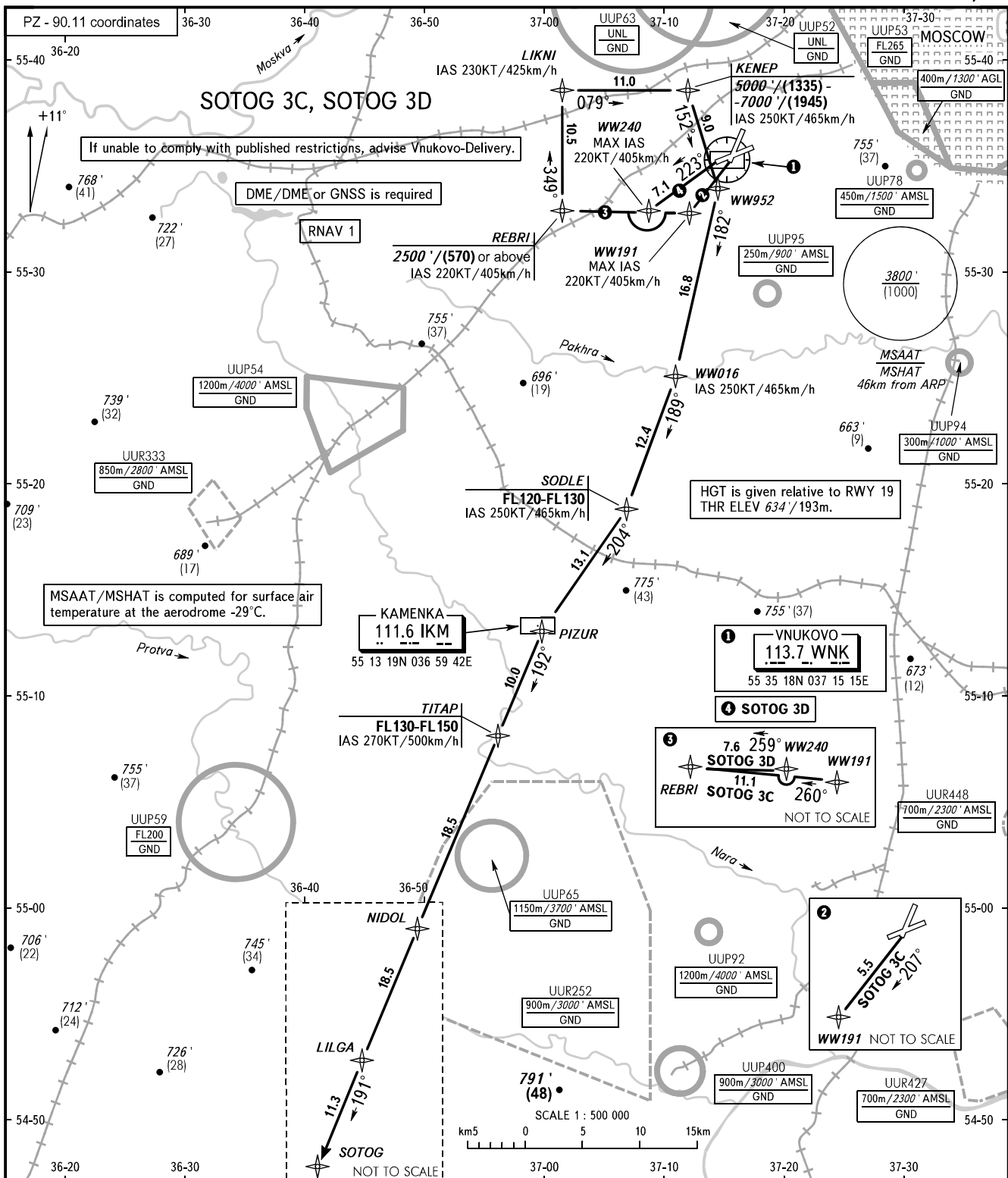


STANDARD DEPARTURE CHART
INSTRUMENT (SID) - ICAO

MOSCOW, RUSSIA
VNUKOVO
RNAV RWY 19, 24

TRANSITION ALT: **10000'**
TRANSITION HGT: **(2900)**



VNUKOVO TOWER	118.300
VNUKOVO RADAR	123.400 135.900
DOMODEDOVO RADAR	119.400 125.300 129.800
SHEREMETYEVO RADAR	118.100 122.700
MOSCOW APPROACH	118.950 118.550 127.200 128.000 130.375 124.200 131.200 134.000

WARNING:

- The minimum climb gradient required due to the airspace structure:
 - 5.0% up to FL120 for all SID.
- There are close-in obstacles:
 - RWY 19: located to the left and right of take-off heading at DIST 219-682m from DER with MAX ELEV 711'/(25);
 - RWY 24: located to the left and right of take-off heading at DIST 366-1298m from DER with MAX ELEV 700'/(5).

BEARINGS AND TRACKS ARE MAGNETIC
ALTITUDES IN **FEET**
HEIGHTS IN METRES
ELEVATIONS IN **FEET** AND METRES
DISTANCES IN KILOMETRES

Alt set: -QNH(QFE on req);
-hPa(mm on req).