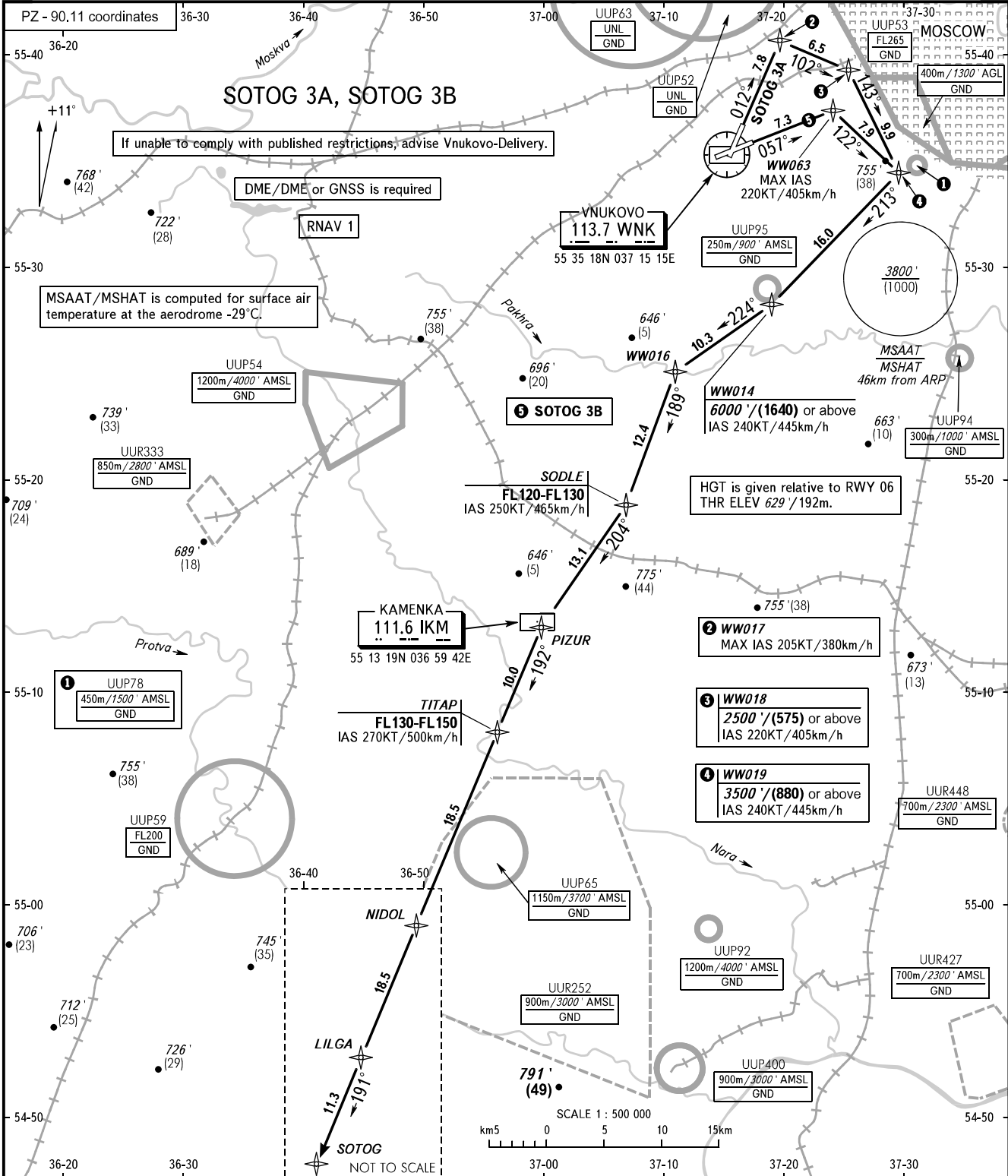


STANDARD DEPARTURE CHART
INSTRUMENT (SID) - ICAO

MOSCOW, RUSSIA
VNUKOVO
RNAV RWY 01, 06

TRANSITION ALT: **10000'**
TRANSITION HGT: **(2900)**



VNUKOVO TOWER	118.300
VNUKOVO RADAR	123.400 135.900
DOMODEDOVO RADAR	119.400 125.300 129.800
SHEREMETYEVO RADAR	118.100 122.700
MOSCOW APPROACH	118.950 118.550 127.200 128.000 130.375 124.200 131.200 134.000

BEARINGS AND TRACKS ARE MAGNETIC ALTITUDES IN FEET HEIGHTS IN METRES ELEVATIONS IN FEET AND METRES DISTANCES IN KILOMETRES	Alt set: -QNH(QFE on req); -hPa(mm on req).
--	--

- WARNING:**
- The minimum climb gradient required due to the airspace structure:
 - 6.5% up to FL120 for all SID.
 - The minimum climb gradient required due to obstacles:
 - 3.6% up to 1200'/(175) for SOTOG 3A.
 - There are close-in obstacles:
 - RWY 01: located to the left and right of take-off heading at DIST 234-1487m from DER with MAX ELEV 665'/(10);
 - RWY 06: located to the right of take-off heading at DIST 676-708m from DER with MAX ELEV 746'/(40).

CHANGE: New chart