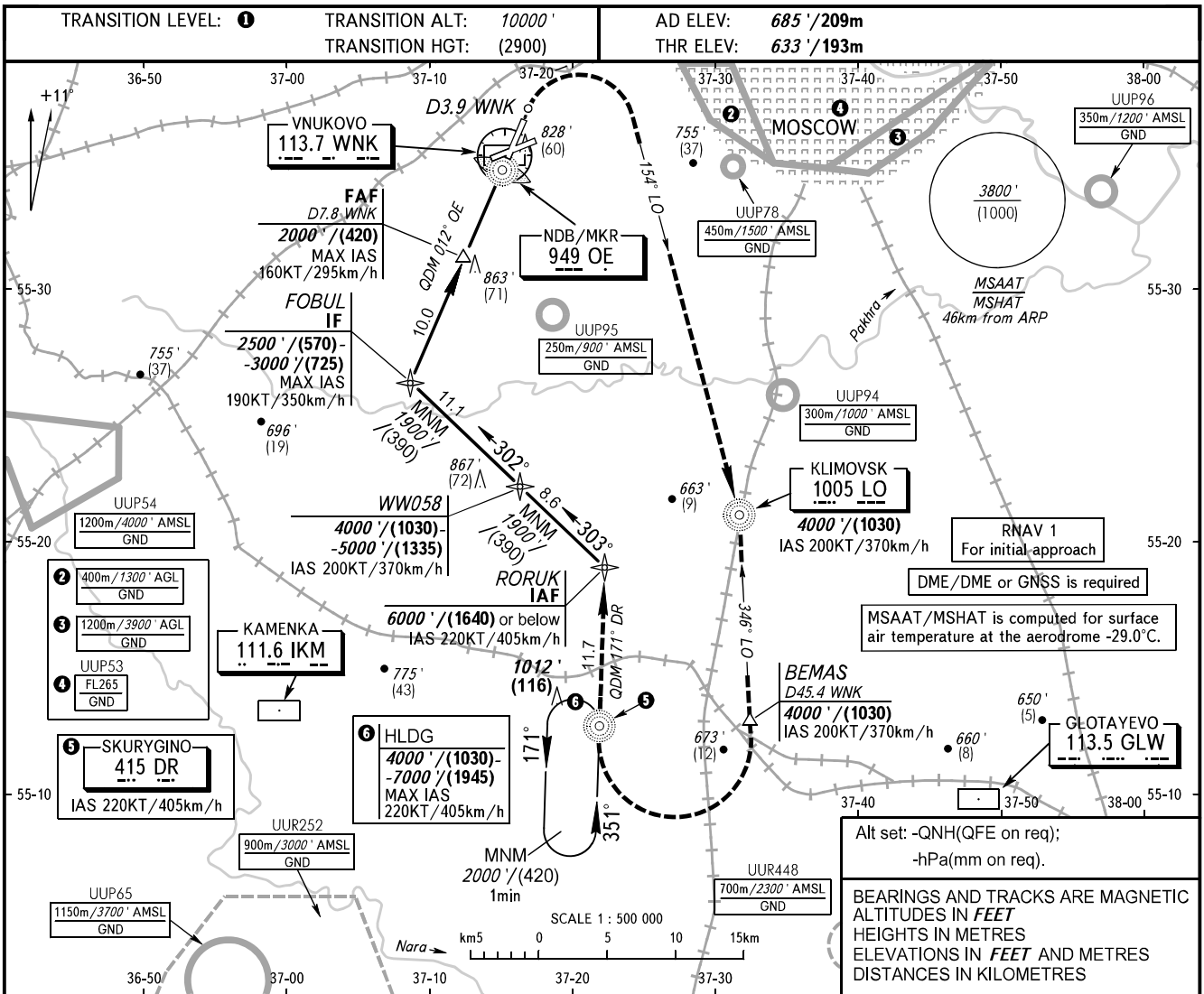


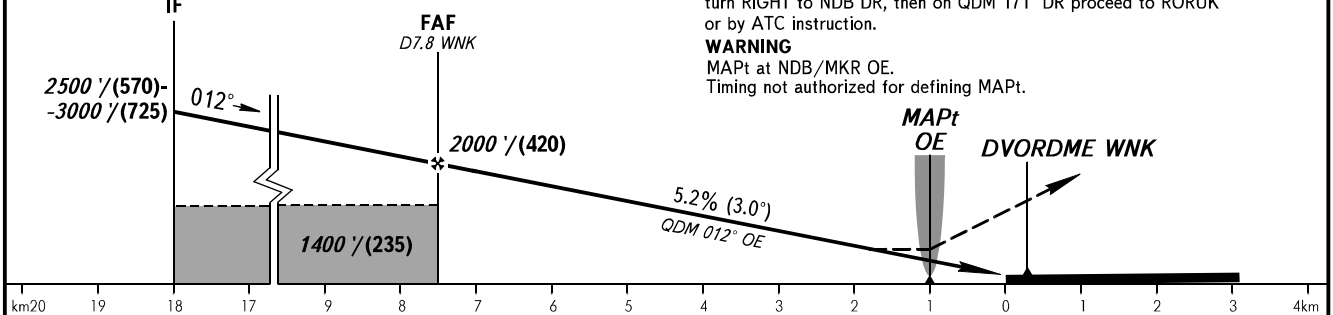
**INSTRUMENT
APPROACH
CHART - ICAO**

VNUKOVO TOWER **118.300**
VNUKOVO RADAR **123.400 126.000 135.900**

**MOSCOW, RUSSIA
VNUKOVO
NDB RWY 01**



| | | | |
|---------|-------------|-------------|-------------|
| DME WNK | 7.8 | 6.0 | 4.0 |
| ALT/HGT | 2000'/(420) | 1690'/(325) | 1350'/(220) |



| | | | | | | | | | | | | | |
|-------------------------|--|-------------------|-------------------|-------------------|-------------------|---|-----|-----|-----|------|------|------|------|
| OCA(H) | | A | B | C | D | 1 TRANSITION LEVEL: - FL110 when QNH is 1013 hPa (760mm mercury column) or above; - FL120 when QNH is 977 hPa (733mm mercury column) or above, but less than 1013 hPa (760mm mercury column); - FL130 when QNH is less than 977 hPa (733mm mercury column). | | | | | | | |
| Straight-in Approach | | 980' (350')/(110) | 980' (350')/(110) | 980' (350')/(110) | 980' (350')/(110) | | | | | | | | |
| | | | | | | | | | | | | | |
| GROUND SPEED | | km/h | 150 | 180 | 210 | 240 | 270 | 300 | 330 | 360 | 390 | 420 | 450 |
| RATE OF DESCENT | | m/s | 2.2 | 2.6 | 3.0 | 3.5 | 3.9 | 4.3 | 4.8 | 5.2 | 5.6 | 6.1 | 6.5 |
| RATE OF DESCENT | | ft/min | 427 | 512 | 597 | 682 | 768 | 853 | 938 | 1024 | 1109 | 1194 | 1280 |