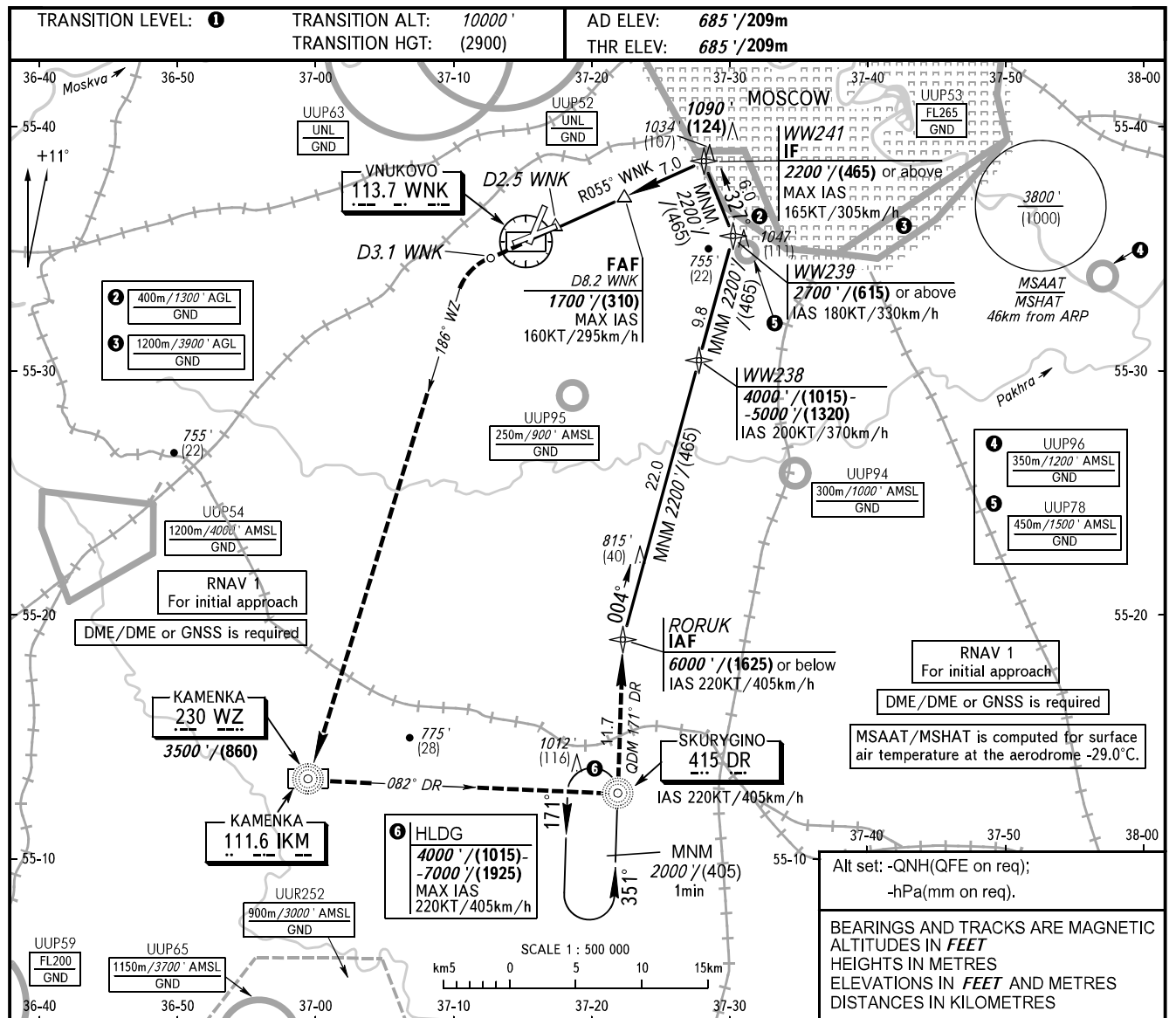


**INSTRUMENT
APPROACH
CHART - ICAO**

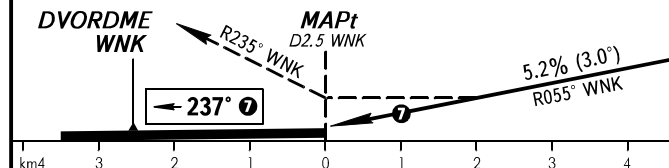
VNUKOVO TOWER	118.300
VNUKOVO RADAR	123.400 126.000 135.900

MOSCOW, RUSSIA
VNUKOVO
DVOR RWY 24



MISSED APPROACH
Climb straight ahead to D3.1 WNK, turn LEFT onto QDM 186° WZ to NDB WZ, intercept QDM 082° DR to NDB DR, turn LEFT onto QDM 171° DR and proceed to RORUK or by ATC instruction.

WARNING:
1. Final approach track is offset by 2° from the RWY centre line.
2. MAPt at D2.5 WNK. Timing not authorized for defining MAPt.



DME WNK	6.0	8.0	8.2	WW241 IF
ALT/HGT	1330'/(200)	1670'/(305)	1700'/(310)	

OCA(H)	A	B	C	D
Straight-in	1060' (380')/(115)	1060' (380')/(115)	1060' (380')/(115)	1060' (380')/(115)
Approach				

1 TRANSITION LEVEL:
- FL 110 when QNH is 1013 hPa (760mm mercury column) or above;
- FL 120 when QNH is 977 hPa (733mm mercury column) or above, but less than 1013 hPa (760mm mercury column);
- FL 130 when QNH is less than 977 hPa (733mm mercury column).

GROUND SPEED	km/h	150	180	210	240	270	300	330	360	390	420	450
RATE OF DESCENT	m/s	2.2	2.6	3.0	3.5	3.9	4.3	4.8	5.2	5.6	6.1	6.5
RATE OF DESCENT	ft/min	427	512	597	682	768	853	938	1024	1109	1194	1280