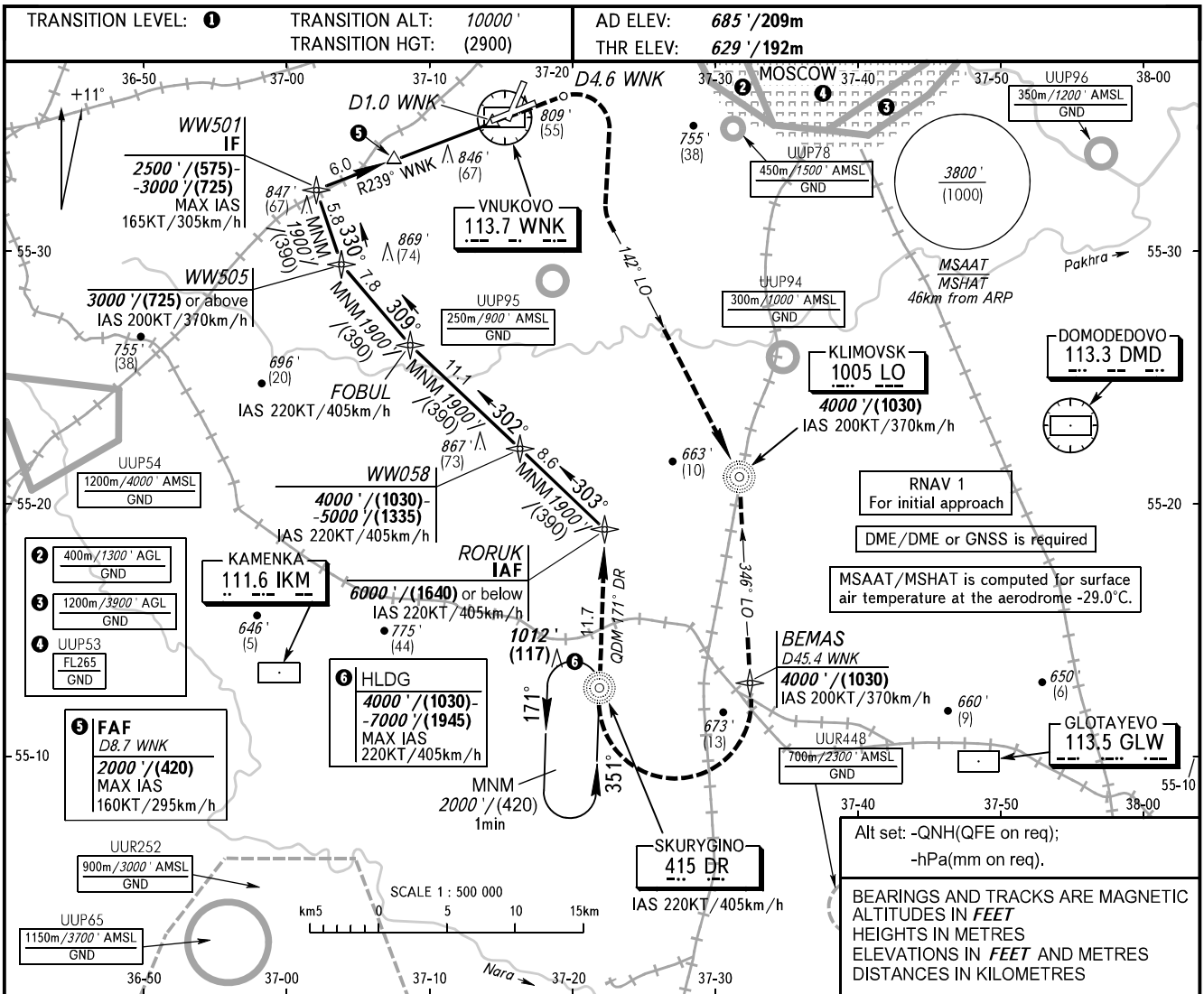


**INSTRUMENT  
APPROACH  
CHART - ICAO**

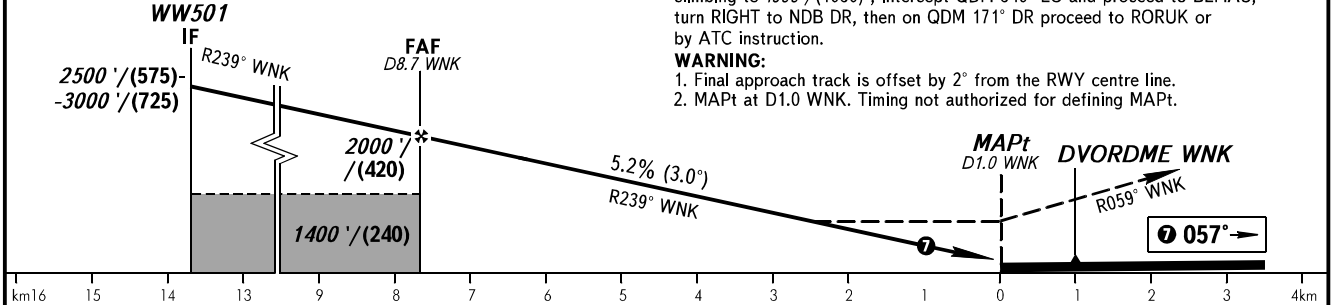
VNUKOVO TOWER **118.300**  
VNUKOVO RADAR **123.400 126.000 135.900**

**MOSCOW, RUSSIA**  
VNUKOVO  
DVOR RWY 06



DME WNK	7.0	6.0	4.0
ALT/HGT	1700'/(330)	1540'/(280)	1200'/(175)

**MISSED APPROACH**  
Climb straight ahead to D4.6° WNK, turn RIGHT onto QDM 142° LO to NDB LO climbing to 4000'/(1030), intercept QDM 346° LO and proceed to BEMAS, turn RIGHT to NDB DR, then on QDM 171° DR proceed to RORUK or by ATC instruction.  
**WARNING:**  
1. Final approach track is offset by 2° from the RWY centre line.  
2. MAPt at D1.0 WNK. Timing not authorized for defining MAPt.



OCA(H)	A	B	C	D
Straight-in	1100' (470')/(145)	1100' (470')/(145)	1100' (470')/(145)	1100' (470')/(145)
Approach				

**1** TRANSITION LEVEL:  
- FL110 when QNH is 1013 hPa (760mm mercury column) or above;  
- FL120 when QNH is 977 hPa (733mm mercury column) or above, but less than 1013 hPa (760mm mercury column);  
- FL130 when QNH is less than 977 hPa (733mm mercury column).

GROUND SPEED	km/h	150	180	210	240	270	300	330	360	390	420	450
RATE OF DESCENT	m/s	2.2	2.6	3.0	3.5	3.9	4.3	4.8	5.2	5.6	6.1	6.5
RATE OF DESCENT	ft/min	427	512	597	682	768	853	938	1024	1109	1194	1280