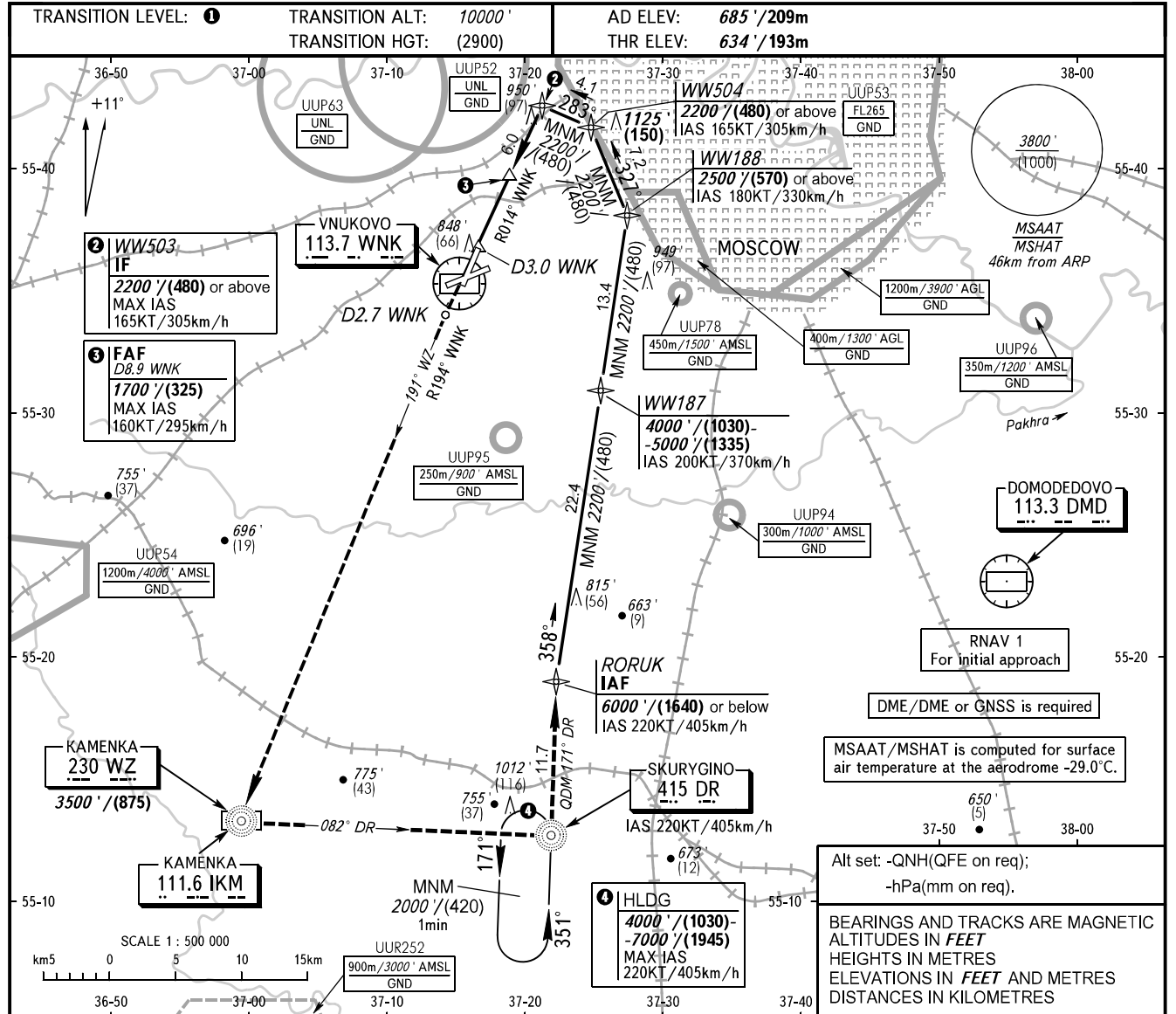


**INSTRUMENT
APPROACH
CHART - ICAO**

VNUKOVO TOWER	118.300
VNUKOVO RADAR	123.400 126.000 135.900

**MOSCOW, RUSSIA
VNUKOVO
DVOR RWY 19**



MISSED APPROACH
Climb straight ahead to D2.7 WNK, turn LEFT onto QDM 191° WZ to NDB WZ, intercept QDM 082° DR to NDB DR, turn LEFT onto QDM 171° DR and proceed to RORUK or by ATC instruction.

WARNING:
1. Final approach track is offset by 2° from the RWY centre line.
2. MAPt at D3.0 WNK. Timing not authorized for defining MAPt.

DME WNK	6.0	8.0	8.9	WW503 IF
ALT/HGT	1200'/(175)	1540'/(280)	1700'/(325)	

FAF D8.9 WNK 1700'/(325)
R014° WNK 2200'/(480) or above
DVORDME WNK 192°
MAPt D3.0 WNK 1500'/(265)
5.2% (3.0°) R014° WNK

OCA(H)	A	B	C	D	1 TRANSITION LEVEL: - FL 110 when QNH is 1013 hPa (760mm mercury column) or above; - FL 120 when QNH is 977 hPa (733mm mercury column) or above, but less than 1013 hPa (760mm mercury column); - FL 130 when QNH is less than 977 hPa (733mm mercury column).								
Straight-in	1120' (480')/(150)	1120' (480')/(150)	1120' (480')/(150)	1120' (480')/(150)									
Approach													
GROUND SPEED	km/h	150	180	210	240	270	300	330	360	390	420	450	
RATE OF DESCENT	m/s		2.2	2.6	3.0	3.5	3.9	4.3	4.8	5.2	5.6	6.1	6.5
RATE OF DESCENT	ft/min		427	512	597	682	768	853	938	1024	1109	1194	1280

CHANGE: APCH PROFILE