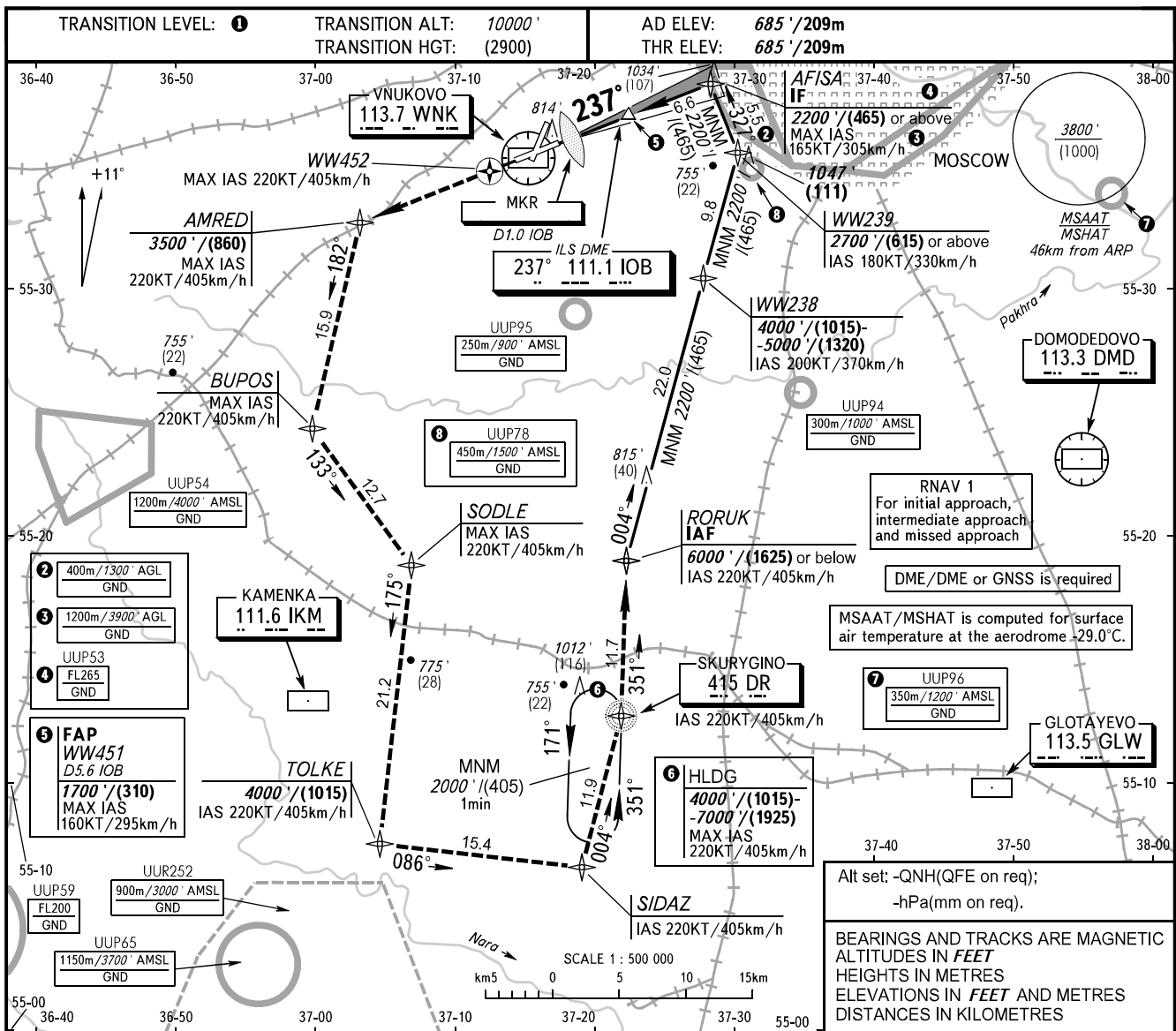


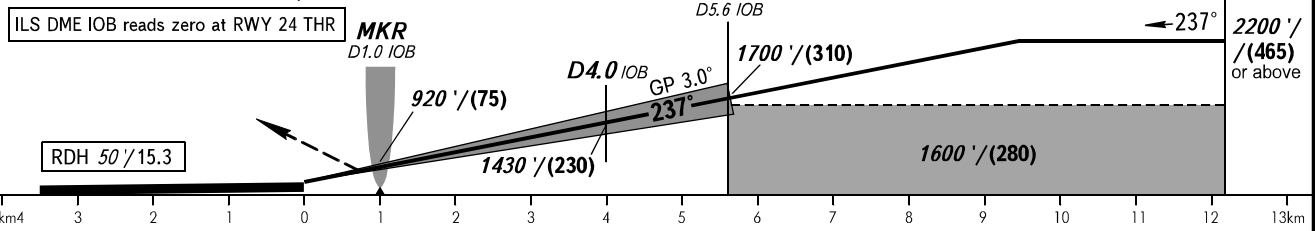
**INSTRUMENT
APPROACH
CHART - ICAO**

VNUKOVO TOWER **118.300**
VNUKOVO RADAR **123.400 126.000 135.900**

MOSCOW, RUSSIA
VNUKOVO
ILS CAT I/II/IIIA RWY 24



MISSED APPROACH
Climb straight ahead to WW452, turn LEFT to AMRED climbing to 3500' / (860), then proceed to BUPOS-SODLE-TOLKE-SIDAZ-NDB DR-RORUK or by ATC instruction.



OCA(H)		A	B	C	D										
Straight-in	CAT I	885' (200') / (60)	885' (200') / (60)	885' (200') / (60)	885' (200') / (60)	1 TRANSITION LEVEL: - FL110 when QNH is 1013 hPa (760mm mercury column) or above; - FL120 when QNH is 977 hPa (733mm mercury column) or above, but less than 1013 hPa (760mm mercury column); - FL130 when QNH is less than 977 hPa (733mm mercury column).									
	CAT II	(100') / (30)	(100') / (30)	(100') / (30)	(100') / (30)										
	CAT IIIA	APPROVED													
Circling															
GROUND SPEED		km/h	150	180	210	240	270	300	330	360	390	420	450		
RATE OF DESCENT		m/s	2.2	2.6	3.0	3.5	3.9	4.3	4.8	5.2	5.6	6.1	6.5		
RATE OF DESCENT		ft/min	427	512	597	682	768	853	938	1024	1109	1194	1280		