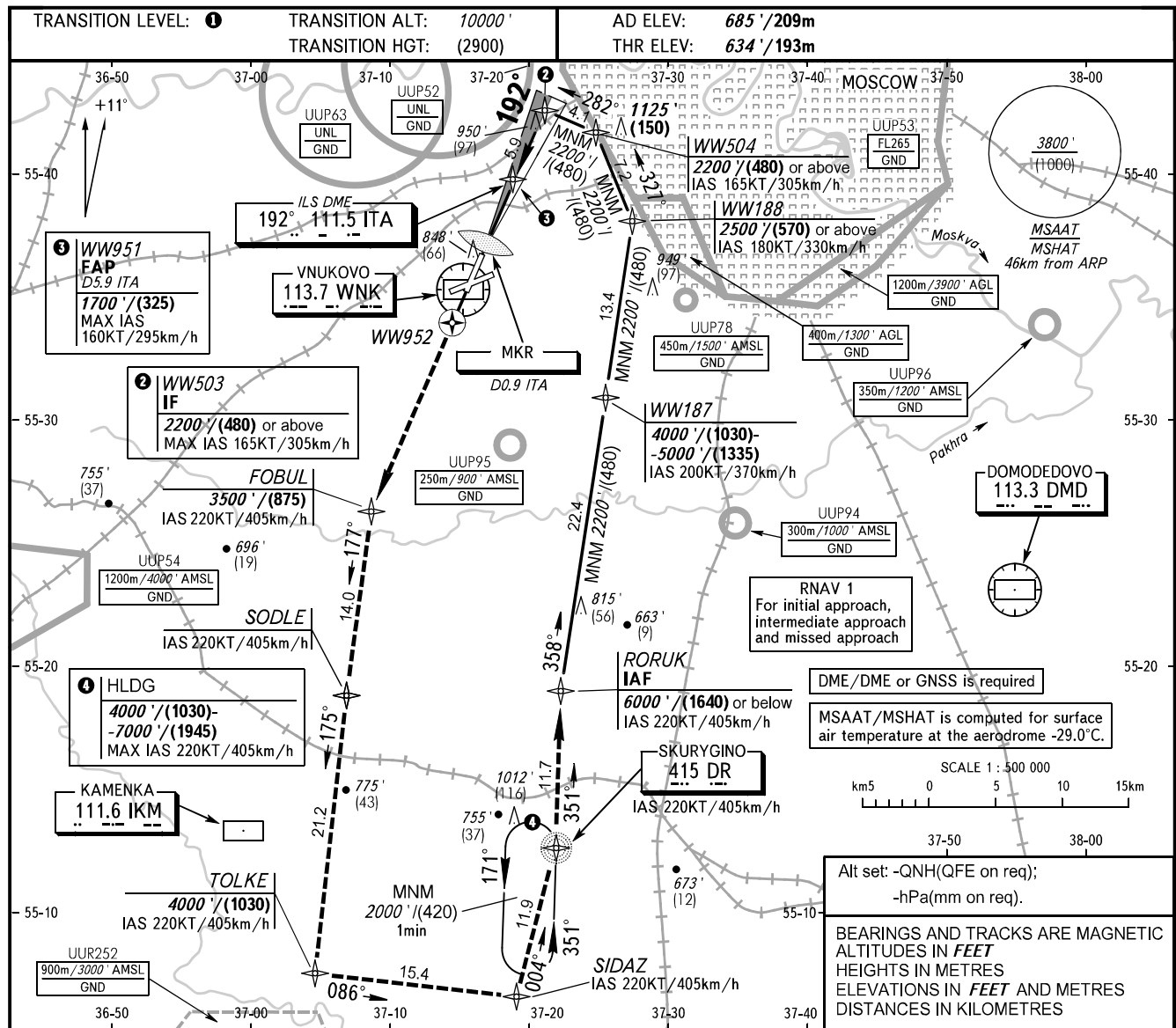


**INSTRUMENT
APPROACH
CHART - ICAO**

VNUKOVO TOWER **118.300**
VNUKOVO RADAR **123.400 126.000 135.900**

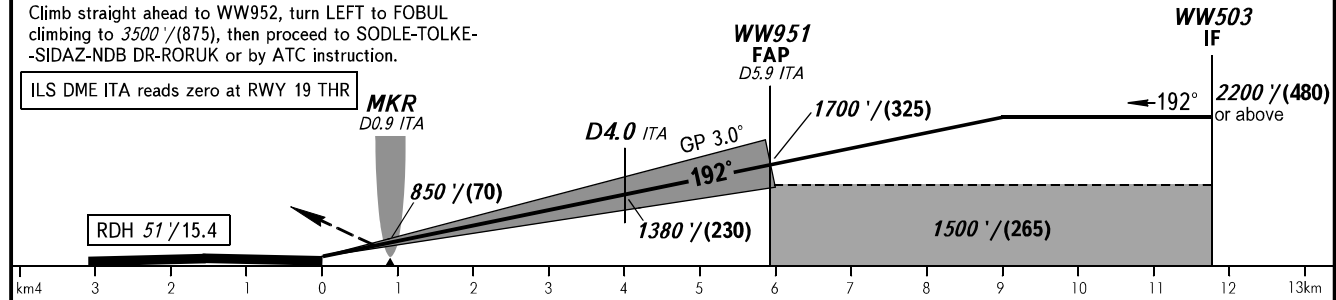
MOSCOW, RUSSIA
VNUKOVO
ILS CAT I/II RWY 19



MISSED APPROACH

Climb straight ahead to WW952, turn LEFT to FOBUL climbing to 3500'/(875), then proceed to SODLE-TOLKE-SIDAZ-NDB DR-RORUK or by ATC instruction.

ILS DME ITA reads zero at RWY 19 THR



| OCA(H) | A | B | C | D | TRANSITION LEVEL: | | | | | | | | | | |
|----------------------|--------|------------------|------------------|------------------|-------------------|---|-----|-----|------|------|------|------|--|--|--|
| Straight-in Approach | CAT I | 834' (200')/(60) | 834' (200')/(60) | 834' (200')/(60) | 834' (200')/(60) | - FL110 when QNH is 1013 hPa (760mm mercury column) or above; | | | | | | | | | |
| | CAT II | (100')/(30) | (100')/(30) | (100')/(30) | (100')/(30) | - FL120 when QNH is 977 hPa (733mm mercury column) or above, but less than 1013 hPa (760mm mercury column); | | | | | | | | | |
| | | | | | | - FL130 when QNH is less than 977 hPa (733mm mercury column). | | | | | | | | | |
| GROUND SPEED | km/h | 150 | 180 | 210 | 240 | 270 | 300 | 330 | 360 | 390 | 420 | 450 | | | |
| RATE OF DESCENT | m/s | 2.2 | 2.6 | 3.0 | 3.5 | 3.9 | 4.3 | 4.8 | 5.2 | 5.6 | 6.1 | 6.5 | | | |
| RATE OF DESCENT | ft/min | 427 | 512 | 597 | 682 | 768 | 853 | 938 | 1024 | 1109 | 1194 | 1280 | | | |