

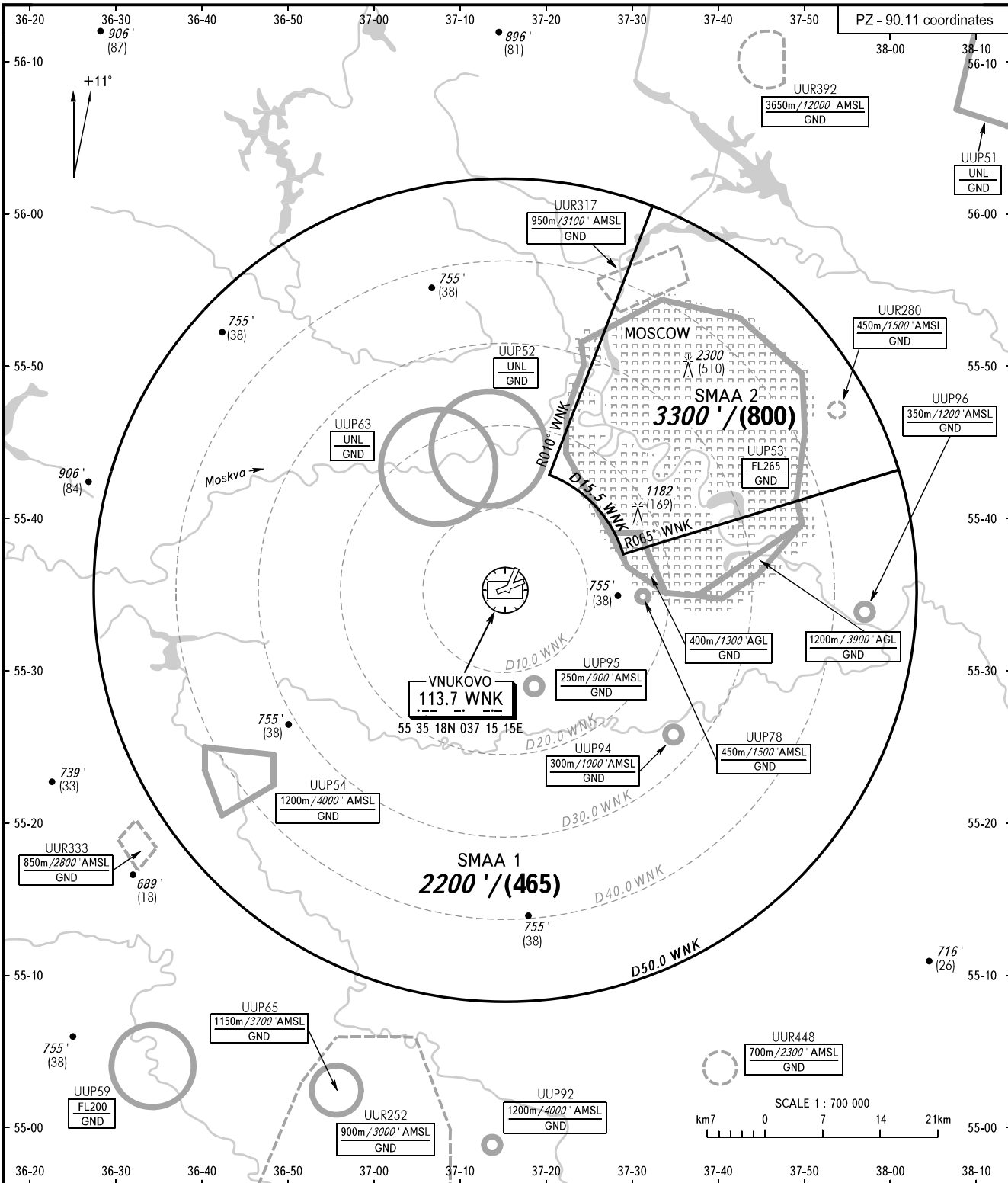
ATC SURVEILLANCE MINIMUM  
ALTITUDE CHART - ICAO

ELEV  
685'

TRANSITION ALT: 10000'  
TRANSITION HGT: (2900)

MOSCOW, RUSSIA

VNUKOVO



VNUKOVO RADAR	123.400	126.000	135.900	
MOSCOW APPROACH	127.200	128.000	134.000	131.200
	118.950	118.550	130.375	124.200

**WARNING:**

- The chart may only be used for cross-checking of altitudes assigned while the aircraft is identified under radar control.
- TEMPERATURE CORRECTION:  
The altitude value of SMAA is calculated for ISA conditions (15° C). When vectoring is executed at 0° C or below, the minimum vectoring altitudes must be corrected by altimeter temperature correction.

BEARINGS AND TRACKS ARE MAGNETIC  
ALTITUDES IN FEET  
HEIGHTS IN METRES  
ELEVATIONS IN FEET  
DISTANCES IN KILOMETRES

Alt set: -QNH(QFE on req);  
-hPa(mm on req).

CHANGE: New chart

**MOSCOW, RUSSIA**  
**VNUKOVO**

<b>SURVEILLANCE MINIMUM ALTITUDE AREAS</b>		
<b>IDENT</b>	<b>MNM ALT (FT) HGT (M)</b>	<b>LATERAL LIMITS (PZ-90.11 coordinates)</b>
SMAA 1	2200 (465)	560026N 0373229E, 554306N 0372033E, then clockwise by arc of a circle radius of 15.5 KM centred at 553518N 0371515E to 553718N 0372935E, 554140N 0380133E, then clockwise by arc of a circle radius of 50 KM centred at 553518N 0371515E to 560026N 0373229E.
SMAA 2	3300 (800)	554306N 0372033E, 560026N 0373229E, then clockwise by arc of a circle radius of 50 KM centred at 553518N 0371515E to 554140N 0380133E, 553718N 0372935E, then anticlockwise by arc of a circle radius of 15.5 KM centred at 553518N 0371515E to 554306N 0372033E.