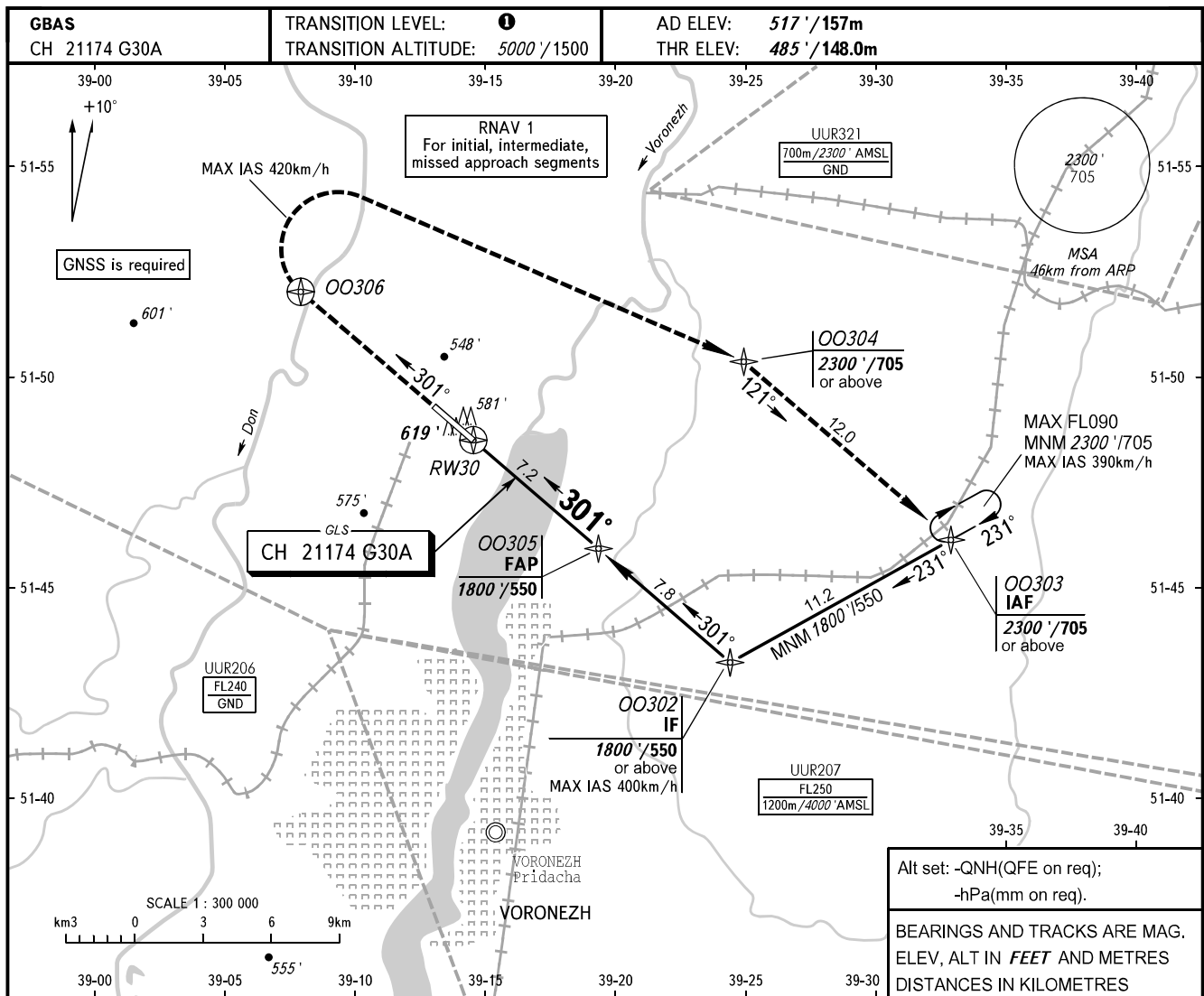


**INSTRUMENT
APPROACH
CHART - ICAO**

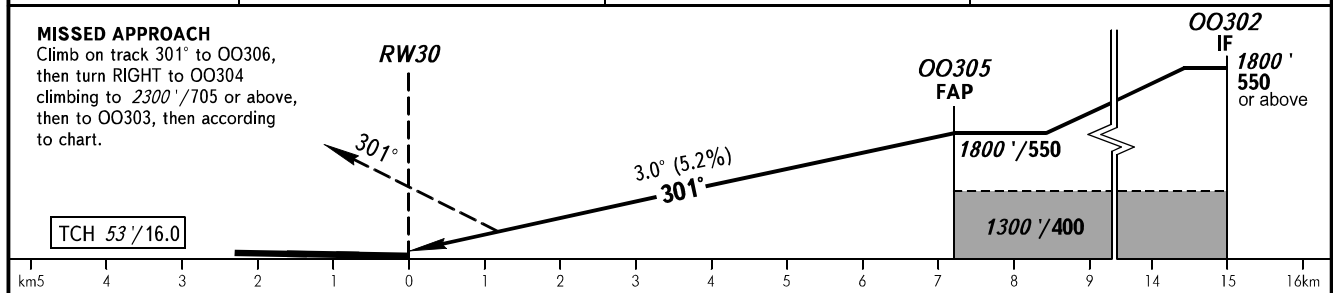
**VORONEZH, RUSSIA
CHERTOVITSKOYE
GLS RWY 30**

TOWER 118.300



Alt set: -QNH(QFE on req);
-hPa(mm on req).
BEARINGS AND TRACKS ARE MAG.
ELEV, ALT IN FEET AND METRES
DISTANCES IN KILOMETRES

DIST to RW30	2.0	4.0	6.0
ALTITUDE	890 / 272	1230 / 375	1570 / 479



OCA(H)	A	B	C	D								
Straight-in	2.5%* 748 (263)/(81)	761 (271)/(83)	769 (284)/(87)	779 (294)/(90)								
Approach	4.0%* 689 (204)/(63)	702 (217)/(67)	710 (225)/(69)	720 (235)/(72)								
Circling	1000 (478)/(150)	1010 (493)/(155)	1130 (606)/(185)	1210 (689)/(215)								
GROUND SPEED	km/h	150	180	210	240	270	300	330	360	390	420	450
RATE OF DESCENT	m/s	2.2	2.6	3.0	3.5	3.9	4.3	4.8	5.2	5.6	6.1	6.5
	ft/min	427	512	597	682	768	853	938	1024	1109	1194	1280

1 TRANSITION LEVEL:
- FL060 when QNH is 1013 hPa (760mm mercury column) or above;
- FL070 when QNH is 977 hPa (733mm mercury column) or above, but less than 1013 hPa (760mm mercury column);
- FL080 when QNH is less than 977 hPa (733mm mercury column).
*MNM climb gradient for missed APCH.